

The background of the slide is a satellite map of the Fraser River delta region in British Columbia, Canada. The map shows the river's complex network of channels and wetlands, with a mix of green vegetation, brownish soil, and urban areas. The ocean is visible on the left side.

# Regional Shoreline Adaptation Plan

An implementing project of **BAY ADAPT**

## The Regional Shoreline Adaptation Plan

Bay Plan Amendment 1-24  
Proposed Vote on Adoption

December 5, 2024

# Presentation Overview



- **BCDC and the Regional Shoreline Adaptation Plan**
- **Summary of Comment Themes and Key Revisions**
- **Staff Recommendation**

# Revised RSAP

- RSAP achieves and strengthens fundamental outcomes
- Preserves important environmental protections and resiliency
- Revisions provide clarity, usability, and flexibility for the Bay's diverse shoreline communities



Regional Shoreline  
Adaptation Plan  
An implementing project of **BAY ADAPT**



# Public Comments

- Total of 305 public comments
- Three areas of focus:
  1. **Guidelines Requirements and Planning Process**
  2. **Topic Areas**
  3. **Technical and Formatting Changes**

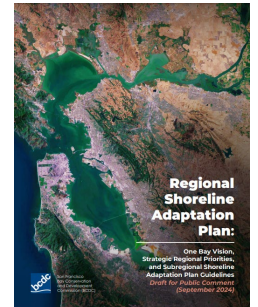
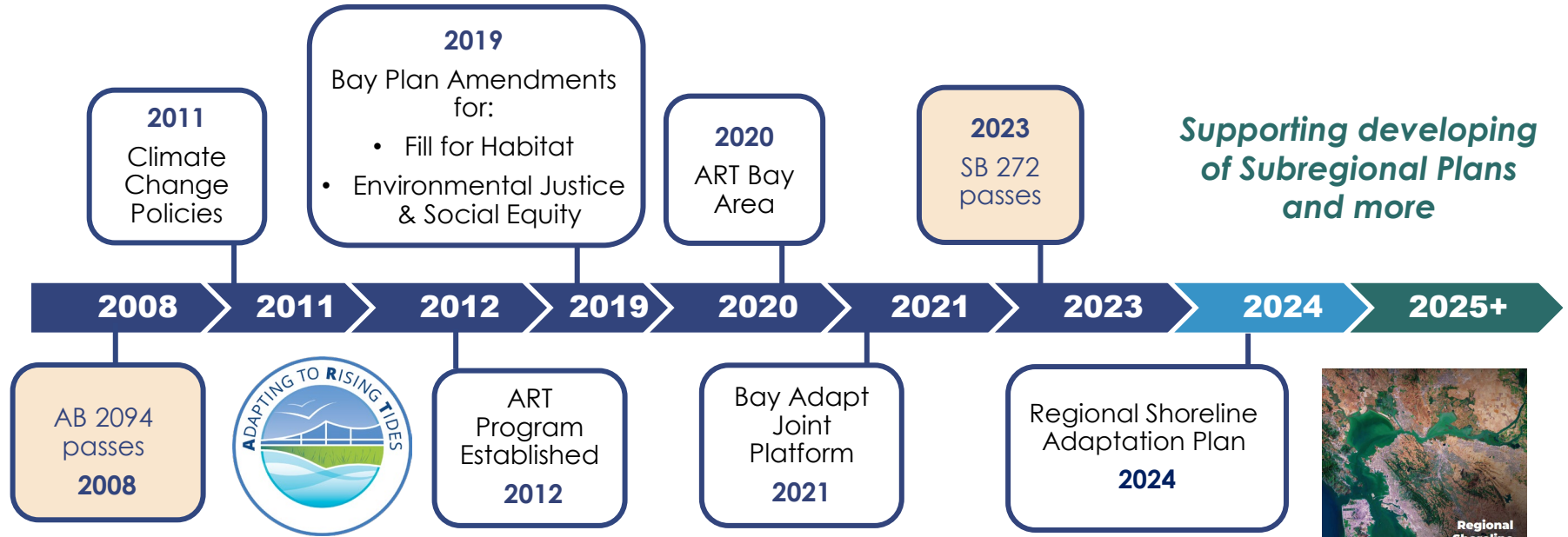
Photo courtesy of California King Tides Project.

Photo by SF Baykeeper, Cole Robb  
Most, and LightHawk.

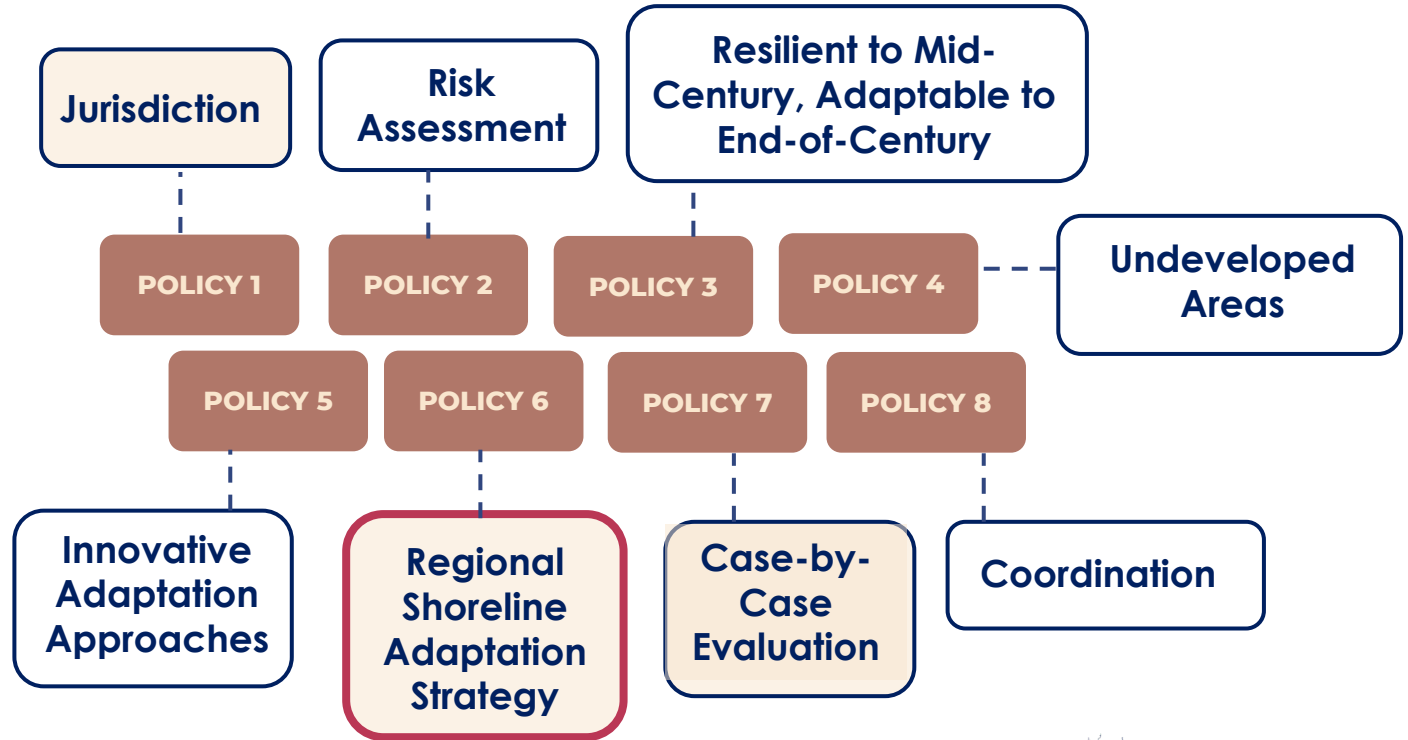
# BCDC and the Regional Shoreline Adaptation Plan



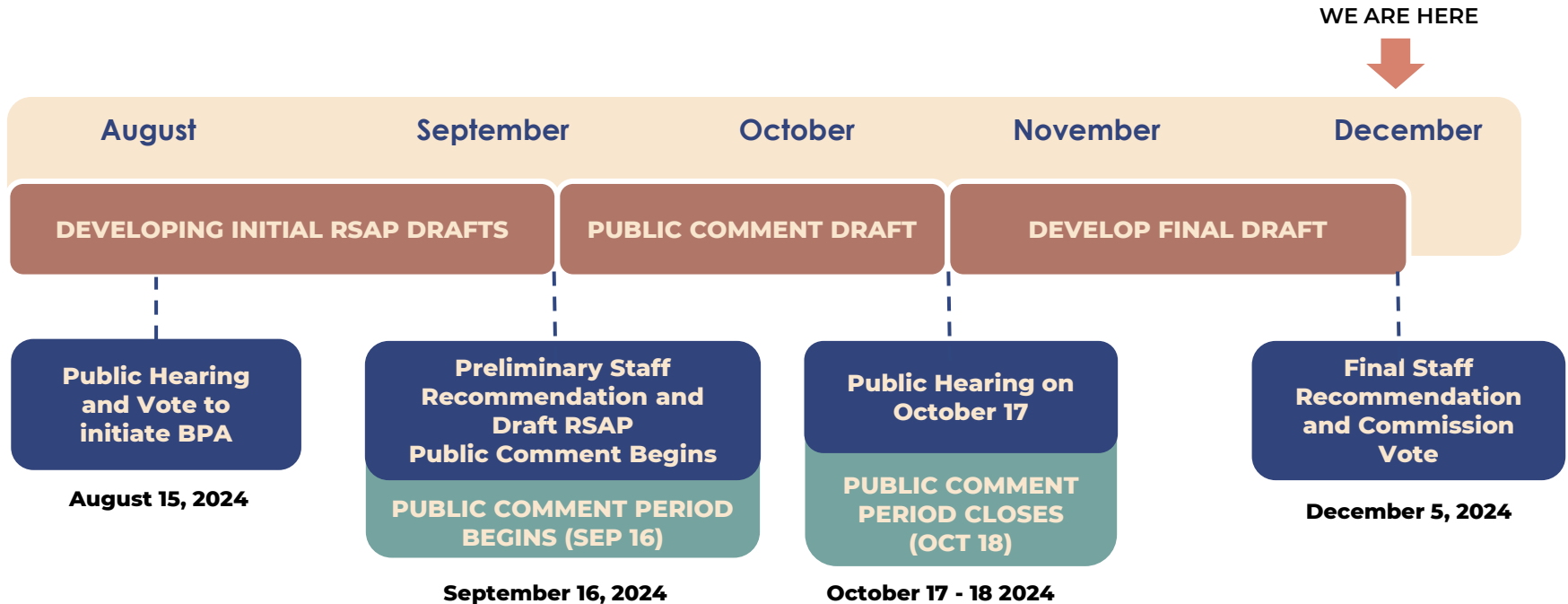
# Climate Adaptation at BCDC



# Bay Plan Climate Change Policies (2011)



# Regional Shoreline Adaptation Plan Timeline





# What is the Regional Shoreline Adaptation Plan? (RSAP)

A region-wide plan for the Bay shoreline that guides the creation of coordinated, locally-planned sea level rise adaptation actions that work together to meet regional goals. It contains:

- ✓ One Bay Vision
- ✓ Strategic Regional Priorities
- ✓ Guidelines for Subregional Shoreline Adaptation Plans

## Regional Shoreline Adaptation Plan:

One Bay Vision,  
Strategic Regional Priorities,  
and Subregional Shoreline  
Adaptation Plan Guidelines

*DRAFT* December 2024



San Francisco  
Bay Conservation  
and Development  
Commission (BCDC)



OCEAN  
PROTECTION  
COUNCIL



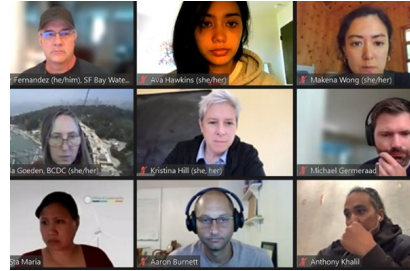
Coastal  
Conservancy



Regional Shoreline  
Adaptation Plan  
An implementing project of BAY ADAPT



# Many voices have shaped this draft



- **6** Advisory Group meetings
- **40+** Subcommittee meetings
- **6** Local Electeds Regional Task Force
- **3** Bay Adapt Implementation Coordinating Group
- **6** BCDC Commission meetings
- **6** Rising Sea Level Commissioner Working Group meetings
- **2** Design Review Board
- **2** Engineering Criteria Review Board
- **10** Community events
- **1** Online survey
- **1** Public workshop
- **4** Focus Groups
- **5** Local workshops
- **1** Practitioner workshop
- **4** Conferences
- **9-**County local elected road show
- **4+** Interagency Meetings
- **1** Tribal consultation



Bottom three photos by Karl Nielson.



# The RSAP is designed to drive effective local adaptation

- ✓ Flexible
- ✓ Aligned
- ✓ Right-Sized
- ✓ Building on Existing Efforts
- ✓ Impactful



Regional Shoreline  
Adaptation Plan  
An implementing project of BAY ADAPT



Photo by Stanislav Sedov, CC BY 2.0.

# Summary of Comment Themes and Key Revisions



Photo courtesy of California King Tides Project.

# Guidelines Requirements and Planning Process

- Streamlining of requirements and simplification of planning steps
- Use of existing plans, studies and/or providing alternative paths to comply with the RSAP Guidelines



**Regional Shoreline  
Adaptation Plan**  
An implementing project of **BAY ADAPT**





Photo courtesy of California King Tides Project.

# Guidelines Requirements and Planning Process

- Expectations for coordinating with neighboring jurisdictions, special districts and other entities
- Hierarchy of authorities
- Refinements of the Plan consultation, submittal, approval, and updates process
- Guidance for CEQA/ Environmental Review
- Adaptation pathways and guidance on selecting pathways in 2100
- Project list requirements



**Regional Shoreline Adaptation Plan**  
An implementing project of **BAY ADAPT**



# Topic Areas

- More robust requirements for nature-based solutions and habitat protections
- Linking to measurable metrics and outcomes
- Strengthening requirements regarding contamination



Regional Shoreline  
Adaptation Plan

An implementing project of BAY ADAPT

# Topic Areas

- Adding More Robust Inclusion of Tribal Engagement and Knowledge



Regional Shoreline  
Adaptation Plan  
An implementing project of BAY ADAPT



# Topic Areas

- Clarifying how to handle tradeoffs in adaptation decisions
- Regional housing needs and the role of private development in funding adaptation
- Clarifying the expected approach to economic analysis
- Additional topical edits





# Technical and Formatting Changes

- Clarifying/correcting data and science
- Local jurisdictions subject to SB 272
- RSAP grammatical, editorial, and graphics

Photo by SF Baykeeper  
Robb Most and LightHawk.



**Regional Shoreline  
Adaptation Plan**  
An implementing project of **BAY ADAPT**



# Bay Plan Climate Change findings and policies

- No changes to proposed climate change policies
- No changes to Environmental Assessment
- This does **not alter** BCDC's permitting authority

San  
Francisco  
Bay  
Plan

San Francisco Bay Conservation  
and  
Development Commission



# Future Commission Actions

- Technical assistance (TA) program
- Future updates to the RSAP
- Regional Leadership on Sea Level Rise Adaptation
- RSAP Enforceability and BCDC Authority and Jurisdiction



Regional Shoreline  
Adaptation Plan  
An implementing project of BAY ADAPT



Photo by TJ Gehling licensed  
under CC BY-NC-ND 2.0.

A wide-angle photograph of a long suspension bridge spanning a large body of water. The bridge features several large steel truss towers and a long trestle section. The water is a deep blue, and the sky is a clear, light blue with a few wispy clouds. In the foreground, there is a grassy area with some blurred plant stalks. A small boat is visible in the water near the bridge's end. The overall scene is peaceful and scenic.

Staff Recommendation

# BPA No. 1-24 Staff Recommendation

The staff recommends that the Commission adopt the attached Resolution No. 2024.05 (Appendix A) including corrections to the recommendation and resolution mailed on Wednesday, November 27, that would:

1. Adopt the Regional Shoreline Adaptation Plan as a plan addressing special needs incorporated by reference within the San Francisco Bay Plan.
2. Amend San Francisco Bay Plan Climate Change Findings C, E, O, P, R, U, and W, and establish new Climate Change Findings X, Y, and Z.
3. Amend San Francisco Bay Plan Climate Change Policies 1, 6, and 7.
4. Make necessary findings that this amendment to the San Francisco Bay Plan conforms to all applicable findings and declarations of policies in the McAteer-Petris Act.
5. Make necessary findings regarding the Environmental Assessment.