

A satellite-style map of the British Columbia coastline, showing the ocean on the left, a network of rivers and lakes in green, and land with various terrain colors (brown, tan, green) and urban areas in grey.

Regional Shoreline Adaptation Plan

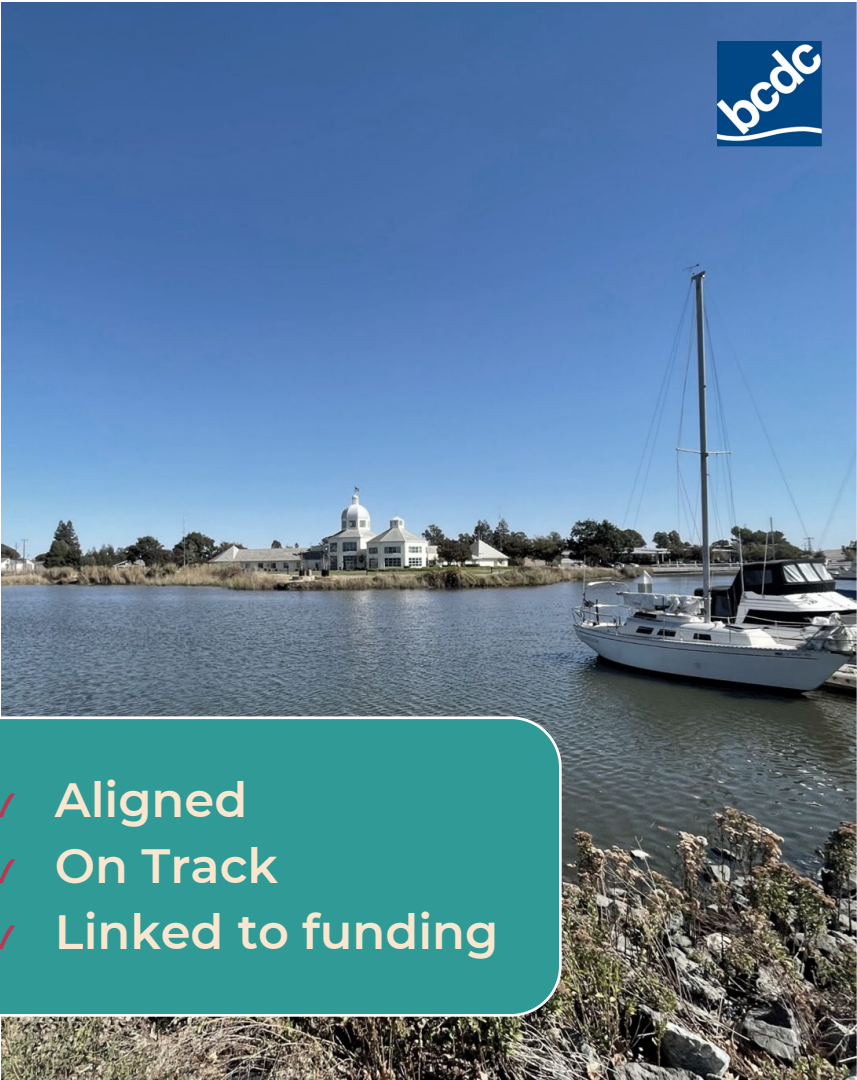
An implementing project of **BAY ADAPT**

BCDC RSL Working Group

Spring 2024

New legislation to support sea level rise adaptation (SB 272, 2023)

- Mandates local jurisdictions to develop **subregional resiliency plans** and for BCDC to develop guidelines that those plans must follow
- Requires BCDC to review - and **approve or deny** - plans based on consistency with guidelines
- **Prioritizes State funding** to create plans and for projects in approved plan jurisdictions
- Guidelines to be adopted by BCDC by **12/31/2024**

- 
- ✓ **Aligned**
 - ✓ **On Track**
 - ✓ **Linked to funding**

SB 272 Requirements

Minimum Requirements for SLR Resiliency Plans:

- Best available science
- Vulnerability assessment, including at-risk communities
- Adaptation strategies and projects
- Planning and implementation leads
- Timeline for updates
- Economic impact analysis for critical infrastructure

Our work is going above and beyond by creating the guidelines collaboratively and emphasizing equity and nature-based solutions



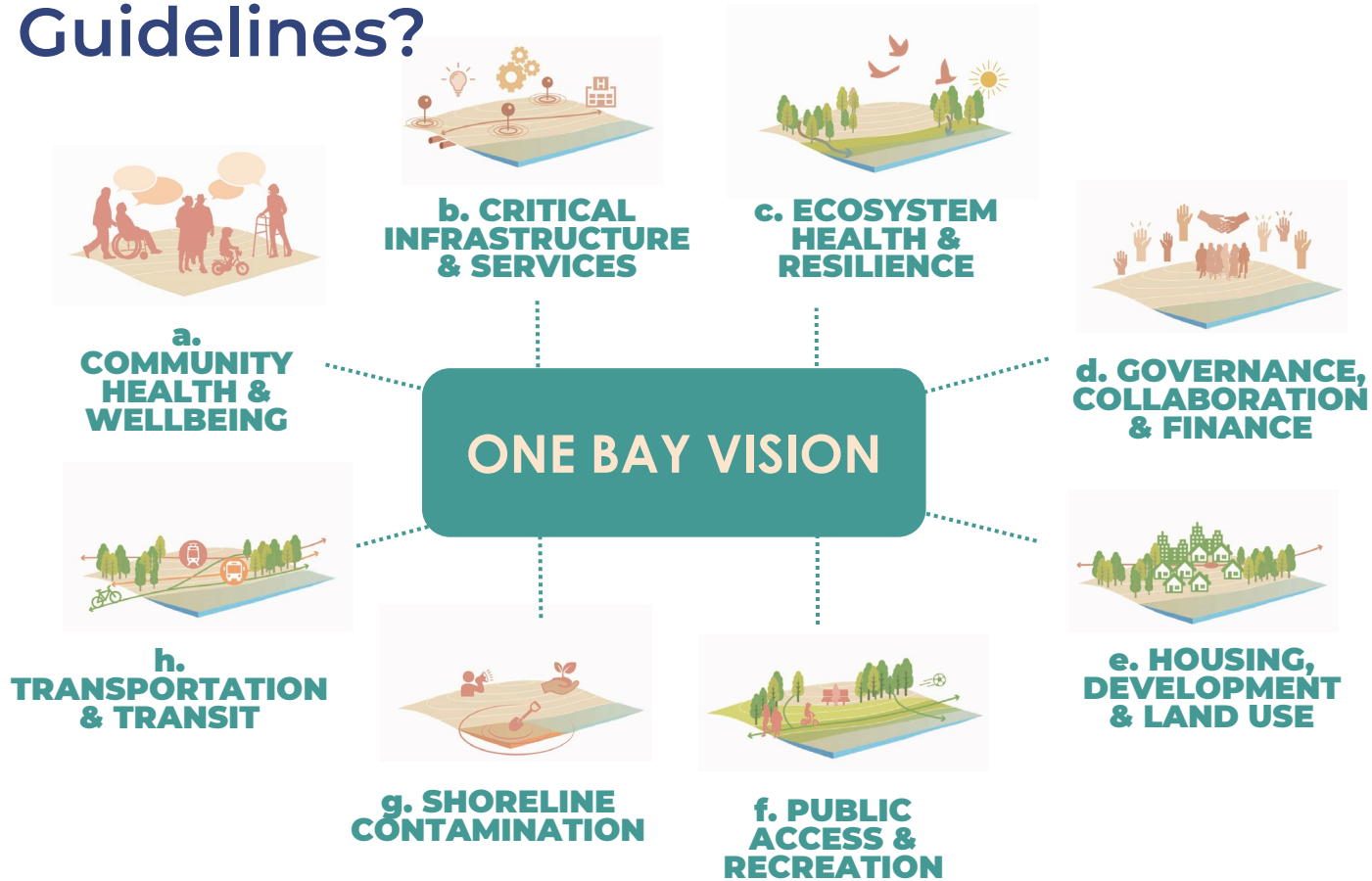
GOOD NEWS! *We've already started*

Bay Adapt and SB 272 are:

- ✓ Aligned
- ✓ On Track
- ✓ Linked to funding
 - **Planning funding** : \$95 M for local subregional plans and projects (OPC)(coming soon) + other sources
 - **Implementation funding**: State and Federal \$\$



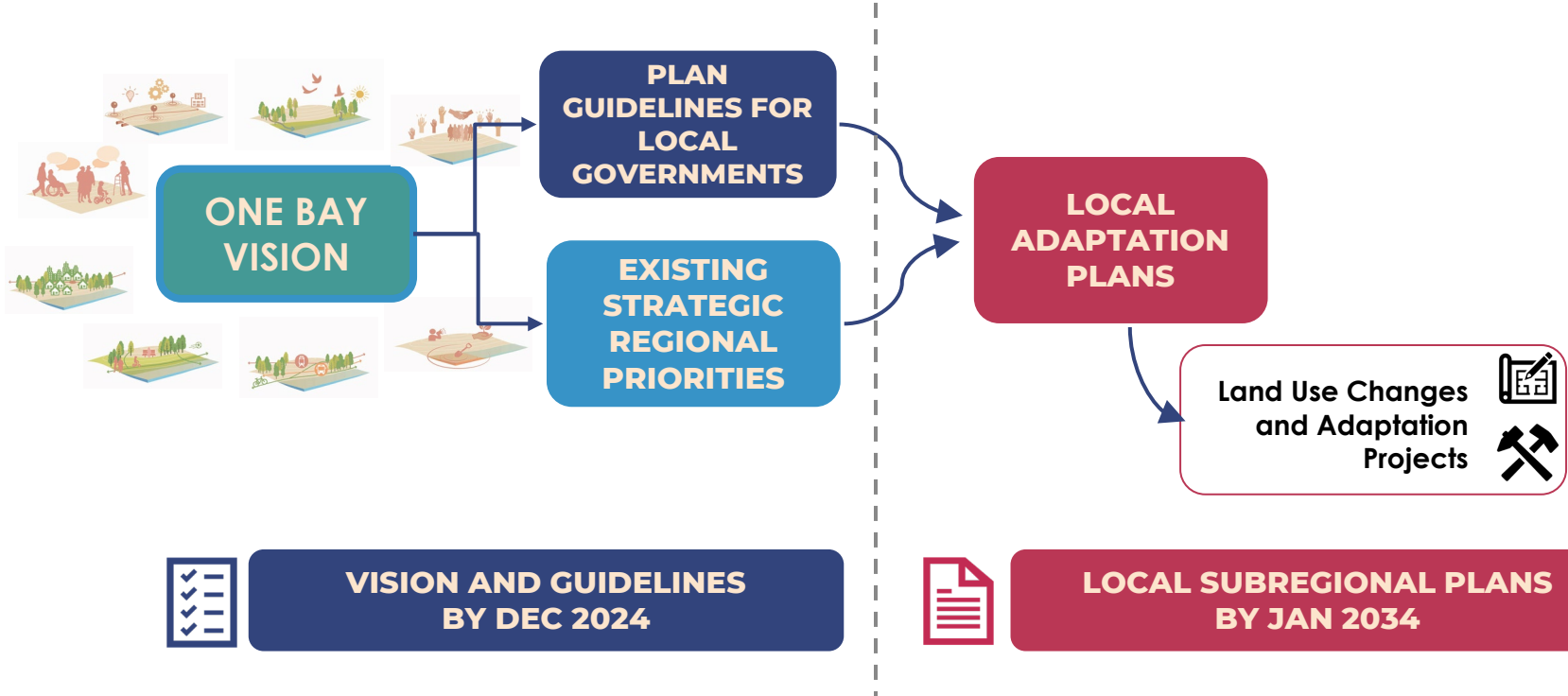
How Do We Start Developing Guidelines?



What Constitutes The Regional Shoreline Adaptation Plan?



**REGIONAL
ADAPTATION
ONLINE MAP**



**VISION AND GUIDELINES
BY DEC 2024**



**LOCAL SUBREGIONAL PLANS
BY JAN 2034**

**Land Use Changes
and Adaptation
Projects**

Where Are We Now?

WHAT IS A SUBREGIONAL PLAN?

Possible Scale and Leads

- County Plan
- Single Jurisdiction Local Plan
- Multi-Jurisdictional Local Plan
- Combo

Plan Contents

- Vulnerability Assessment
- Adaptation Pathways
- Project List
- Land Use Plan
- Implementation Plan

Submission and Adoption

- Submit to BCDC for approval
- Local adoption
- Incorporated into local plans
- Eligible for prioritized funding for projects after adoption

Working Plan Guiding Principles

- **Flexible**
 - Multiple ways to meet requirements
 - Differing definitions of “subregion” depending on existing relationships
- **Aligned**
 - Maximize existing planning processes/requirements as much as possible
 - Benefits locally, sub-regionally, and regionally
- **Right-Sized**
 - Minimum requirements to meet SB 272 and be effective in leading to outcomes
 - Avoid especially burdensome requirements
 - Recognize differing levels of capacity - don't leave lower capacity jurisdictions behind
- **Building on Existing Efforts**
 - Ability to utilize existing elements that meet the guidelines
 - Plan requirements look at what is working in existing plans rather than starting from scratch
- **Impactful**
 - Plans are adopted, codified, and contain enough information to catalyze implementation of policies and projects

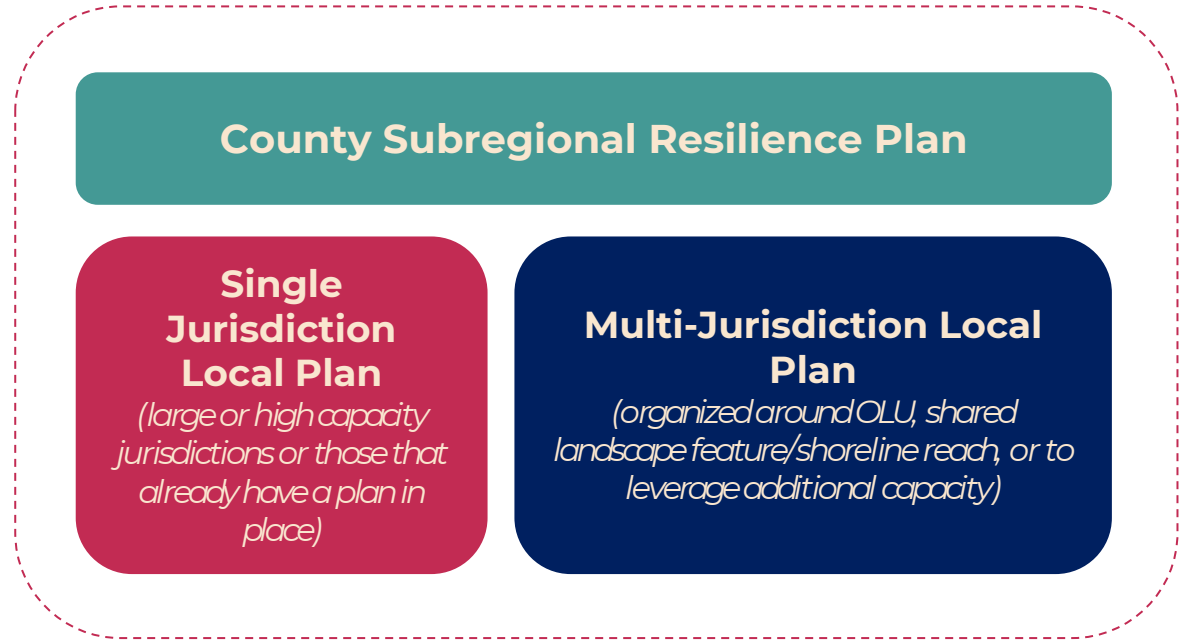
Subregional Plan Requirements Key Concepts

County Plan

- Covers unincorporated parts of the county
- Coordinates and organizes local plans

Local Plans

- Jurisdictions may submit **either** a single jurisdiction local plan or partner with their neighbors to submit a multi-jurisdiction local plan



Subregional Shoreline Resiliency Plan

Draft Plan Outline

1. Introduction and Purpose

1. Legal Context – What is SB 272
2. Goals of the RSAP and Guidelines
3. Relationship to BCDC’s Regulatory and Planning Program

2. One Bay Vision

1. Vision for a Resilient Future Shoreline
2. Community Health and Wellbeing
3. Critical Infrastructure and Services
4. Ecosystem Health & Resilience
5. Governance, Collaboration and Finance
6. Housing, Development and Land Use
7. Public Access and Recreation
8. Shoreline Contamination
9. Transportation and Transit

3. Existing Strategic Regional Priorities

4. Plan Requirements

1. Plan Basics

2. Planning Milestones

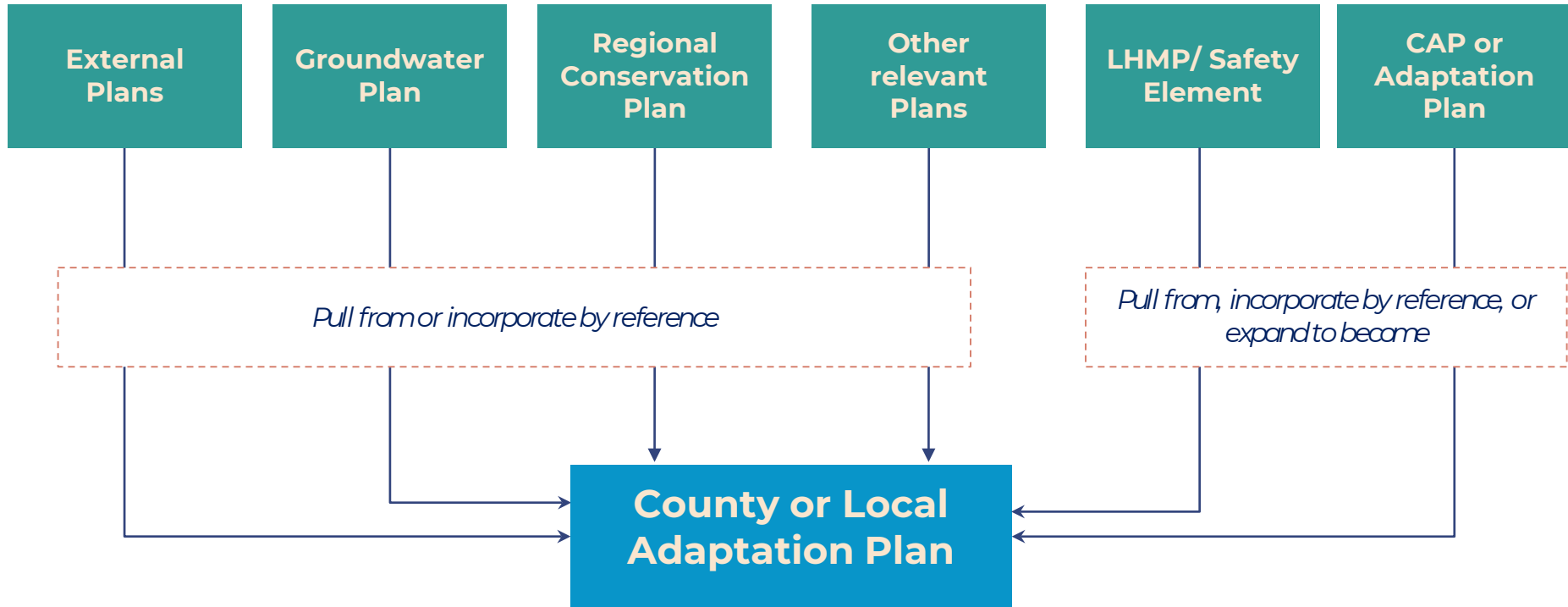
5. Plan Element Guidelines

1. Element A: Overview of Planning Process
2. Element B: Existing Conditions
3. Element C: Vulnerability Assessment
4. Element D: Adaptation Strategies and Pathways
5. Element E: Project List
6. Element F: Land Use Plan
7. Element G: Implementation Plan

6. Minimum Standards and Considerations

1. Equitable Engagement and Participation Standards
2. Time Horizons Standards
3. Flood Hazard Standards
4. Minimum Assessment Categories
5. Vulnerability Assessment Standards
6. Adaptation Strategy Standards

Align Plan Inputs – Don't Recreate the Wheel



Subregional Plans Review and Adoption Process

Plan Submission and Review by BCDC

Counties and local jurisdictions submit all plans to BCDC at the same time. Plans are reviewed separately and together.

Local Adoption

Plans are adopted locally by Boards of Supervisors and City Councils as they are approved.

Conditional Approval from BCDC

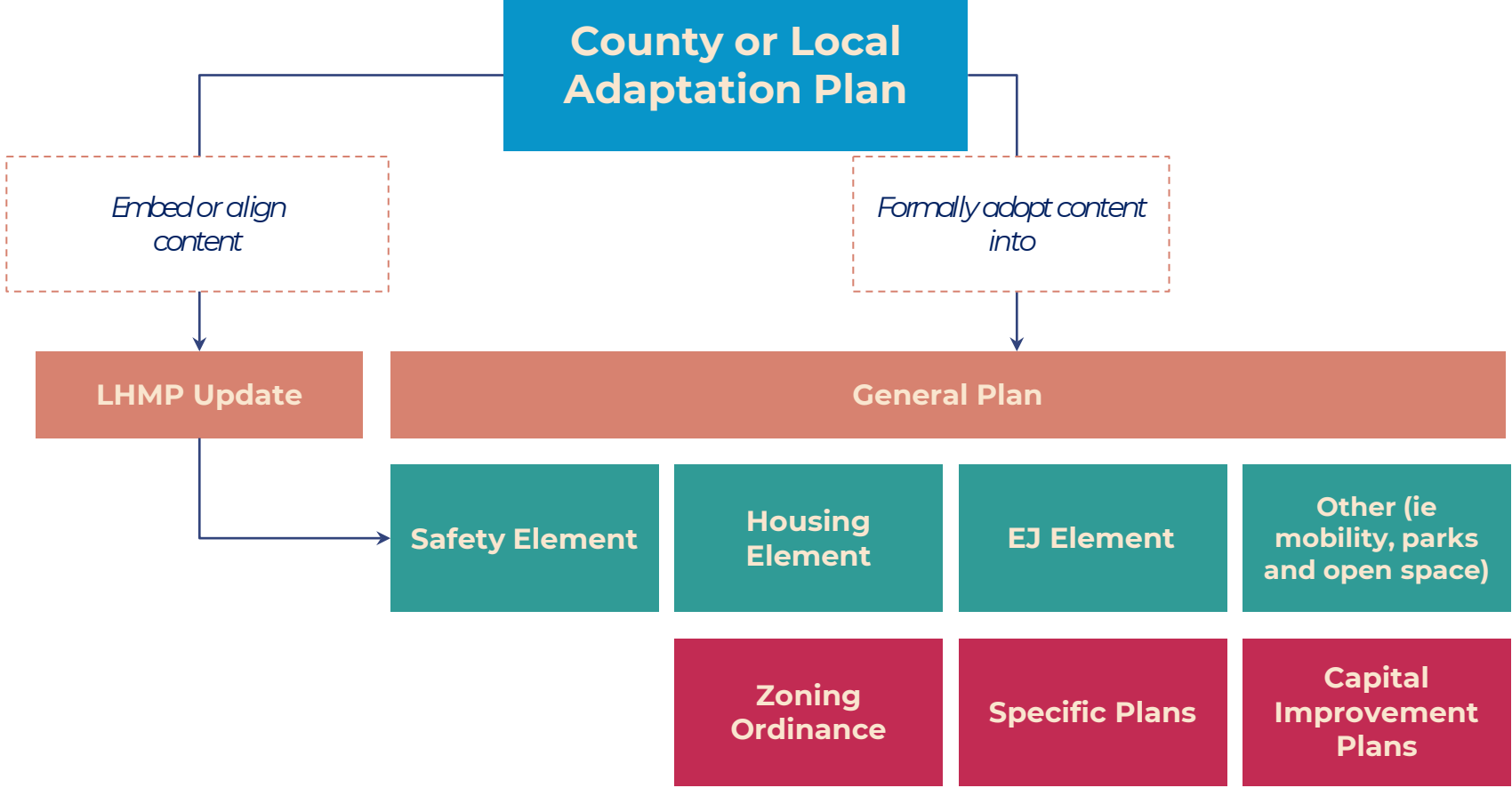
Plans are conditionally approved by BCDC. County and local plans are approved separately.

Final Approval from BCDC

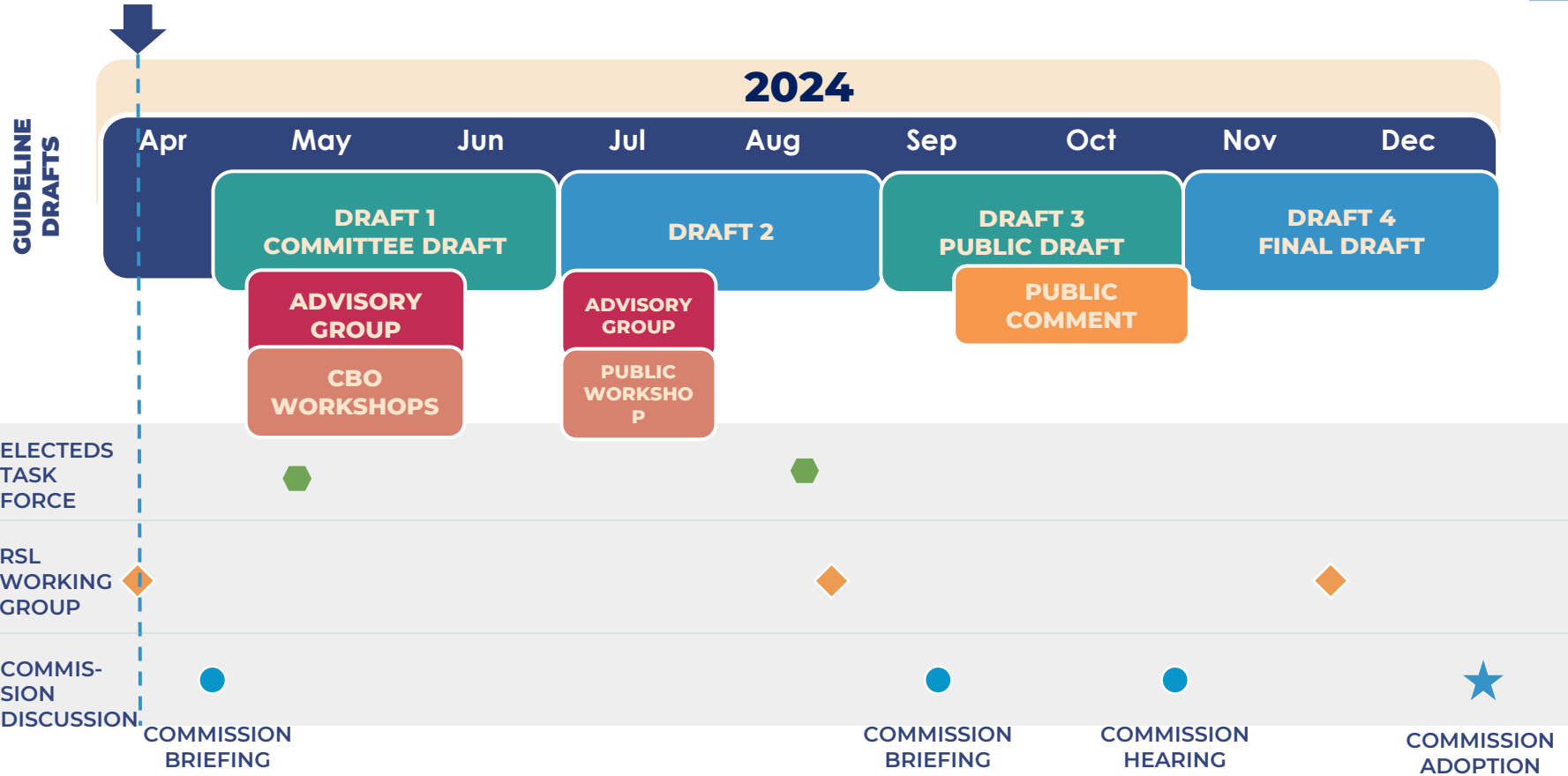
Final approval occurs when all jurisdictions submit proof of local approval to BCDC.



Codifying the Plan into Local Policies



Guidelines Review And Release Process

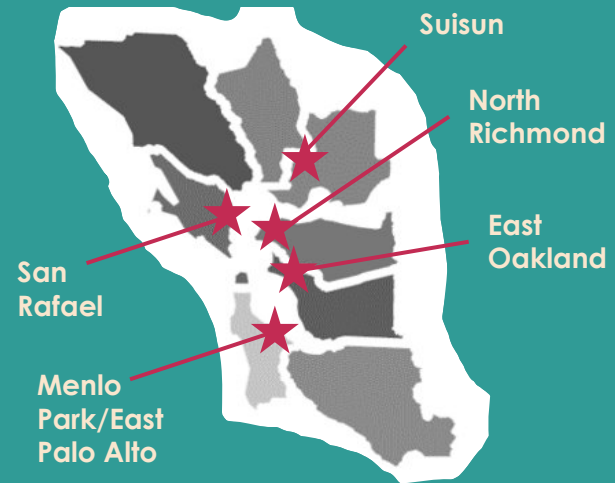


Come Join Us:

Local Workshops in May/June 2024

- Local workshops hosted **in partnership with Community-Based Organizations (CBOs)** in five vulnerable shoreline communities
- Bring together local community members **with local government** and stakeholders
- Focus on local and regional risks and opportunities to help **co-develop the new RSAP Guidelines**

Five Workshops Locations Hosted in Vulnerable Shoreline Communities



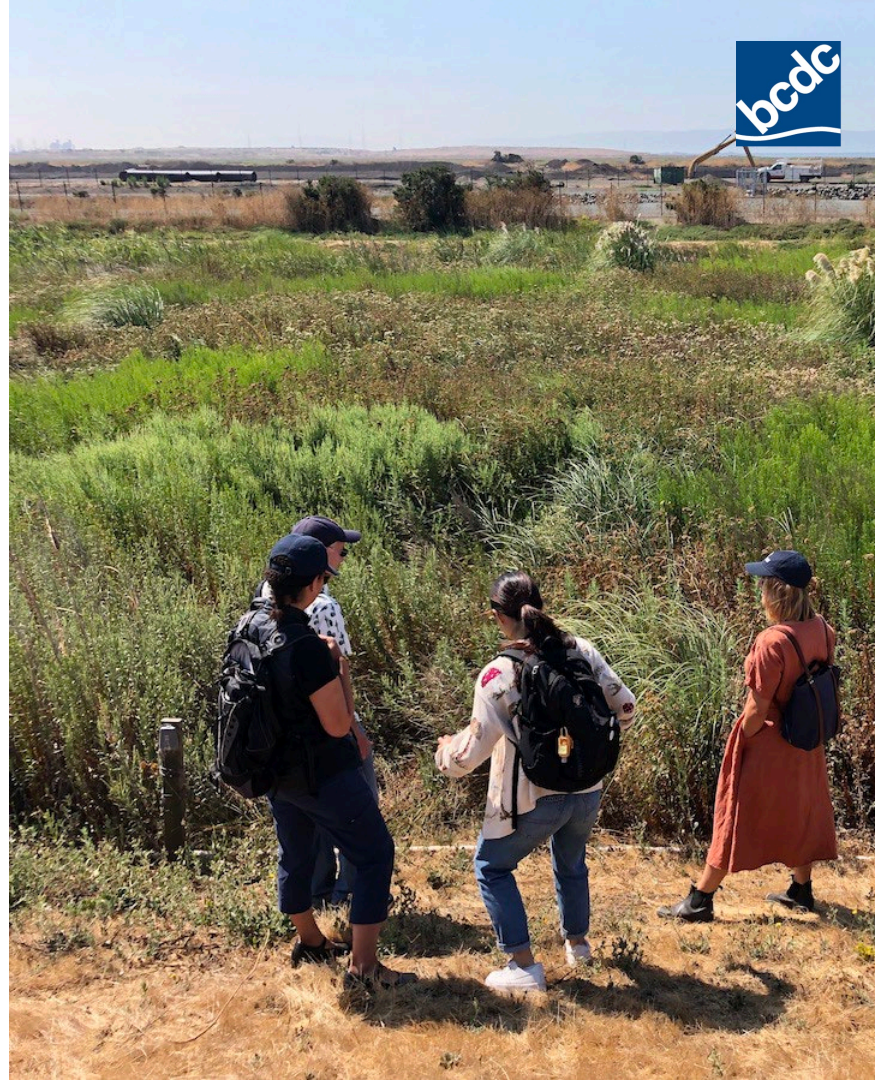
RSAP – What's Next

- We are visiting electeds from every county
- We'd like to do an "office hours" with each of you



Relationship To BCDC Plans And Policies

- SB 272 **requires** local subregional plans created through **voluntary local planning** programs to earn BCDC's approval
- BCDC needs to **permit** adaptation projects identified in the subregional plans more efficiently, more effectively, and more transparently



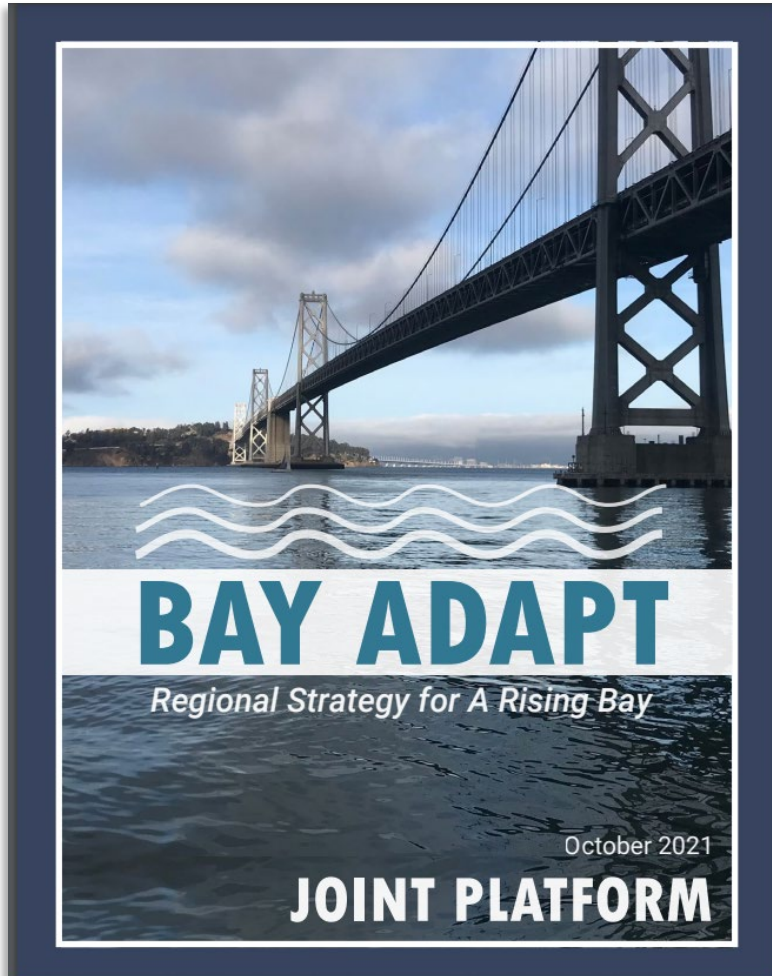
Permitting for a resilient shoreline

Rising Sea Levels Commissioner Working Group

April 4, 2024

Ethan Lavine, Assistant Regulatory Director for Climate Adaptation

Why we're doing this



“Permitting and construction should accelerate, not hold back, resilient shoreline adaptation projects that...
... value ecosystems and people,
... align with the region’s vision and funding priorities,
... and apply innovative approaches.”

Bay Adapt Joint Platform

Where we're at

Summer 2023 – Early 2024



Now



Mid-2024 and beyond



Mission-based review



Where we're at

Summer 2023 – Early 2024



Now

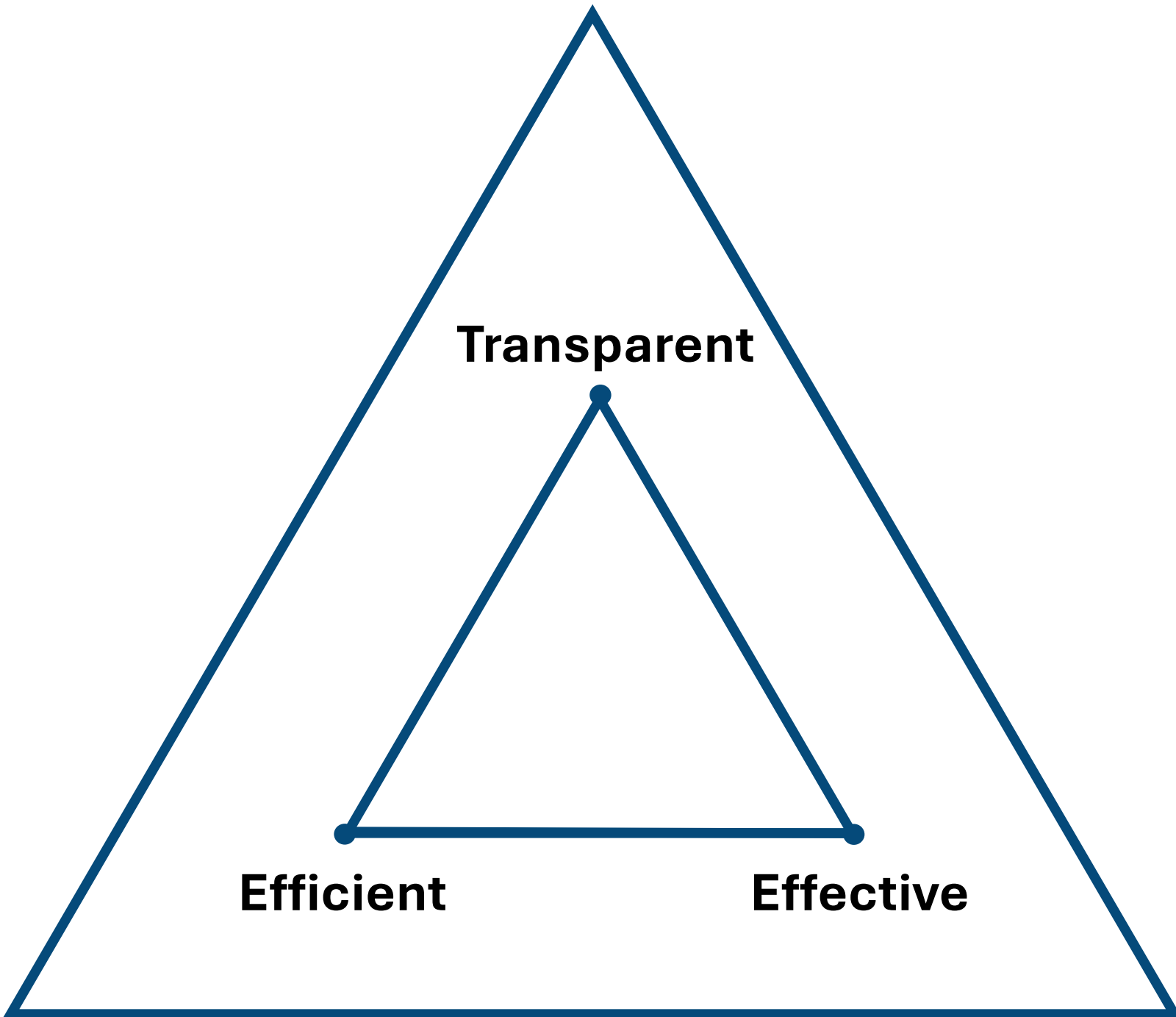


Mid-2024 and beyond



The background of the slide is a blurred, high-speed photograph of a road. The road surface is a mix of grey and blue tones, with a bright yellow light source, possibly a street lamp or a car's headlight, visible in the upper center of the frame. The overall effect is one of motion and forward progression.

***Our roadmap
for improving
the program***



Goal 1

Permitting processes become more:

- Effective
- Efficient
- Transparent

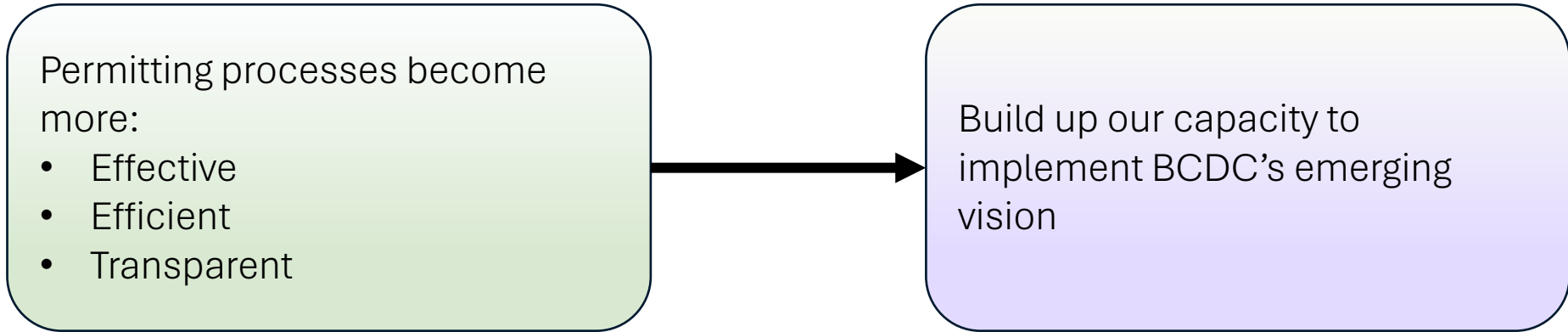
Mission-based review recommendations



Goal 2

Build up our capacity to implement BCDC's emerging vision

Goals



Objectives

1. Cut green tape

Simplify application requirements for minor activities and nature-based solutions

2. Modernize the application process

Adopt new technology, project management techniques, and process improvements

3. Use plain language

Make plans, regulations, and communications easier for everyone to understand

4. Implement regional resilience

Rethink BCDC's regulatory program in response to emerging regional resilience planning

5. Don't go it alone

Increase the level of interagency coordination on permitting for resilience

6. Support staff growth

Build a workforce that can meet BCDC's growing mandate

Goal

Permitting processes become more:

- Effective
- Efficient
- Transparent

Objective

1. Cut green tape

Simplify application requirements for minor activities and nature-based solutions

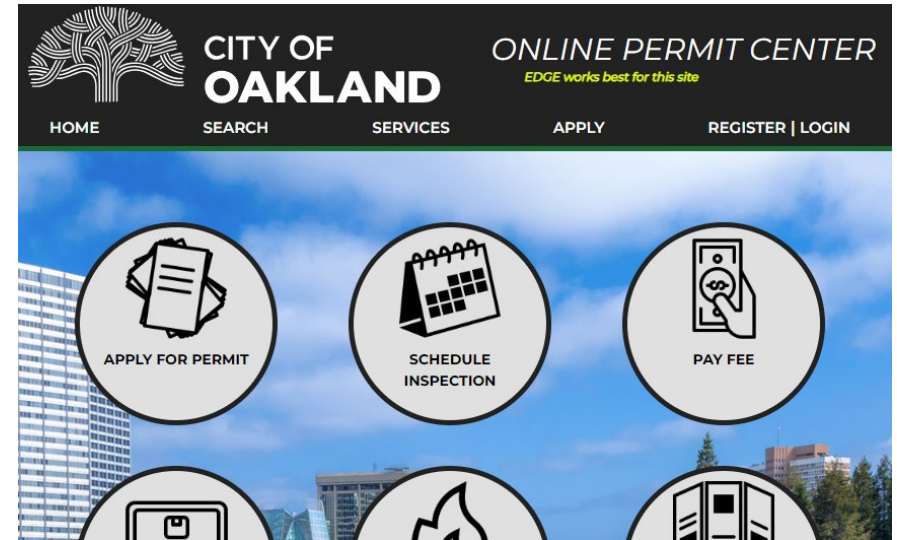
Strategies

- Improve regionwide permit program
- Develop clearer thresholds for projects requiring permits

Goal

Permitting processes become more:

- Effective
- Efficient
- Transparent



Objective

2. Modernize the application process

Adopt new technology, project management techniques, and process improvements

Strategies

- Develop a more effective pre-application process
- Adopt flexible project management techniques
- Develop an online permit application and compliance platform

Goal

Permitting processes become more:

- Effective
- Efficient
- Transparent

Objective

3. Use plain language

Make plans, regulations, and communications easier for everyone to understand

Strategies

- Adopt a plain language equity standard
- Revise BCDC's guiding documents

Goals

Permitting processes become more:

- Effective
- Efficient
- Transparent



Build up our capacity to implement BCDC's emerging vision

Objectives

1. Cut green tape

Simplify application requirements for minor activities and nature-based solutions

2. Modernize the application process

Adopt new technology, project management techniques, and process improvements

3. Use plain language

Make plans, regulations, and communications easier for everyone to understand

4. Implement regional resilience

Rethink BCDC's regulatory program in response to emerging regional resilience planning

5. Don't go it alone

Increase the level of interagency coordination on permitting for resilience

6. Support staff growth

Build a workforce that can meet BCDC's growing mandate

Goal

Build up our capacity to implement BCDC's emerging vision



Objective

4. Implement regional resilience

Rethink BCDC's regulatory program in response to emerging regional resilience planning

Strategies

- Design rules and policies to implement the regional vision
- Evaluate regulatory tools, authority, and jurisdiction required to fully meet resilience goals

Goal

Build up our capacity to implement BCDC's emerging vision

Objective

5. Don't go it alone

Increase the level of interagency coordination on permitting for resilience

Strategies

- Enhance early and ongoing interagency coordination
- Explore new models of coordination

Goal

Build up our capacity to implement BCDC's emerging vision



Objective

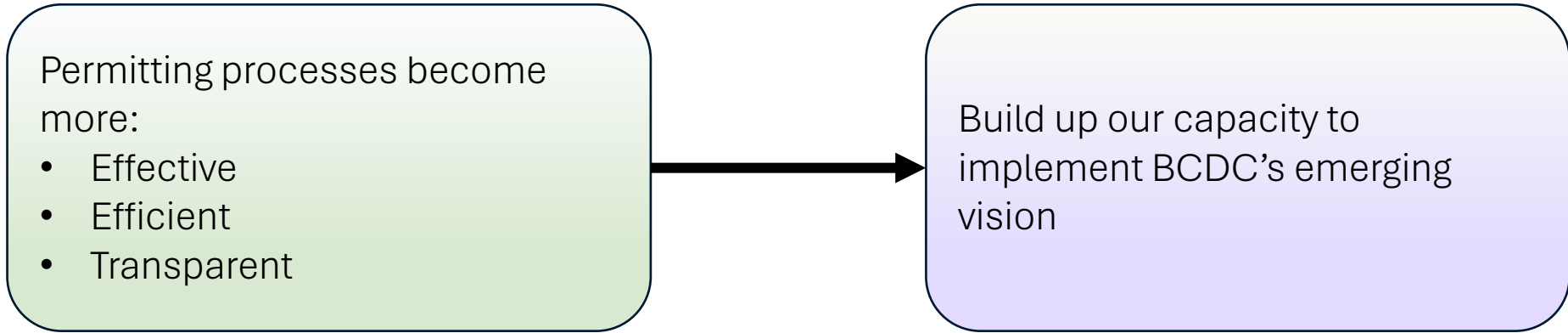
6. Support staff growth

Build a workforce that can meet BCDC's growing mandate

Strategies

- Build staff capacity
- Grow staff to meet the region's needs

Goals



Objectives

1. Cut green tape

Simplify application requirements for minor activities and nature-based solutions

2. Modernize the application process

Adopt new technology, project management techniques, and process improvements

3. Use plain language

Make plans, regulations, and communications easier for everyone to understand

4. Implement regional resilience

Rethink BCDC's regulatory program in response to emerging regional resilience planning

5. Don't go it alone

Increase the level of interagency coordination on permitting for resilience

6. Support staff growth

Build a workforce that can meet BCDC's growing mandate