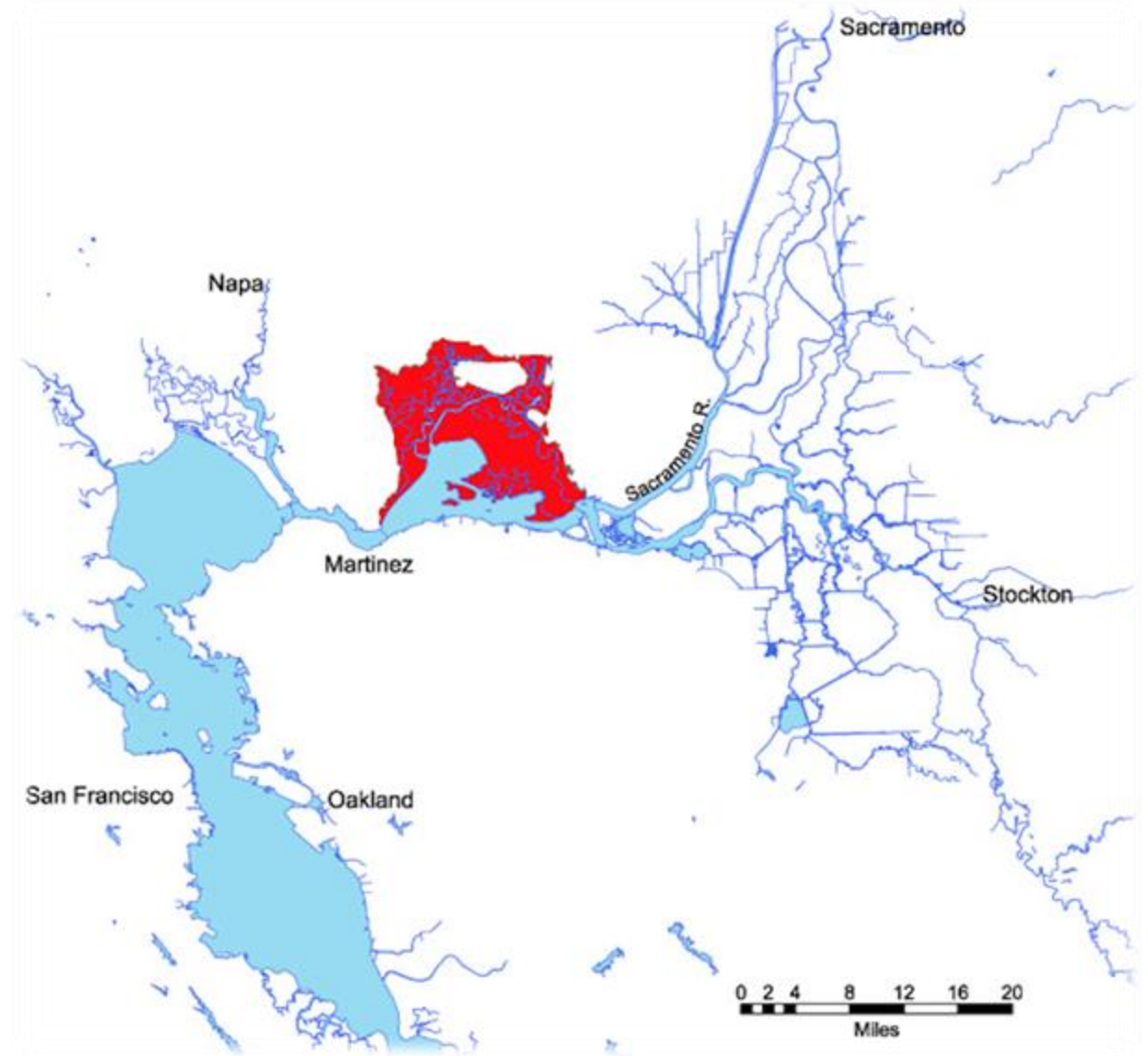


# **SUISUN MARSH PLANNING UPDATE**

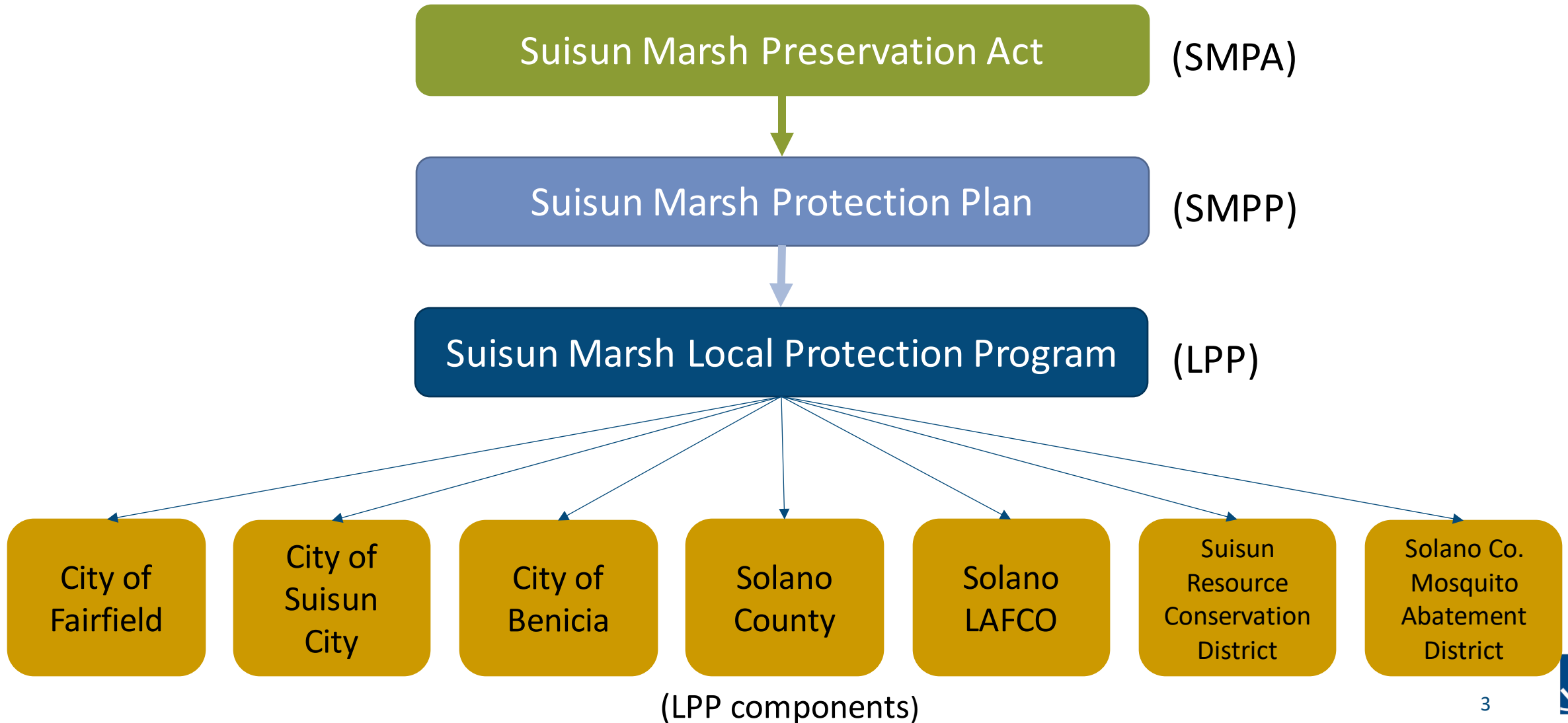
ERIK BUEHMANN, PLANNING MANAGER

# THE SUISUN MARSH

- Largest contiguous brackish marsh in the United States
- 10% of the total remaining natural wetlands in California
- Most productive type of marsh supporting the widest variety of marsh dependent wildlife

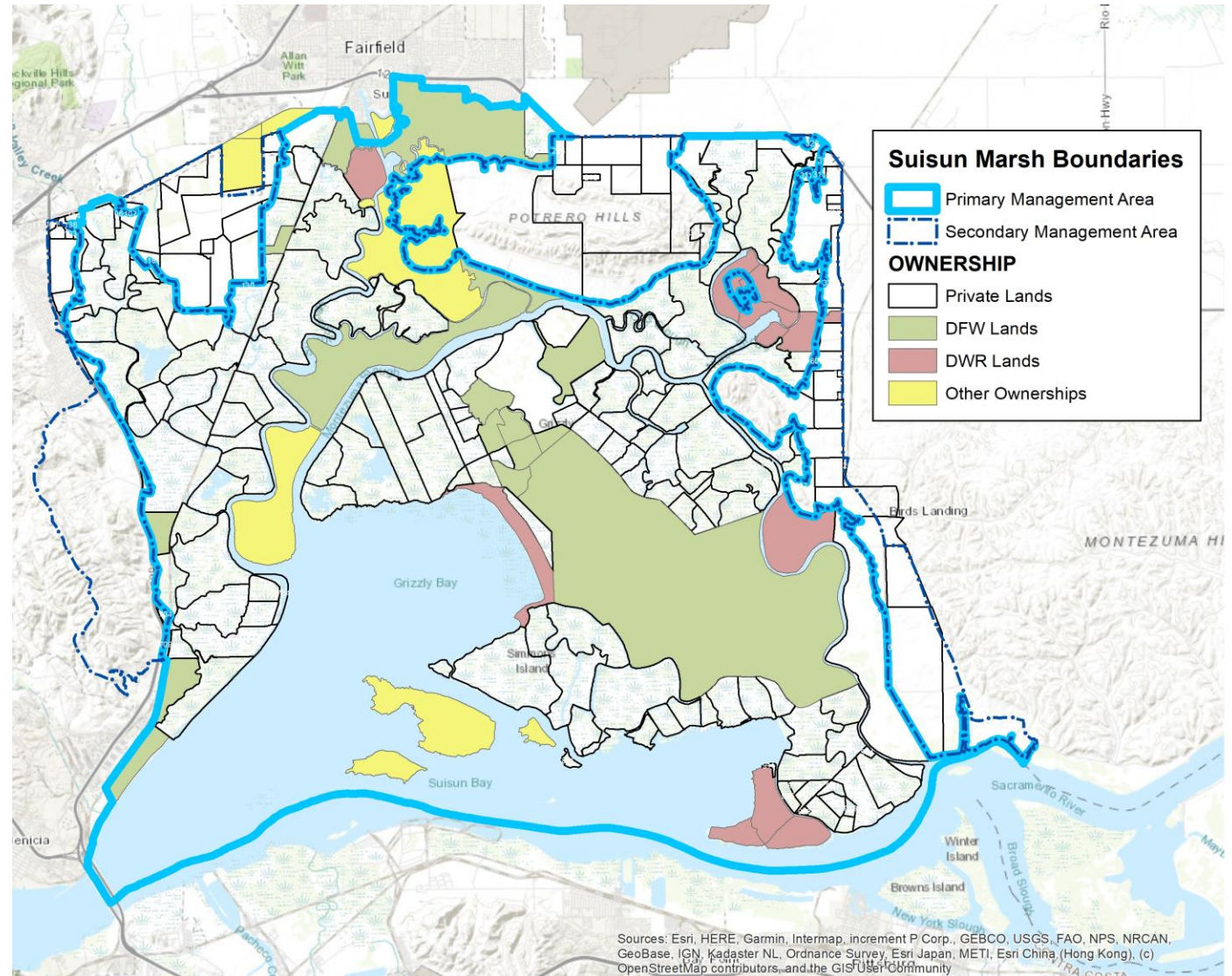


# BCDC'S SUISUN MARSH LAW AND POLICIES

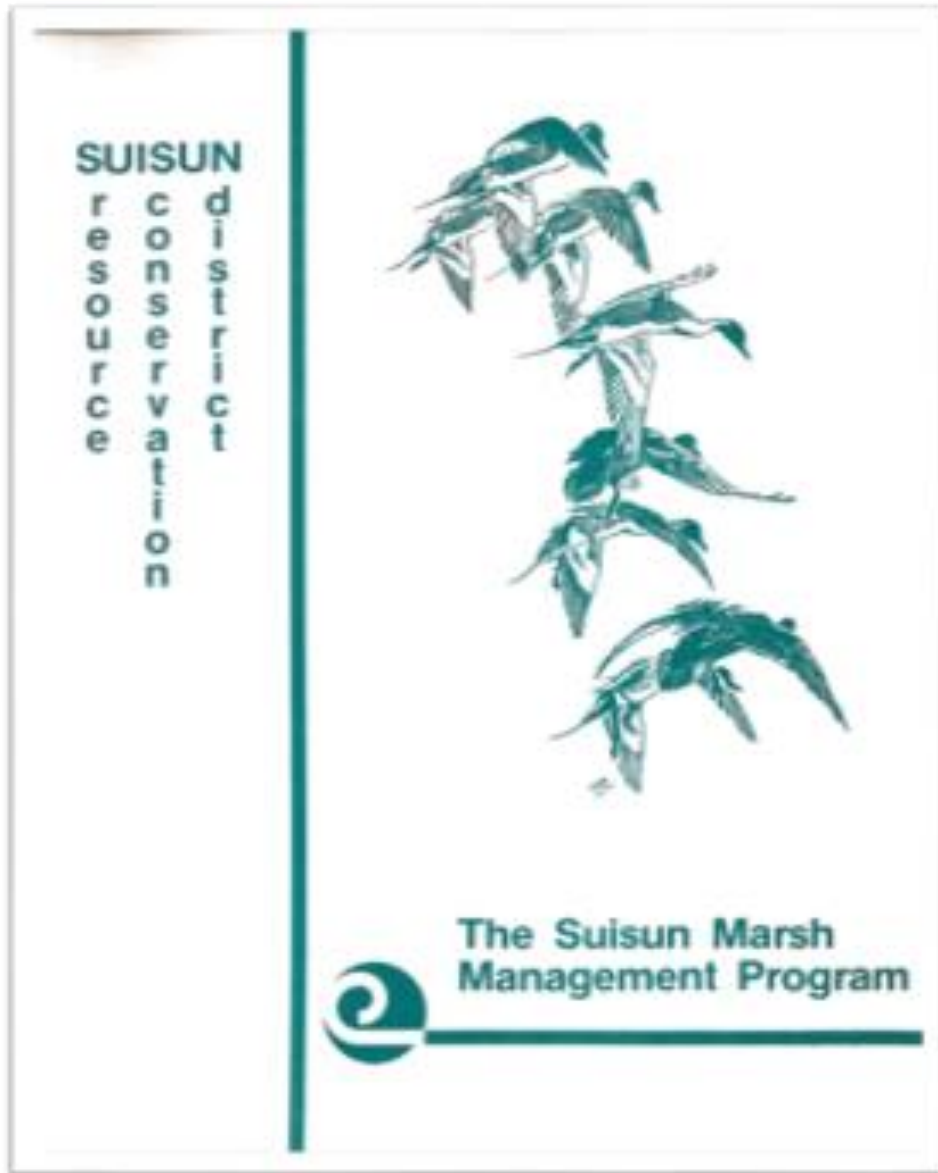


# BCDC PRIMARY AND SECONDARY MANAGEMENT AREAS

- Primary Management Area (blue)
- Secondary Management Area (dashed blue)
- Privately owned Managed Wetlands within the jurisdiction (black boundaries)



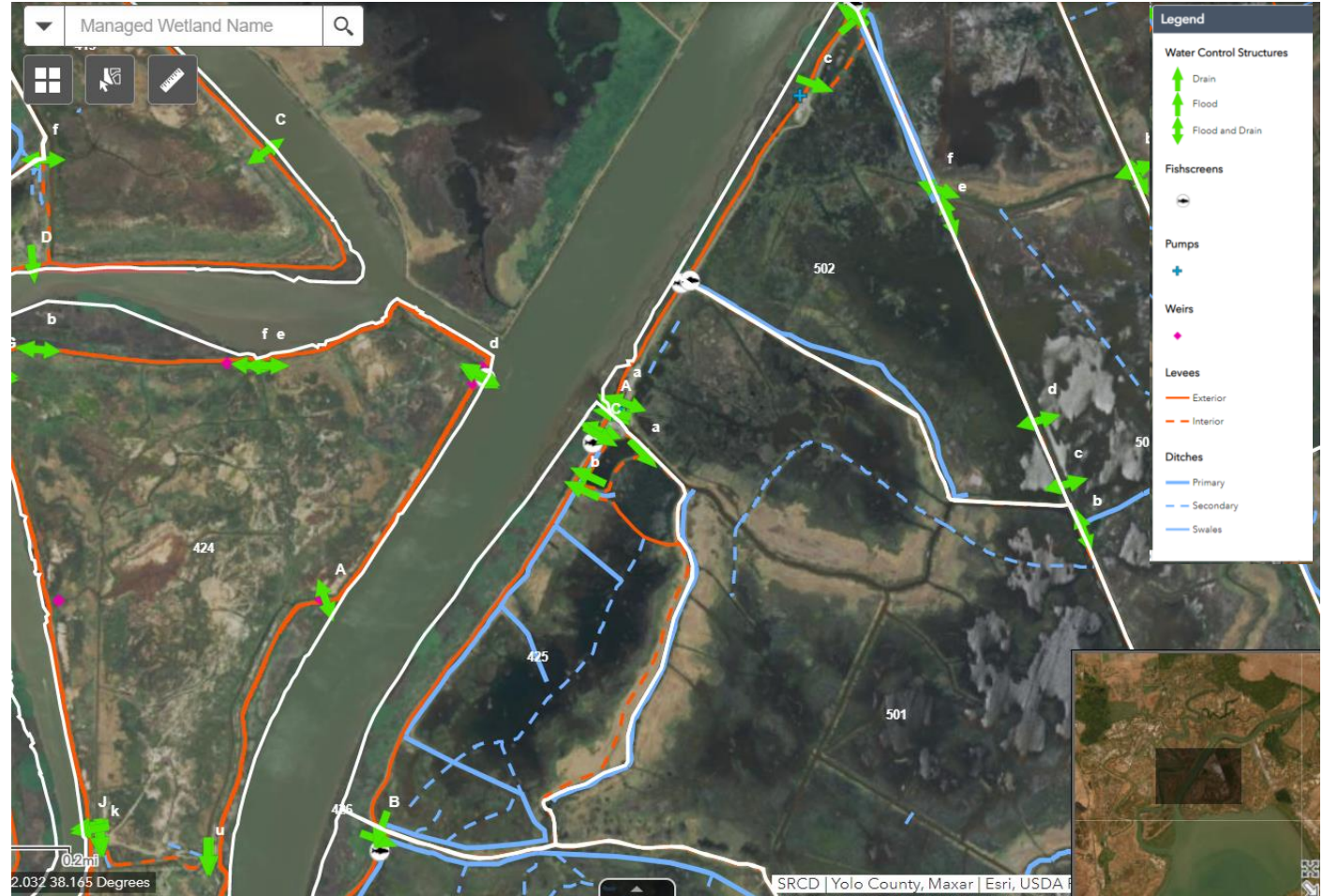
# 2022 – SRCD LOCAL PROTECTION PROGRAM UPDATE



- Certified by the Commission in 2022
- More flexible and practical framework for landowner's wetland management and incorporate new science that has been developed over the past 35 years
- Provide an adaptive management framework, using best available science
- Provide up to maps for date soil, elevation and infrastructure

# SUISUN MARSH GIS PLATFORM: GEOMARSH

- Web map visualizing private management activities and infrastructure in the marsh
- Co-managed by BCDC and SRCD
- Facilitates approvals for annual IMP updates



# BCDC STAKEHOLDER WORKSHOP – FEB 13, 2020



SACRAMENTO - SAN JOAQUIN  
**DELTA CONSERVANCY**  
A California State Agency



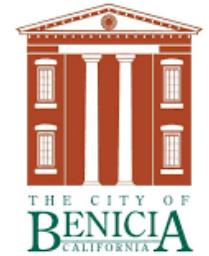
CITY OF  
**FAIRFIELD**  
CALIFORNIA



— BUREAU OF —  
**RECLAMATION**



*San Francisco Bay*  
National Estuarine Research Reserve



**US Army Corps  
of Engineers**®



**USDA** Agricultural  
Research  
Service

DELTA  
STEWARDSHIP  
COUNCIL



STATE WATER RESOURCES CONTROL BOARD  
REGIONAL WATER QUALITY CONTROL BOARDS



# PRIORITY ISSUE #1: CLIMATE CHANGE AND THE MARSH

- Managed wetlands provide important habitat benefits
- As sea level rise, whether to adapt managed wetlands or restore more habitat will be increasingly important
- The Marsh also includes critical infrastructure, including water and transportation.





# PRIORITY ISSUE #2: PUBLIC ACCESS

- Concerns about habitat restoration and public access.
- Wildlife-oriented public access should be encouraged.



# PRIORITY ISSUE #3: MAINTENANCE OF EXISTING FACILITIES



A water control structure being used to flood a managed wetland



View of the salinity control gates in Suisun Marsh

# BUILDING RELATIONSHIPS IN THE SUISUN MARSH

- Collaboration with SRCD on LPP updates
- Interagency Public Access Dialogues
- Delta Stewardship Council
- Stakeholder Engagement
  - Sustainable Solano
  - California Forever (aka Flannery Associates)



# CONCLUSIONS

**Recommendation 1:** Connect future Suisun Marsh Protection Plan updates with SB 272 and Bay Adapt Sub-Regional Adaptation Plans to address Marsh long-term resiliency.

**Recommendation 2:** Use the Suisun Marsh as a case study to explore bay-wide tensions around public access, sea level rise and habitat restoration to support future policy updates.

# BCDC LONG-RANGE PLANNING



erik.buehmann@bccdc.ca.gov



<https://www.bccdc.ca.gov/planning/>