

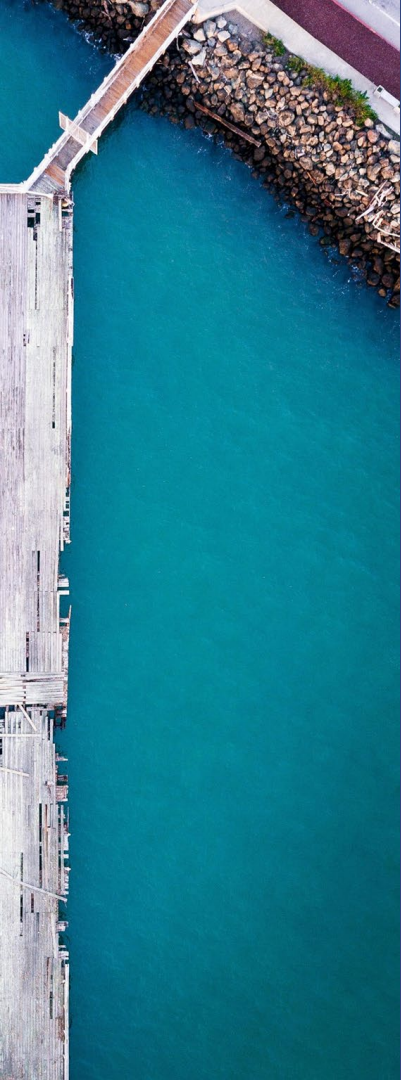


Regional Shoreline Adaptation Plan

An implementing project of **BAY ADAPT**

RISING SEA LEVEL COMMISSIONER WORKING GROUP

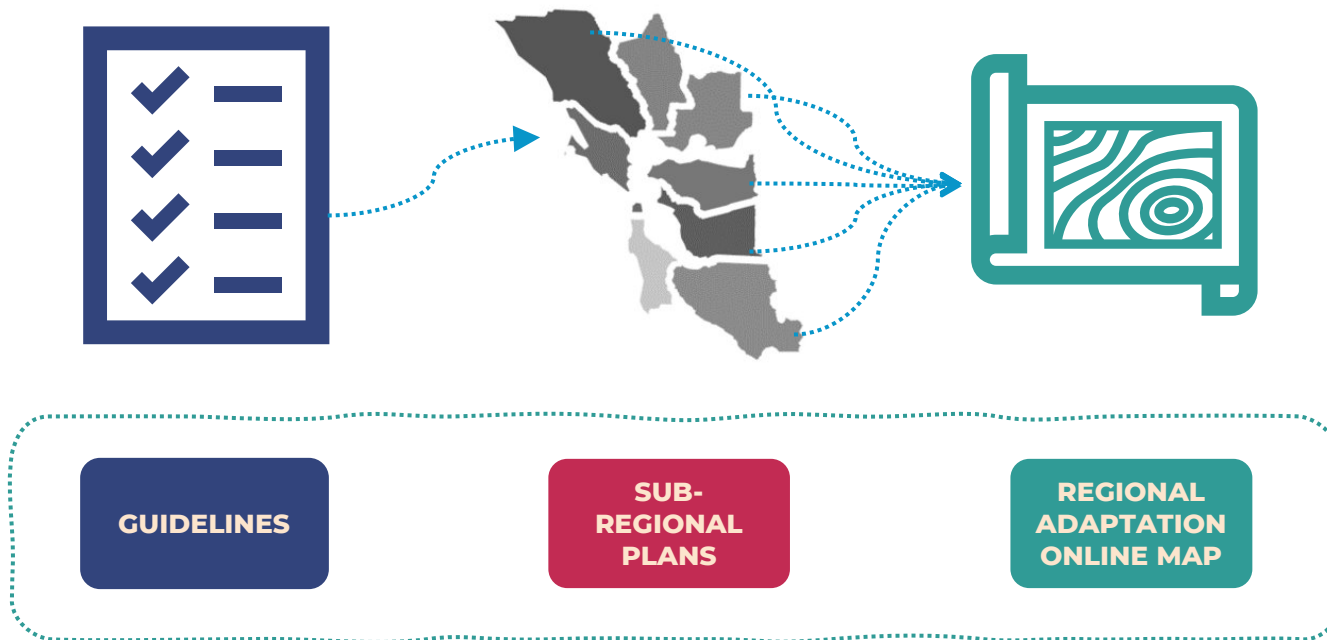
October 5, 2023



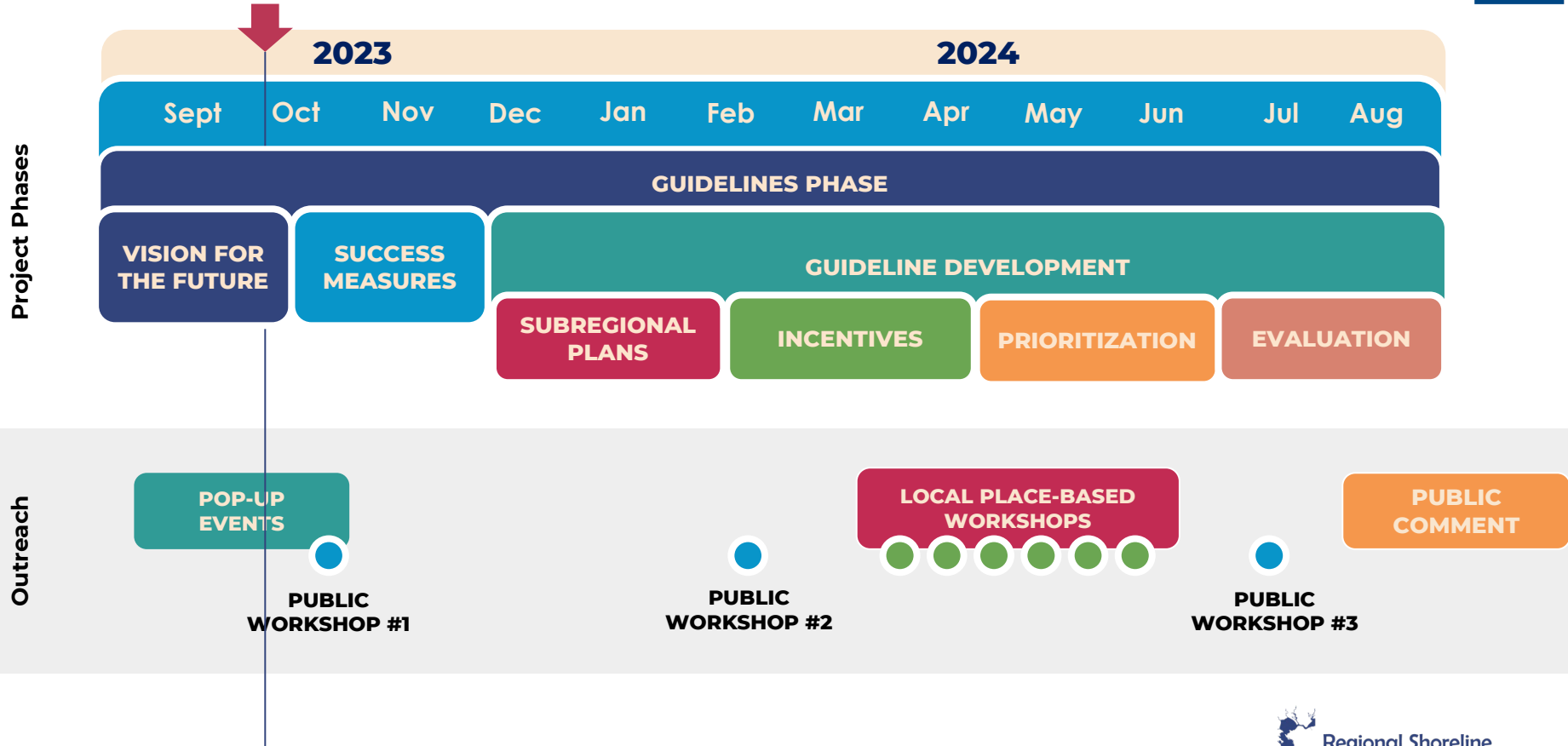
REGIONAL SHORELINE ADAPTATION PLAN

PROJECT UPDATE

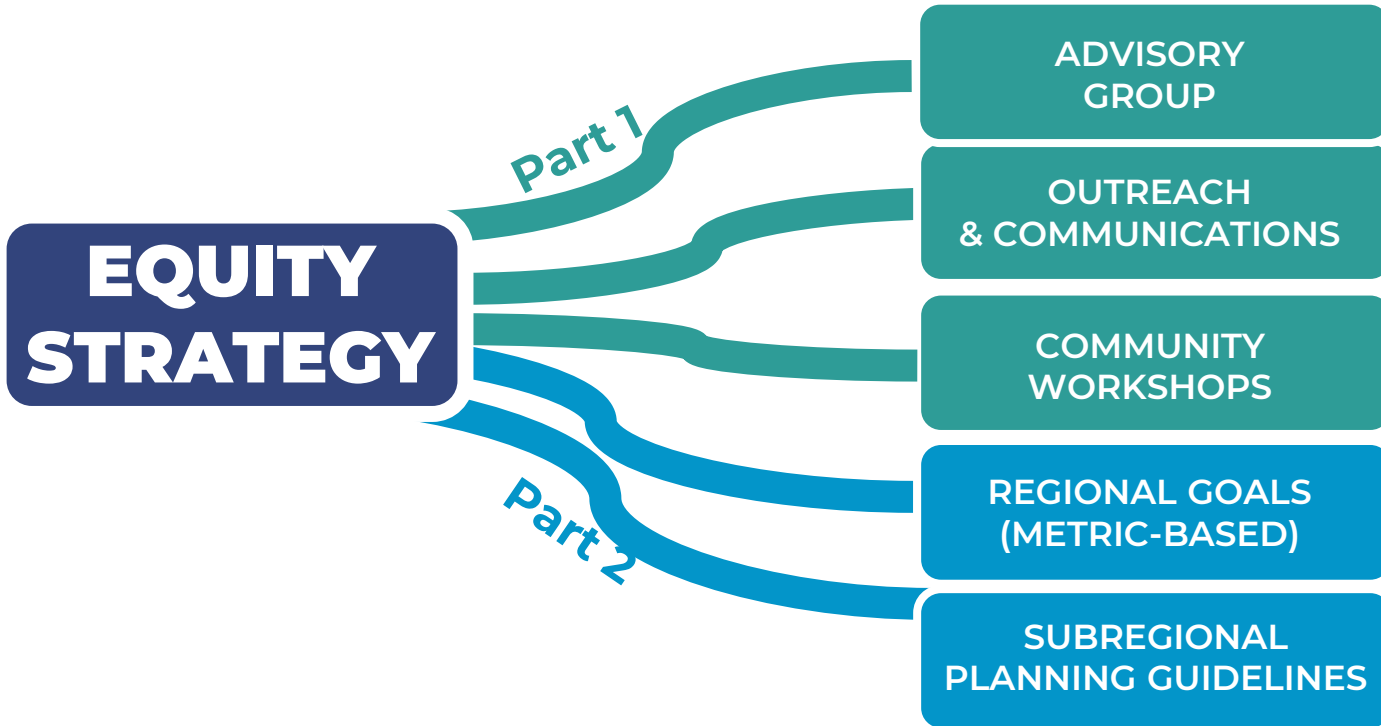
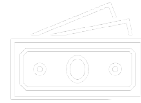
REGIONAL SHORELINE ADAPTATION PLAN COMPONENTS



PROJECT TIMELINE



EQUITY STRATEGY



WEBSITE UPDATES

PHASE 1 - COMPLETED

- New project pages for Regional Shoreline Adaptation Plan and SAPMAP
- Events page
- Bay Adapt Blog

PHASE 2 - UNDERWAY

- Updated team page
- More projects added
- New overview of Joint Platform progress page

www.bayadapt.org

BAY ADAPT
REGIONAL STRATEGY FOR A RESILIENT BAY

ABOUT | JOINT PLATFORM | ACTIONS | PARTICIPATE | LEARN

About the Regional Shoreline Adaptation Plan

Ensuring governments and communities across the region are working together to **achieve consistent standards to achieve shared adaptation success.**

[About This Project](#) [Project Update](#) [Learn More](#) [Get Involved](#)

About This Project

Rising sea levels from climate change are already encroaching along our shorelines and will only accelerate in the coming decades. The impacts of sea level rise – and resources to plan and prepare for them – are unevenly distributed across the nine-county Bay Area. If everyone “goes it alone,” we risk maladaptation – catastrophic consequences such as unintentional flooding of our neighbors, leaving behind communities most at risk and with the least resources to adapt, the loss of our essential and invaluable coastal habitats, and missing out on opportunities to find shared solutions that benefit both local communities and the region as a whole.

The Regional Shoreline Adaptation Plan is a regionwide plan for the Bay shoreline that guides the creation of coordinated, locally-planned sea level rise adaptation actions that work together to meet regional goals.

Project Update

What can the future of the Bay Area and its shorelines look like?

Take this survey!
And help us shape a Vision for the Future of our Shorelines!

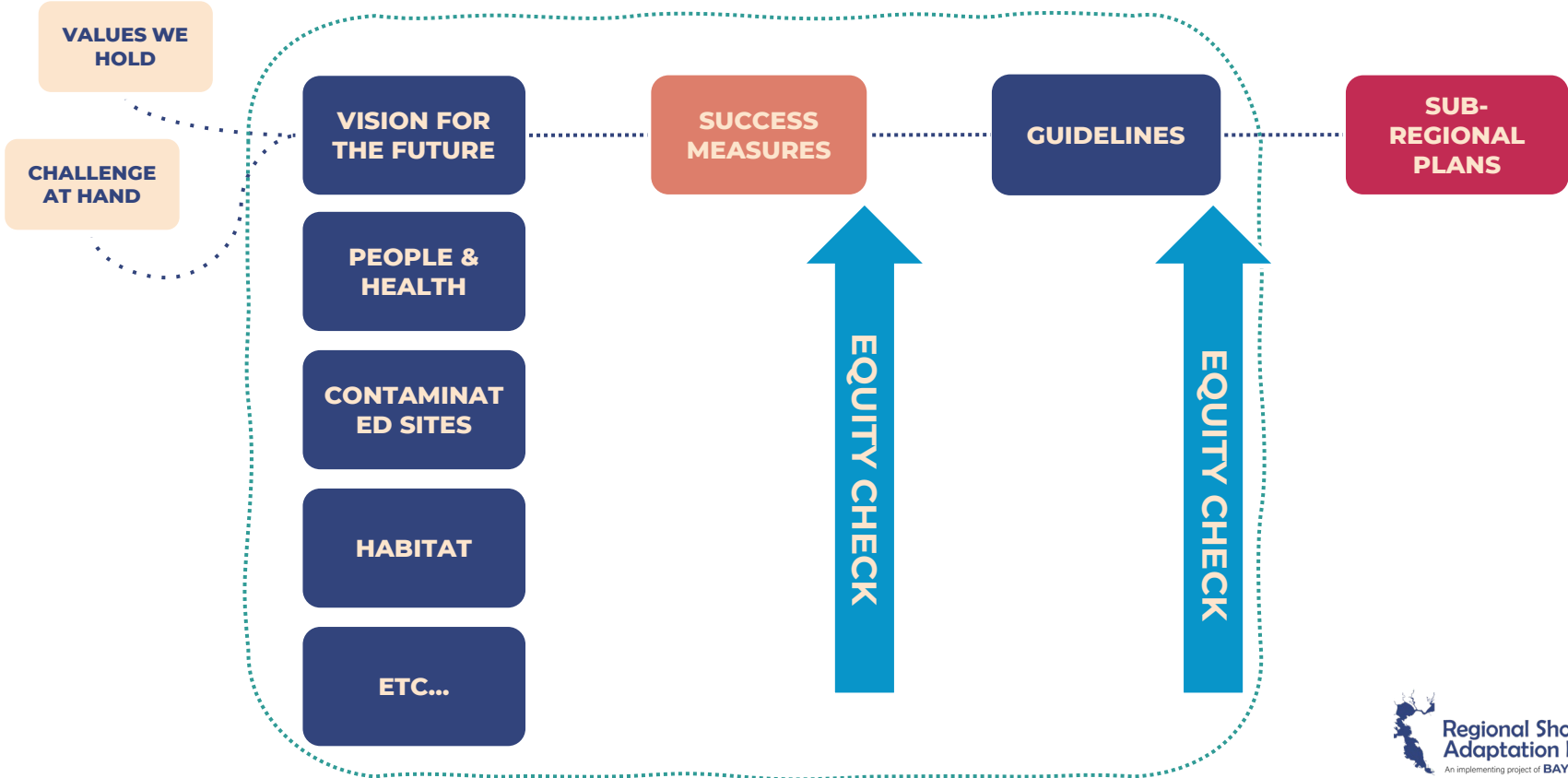
Please take this seven-minute survey to help us shape a shared vision for the future of the Bay Area's shorelines and the people and ecosystems who depend on it.

Timeline

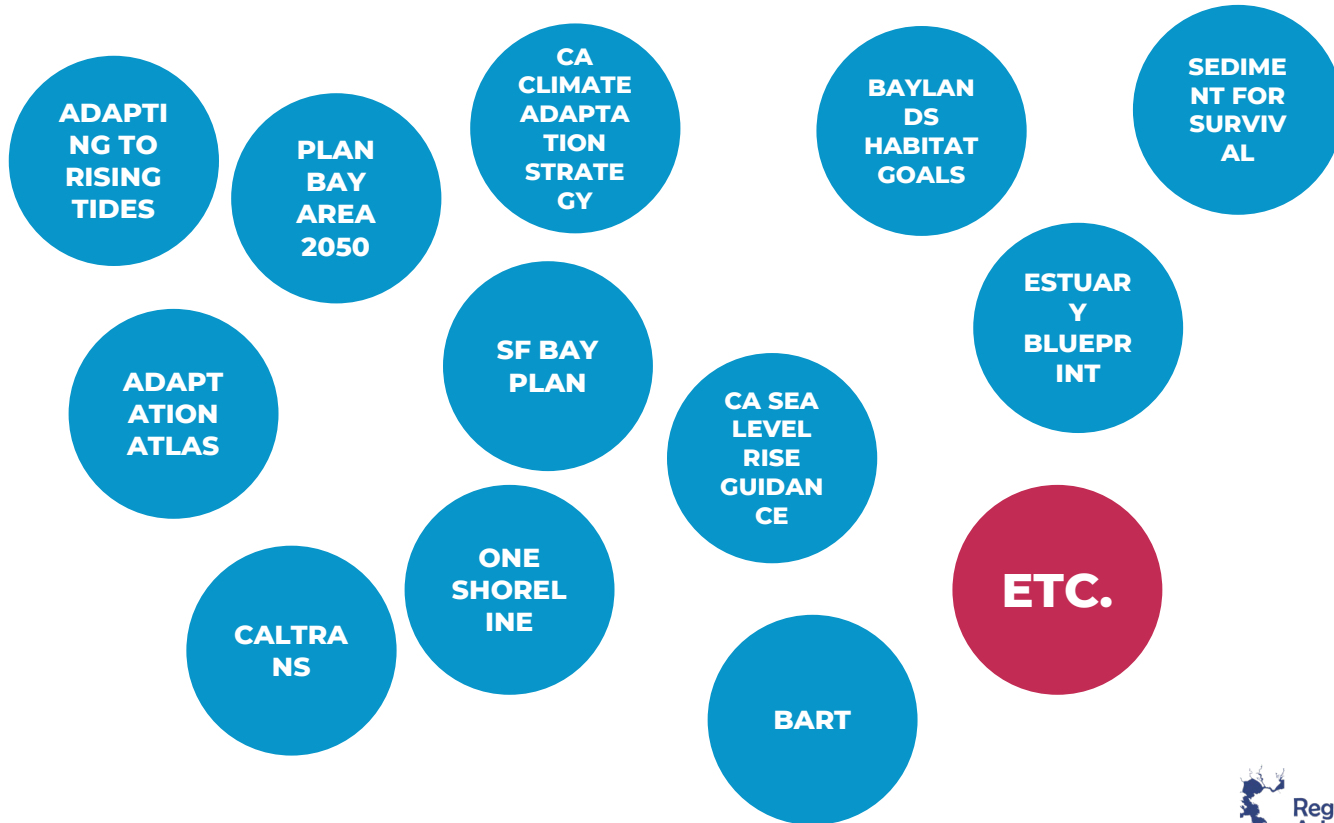
- Project Kickoff
January 2023
- Consultant Onboarding
February – June 2023
- Vision And Measures Of Success
July – October 2023
- Subregional Adaptation Plans
November 2023 – February 2025
- Guidelines And Incentives
March – July 2024
- Final Draft And Public Comment
August – September 2024
- Adoption Of The Guidelines
Anticipated October – November 2024

**DEVELOPING VISIONS
& MEASURING SUCCESSES**

GUIDELINES COMPONENTS



BACKGROUND RESEARCH



FALL POP-UPS



- 9/7: Richmond - Thrive Thursday
- 9/8: San Rafael - Free Movies - Peacock Park "Vivo"
- 9/17: Newark - Newark Days Community Information Faire
- 9/22: San Rafael - Free Movies in Pickleweed Park
- 9/23 San Francisco – Youth Climate EJ Summit
- 9/30: Oakland - Land is Liberation
- **10/7: American Canyon - Pumpkin Path**
- **10/14: Menlo Park – Belle Haven Neighborhood Block Party**
- **10/15: Mountain View - 40th anniversary of Shoreline at Mountain View Regional Park**

WHAT'S YOUR VISION FOR THE FUTURE OF THE SHORELINE?

100+ responses on survey so far

A **lovely bay** surrounded by wetlands with **healthy plants and wildlife** where people can visit but there is enough **safe affordable housing** so that no one is threatened by rising contaminants or has a house threatened by sea level rise.

-Wendy, Sonoma

The Bay Area is a **sanctuary for people who live here** - especially BIPOC and LGBTQIA+ people and families with children with **abundant green space** and **vibrant cities and towns**.

-Heidi, San Francisco

Living, biodiverse shoreline and **vibrant** community.

-Rebecca, Berkeley

A reimaged Bay Area. I don't think we can expect everything to remain as it is now. We need to create a future that prioritizes **functioning natural systems** alongside **healthy human communities**.

-Tamara, Oakland

Think and act for the long term. Find flexible nested solutions that create **positive impacts for the majority of living beings, including the planet.**

-Diana, Alameda

Dramatically and immediately **reducing the future levels of increase** -- e.g., immediate and dramatic reduction and **drawdown of GHGs.**

-Anonymous

"Strategic realignment" that is, abandonment of low-lying residential areas.

-Rob, Alameda

The Bay is a precious resource and needs to be protected. Create a **buffer of clean, natural land** to provide adaptation to SLR to **protect natural ecosystems and wildlife.** Move housing and buildings back from the shoreline.

-Naomi, Menlo Park

VISIONING SURVEY

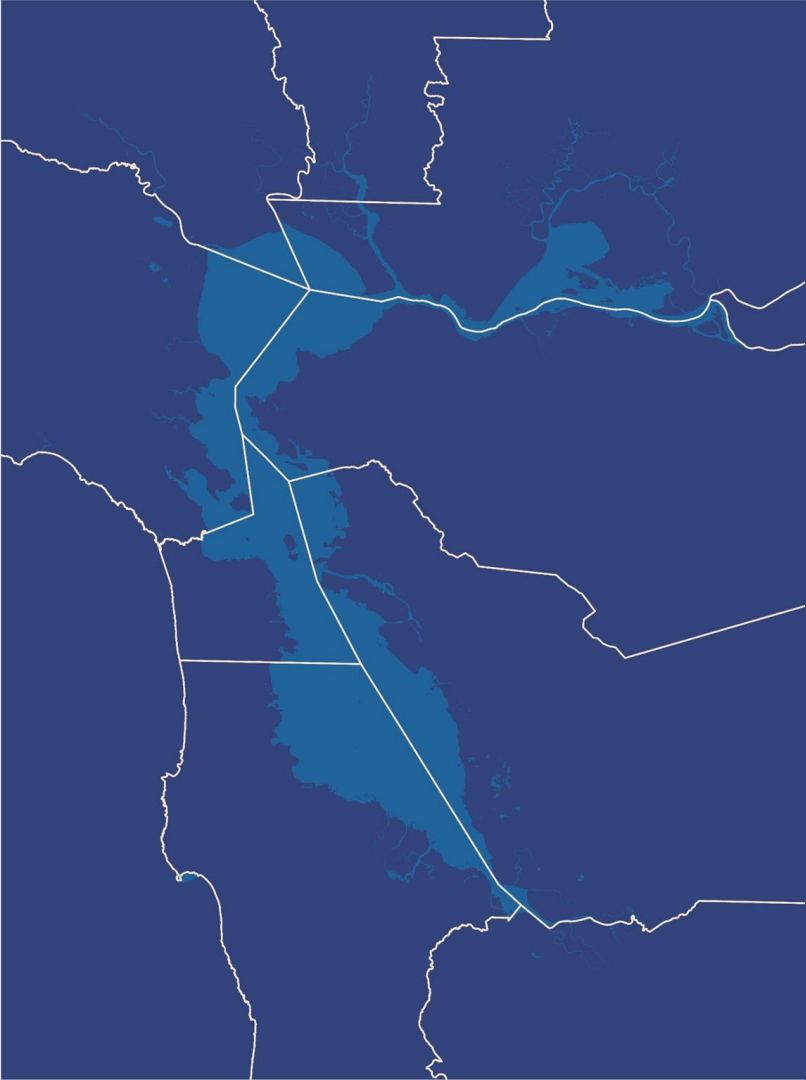


<https://d34njgmmi7g.typeform.com/RSAPVision?typeform-source=www.bayadapt.org>

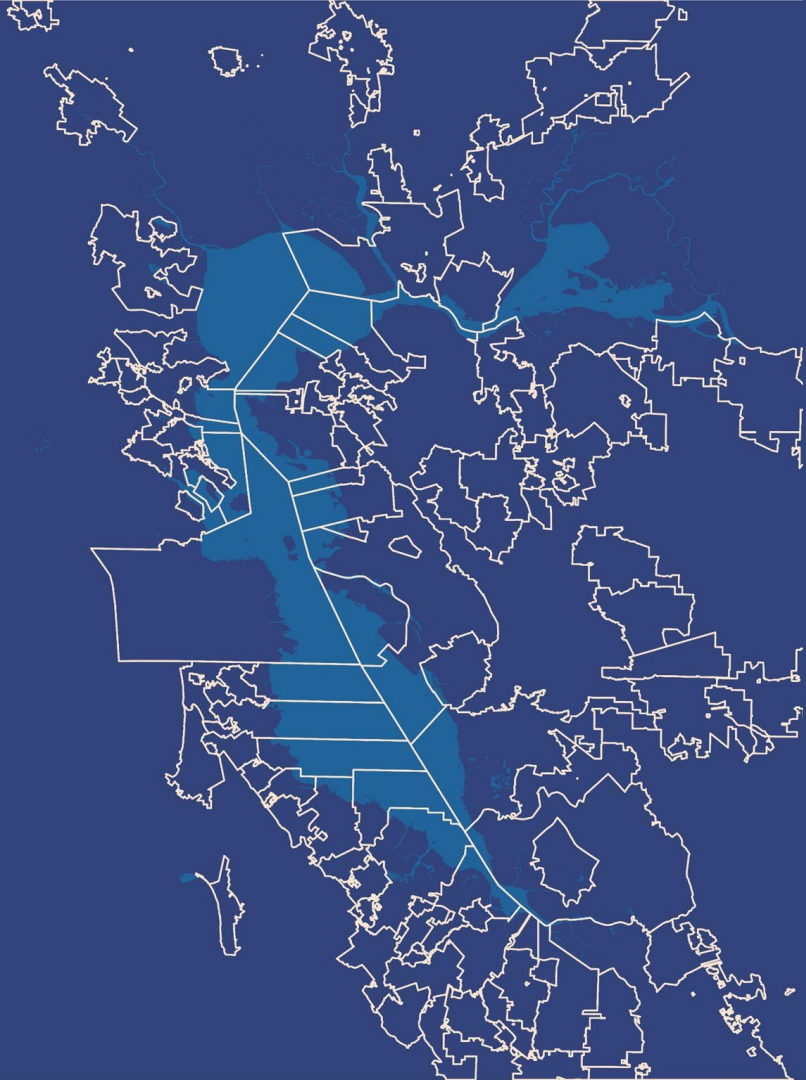
VISIONING DISCUSSION

- What is the most interesting thing about the survey results?
- Is that most interesting thing applicable regionally or is it different locally?
- What do you think the rest of the Commissioners will find most interesting?
- Will the answers of local elected officials be different than those of other members of the Commission?

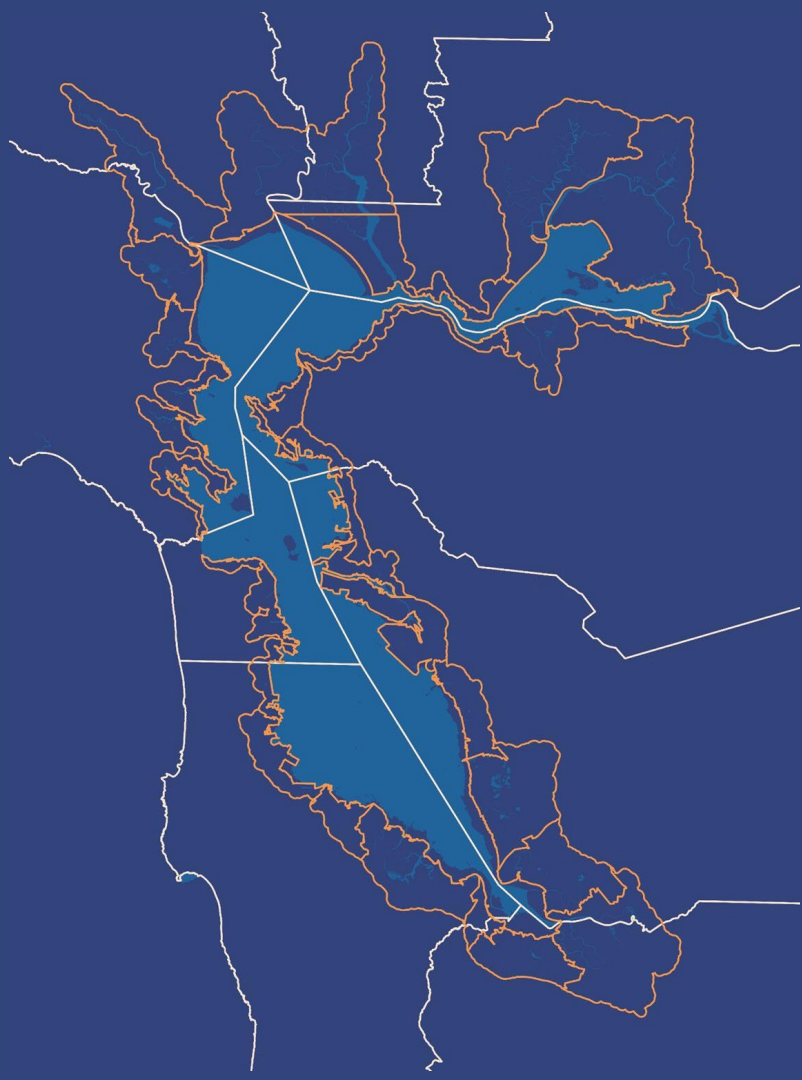
SUBREGIONAL PLANNING SCALE



county



city



county + OLU

SUBREGIONAL ADAPTATION PLANS

WHAT IS A SUBREGIONAL PLAN?

WHAT IS IN A SUBREGIONAL PLAN?

- Legal requirements (i.e., SB 272)
- What have jurisdictions already done?
- What is missing and necessary?

WHAT DOES THE PLAN DEVELOPMENT PROCESS LOOK LIKE?

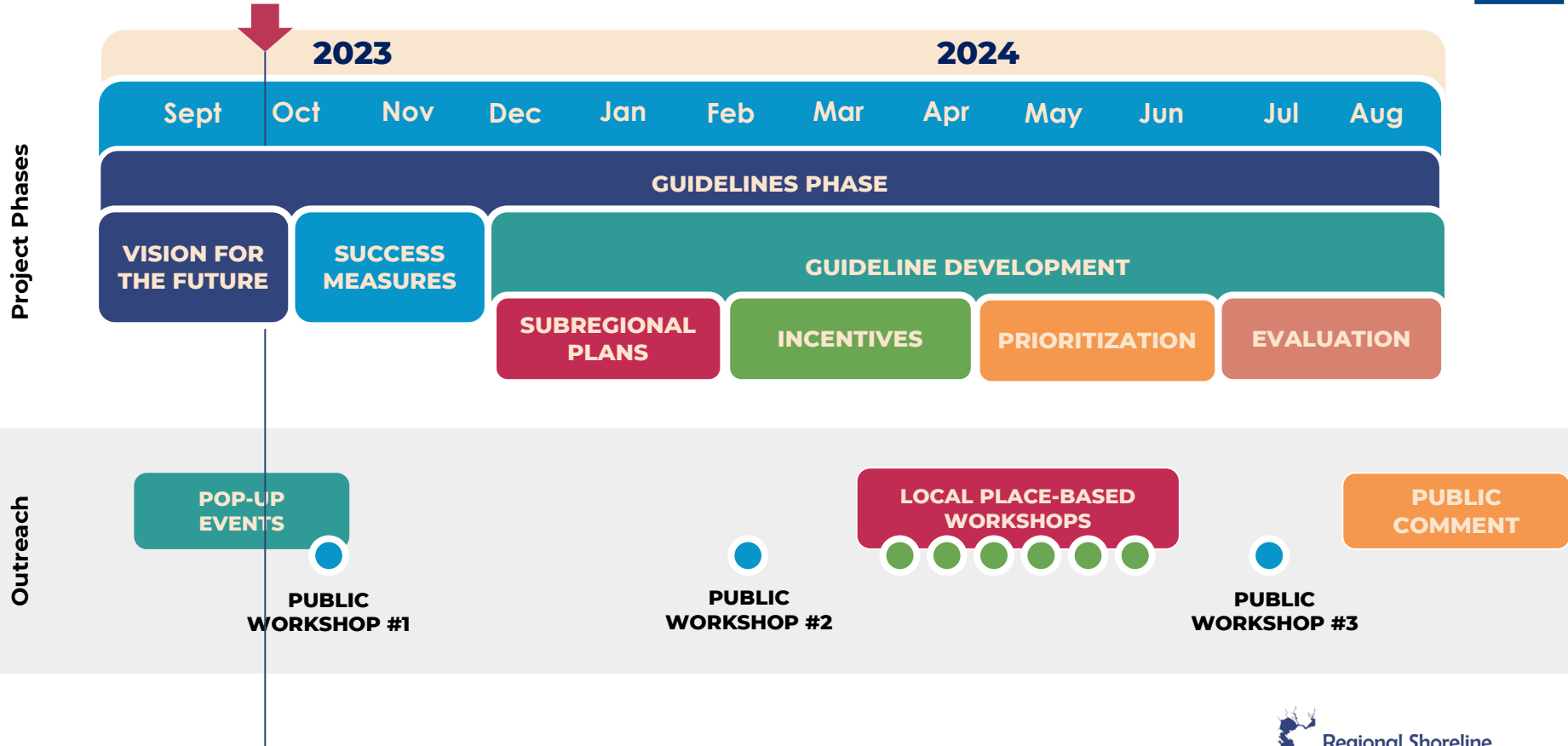
- What's the scale and who leads?
- How can plans align with existing mandates?
- How often should subregional plans be updated?

HOW IS A PLAN EVALUATED, ADOPTED AND IMPLEMENTED?

- What makes a plan “successful” or eligible for incentives?
- Are elements incorporated into General Plan or Capital Plans?

PROJECT NEXT STEPS

PROJECT TIMELINE



UPCOMING OUTREACH

POP-UP EVENTS

- 9 identified, 6 complete!

COMMUNITY SURVEY

- Live on website!

ELECTEDS BRIEFINGS

- Sonoma, Napa, Richmond so far

NEXT STEPS

- Commissioner briefing
October 19
- Public Workshop #1
October 26
- Briefings in Contra Costa, Marin, and Alameda

