

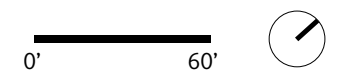
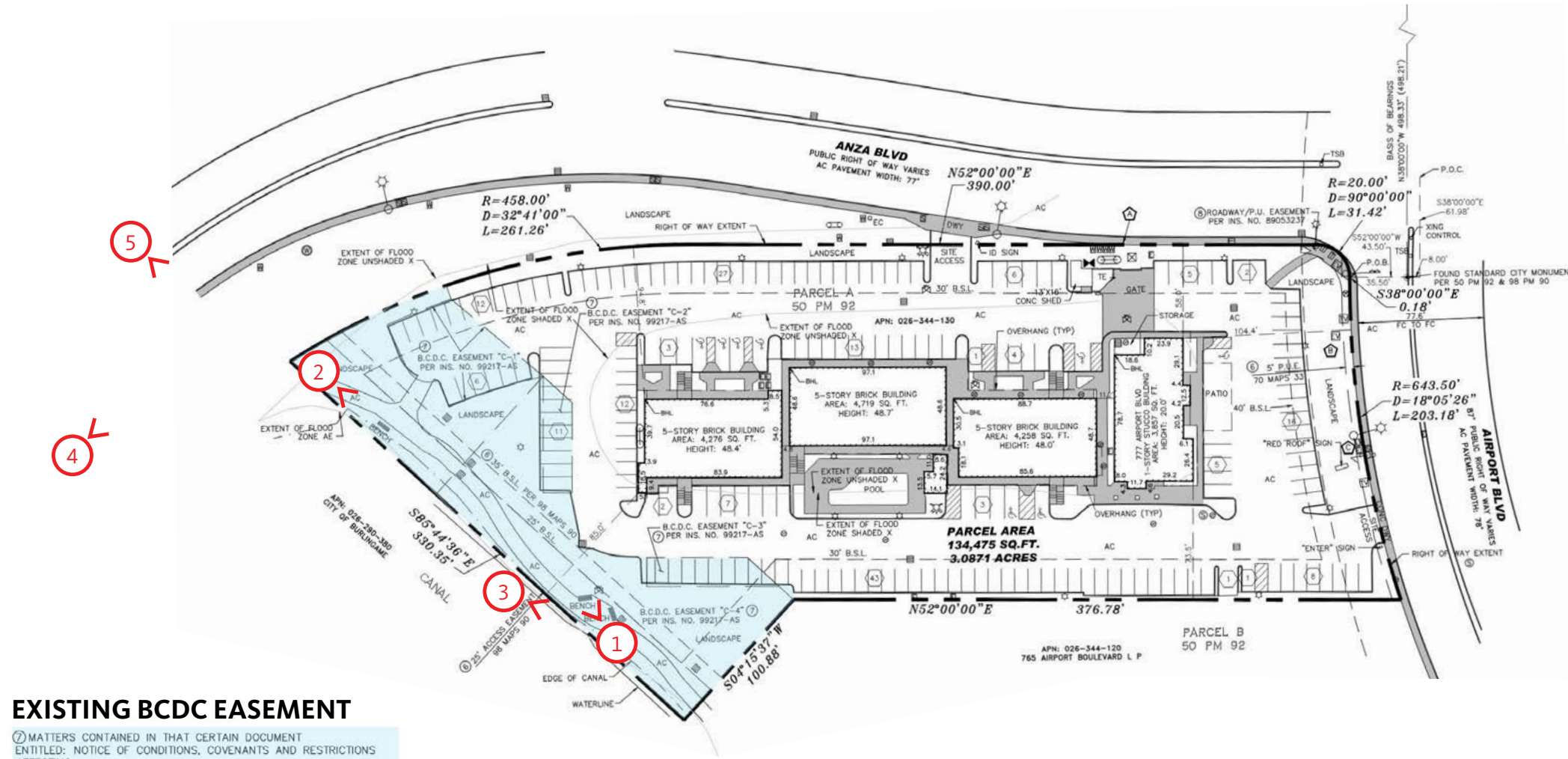
An architectural rendering of a modern, multi-story building with a glass and metal facade. The building is situated on a street corner with traffic lights and landscaping. The sky is clear and blue. The text is overlaid in the center of the image.

777 AIRPORT BLVD
BCDC COMMISSION PRESENTATION
JULY 20, 2023

777 AIRPORT BLVD | VICINITY MAP



777 AIRPORT BLVD | EXISTING LAGOON SHORELINE



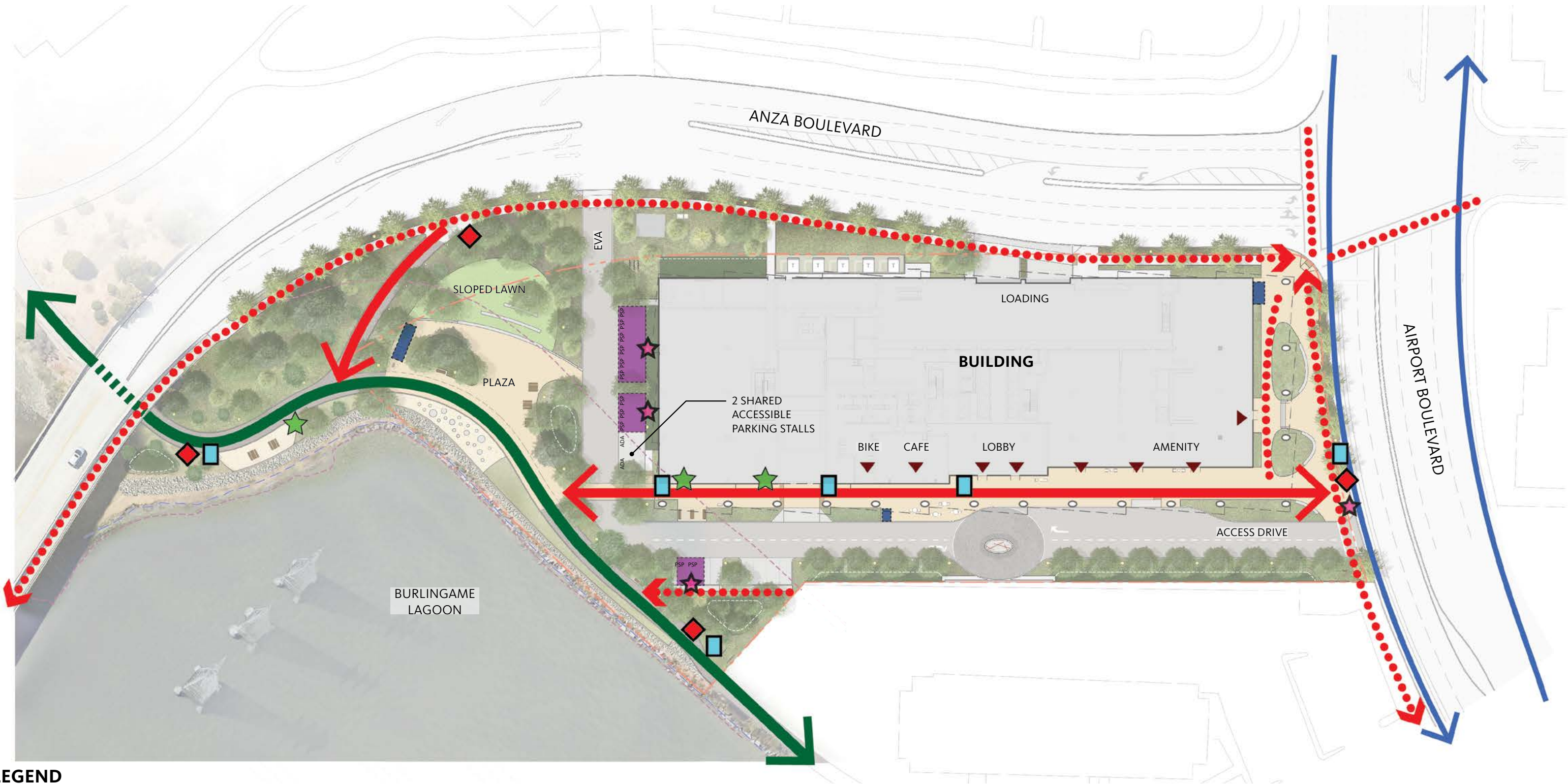
777 AIRPORT BLVD | SITE PLAN



SITE AREA	3.087 AC
BUILDING HEIGHT	194' (13 FLOORS)
PROJECTED # OF EMPLOYEES	1,965
MAX # OF PEOPLE ON SITE	1,985
PUBLIC SHORE PARKING SPACES	11
TOTAL PARKING SPACES	911



777 AIRPORT BLVD | SHORELINE ACCESS DIAGRAM

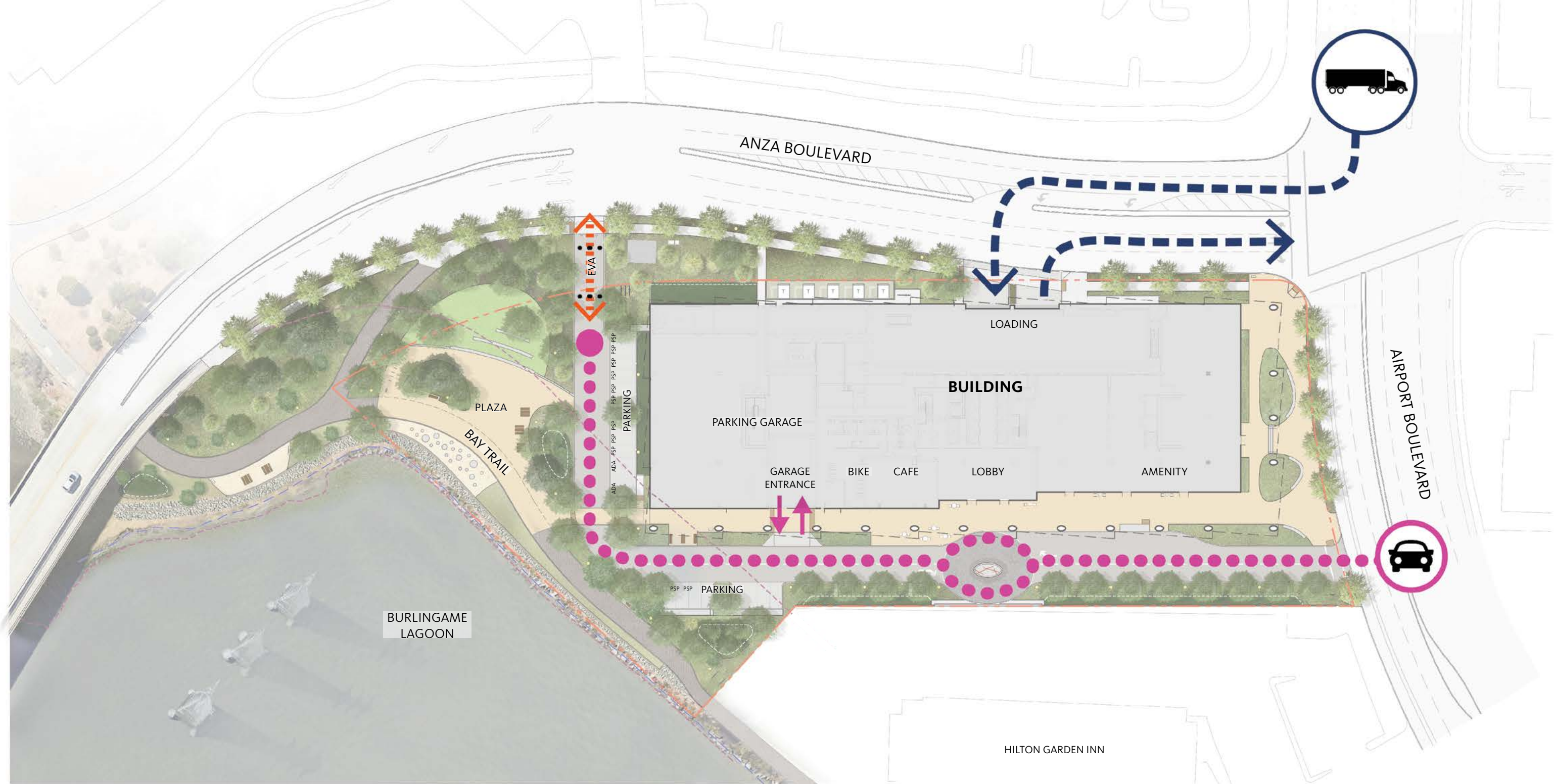


LEGEND

- | | | | | | | | | | |
|--|------------------------------------|--|--------------------|--|--------------------------------------|--|---------------------------|--|----------------------|
| | BAY TRAIL (SHARED USE) | | WALKING PATH | | PUBLIC SHORE PARKING (11 PSP STALLS) | | BAY TRAIL SIGN | | INTERPRETIVE SIGNAGE |
| | PEDESTRIAN CONNECTION TO SHORELINE | | BUFFERED BIKE LANE | | BICYCLE PARKING | | PUBLIC SHORE PARKING SIGN | | CAFE SIGNAGE |



777 AIRPORT BLVD | VEHICULAR CIRCULATION



LEGEND

LOADING ROUTE

VEHICULAR ROUTE

EMERGENCY VEHICLE ACCESS



777 AIRPORT BLVD | AIRPORT BLVD PLAZA



KEY PLAN

777 AIRPORT BLVD | LINEAR PLAZA FROM AIRPORT BLVD



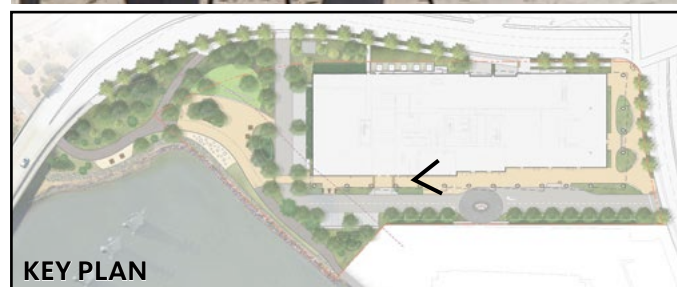
KEY PLAN

777 AIRPORT BLVD | LINEAR PLAZA AND PUBLIC CAFE FROM AIRPORT BLVD

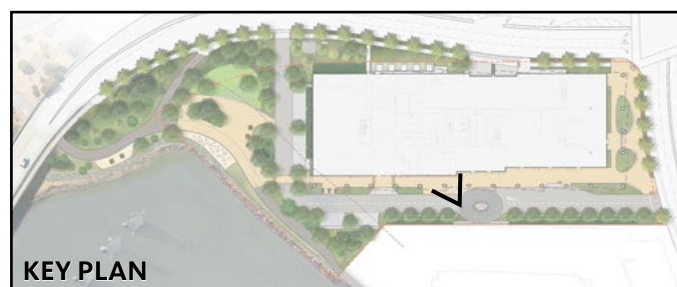


KEY PLAN

777 AIRPORT BLVD | LINEAR PLAZA AND PUBLIC CAFE FROM THE SHORELINE

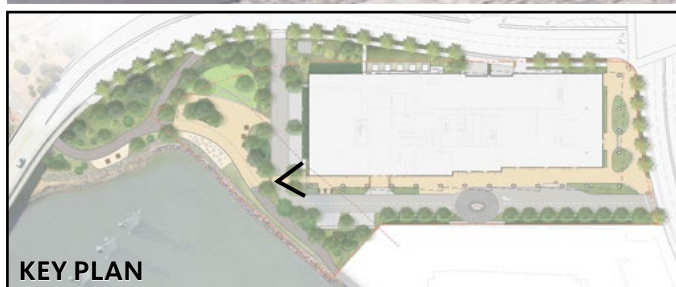


777 AIRPORT BLVD | PUBLIC CAFE AT LINEAR PLAZA



KEY PLAN

777 AIRPORT BLVD | INTERPRETIVE SIGNAGE AT LINEAR PLAZA



KEY PLAN

777 AIRPORT BLVD | BAY TRAIL AND SHORELINE PLAZA



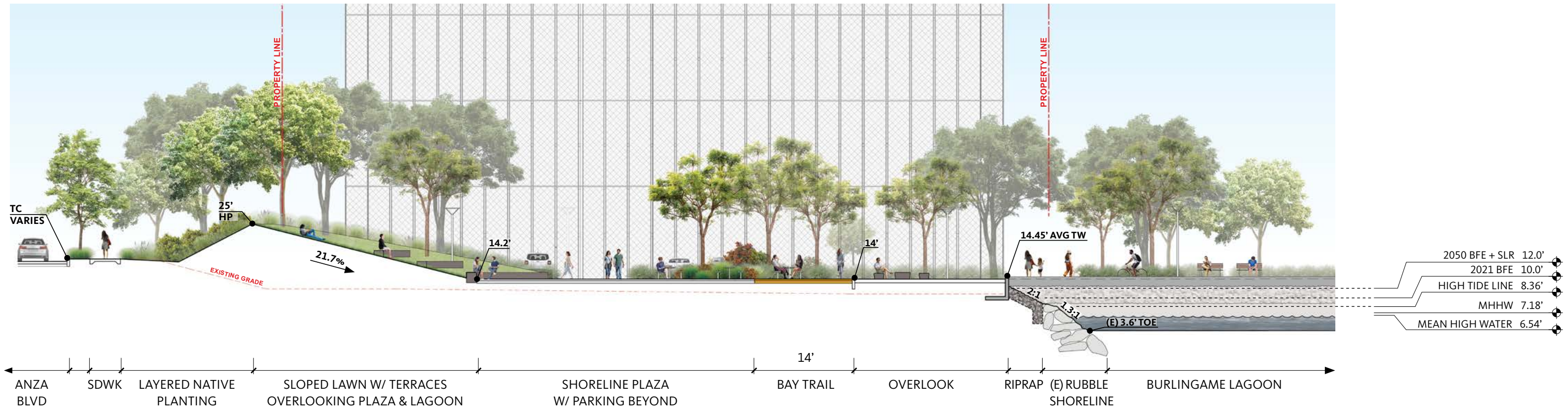
777 AIRPORT BLVD | BAY TRAIL AND OFFSITE SHORELINE IMPROVEMENTS



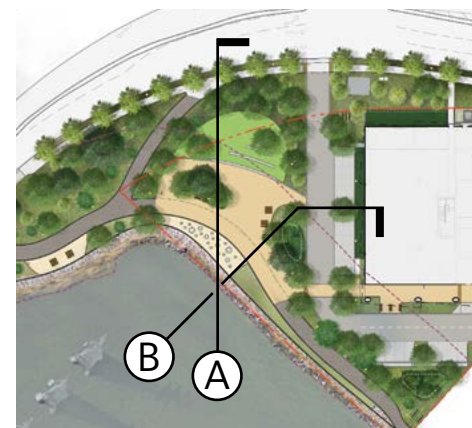
KEY PLAN

777 AIRPORT BLVD | SHORELINE INFRASTRUCTURE - SEA LEVEL RISE (MID-CENTURY)

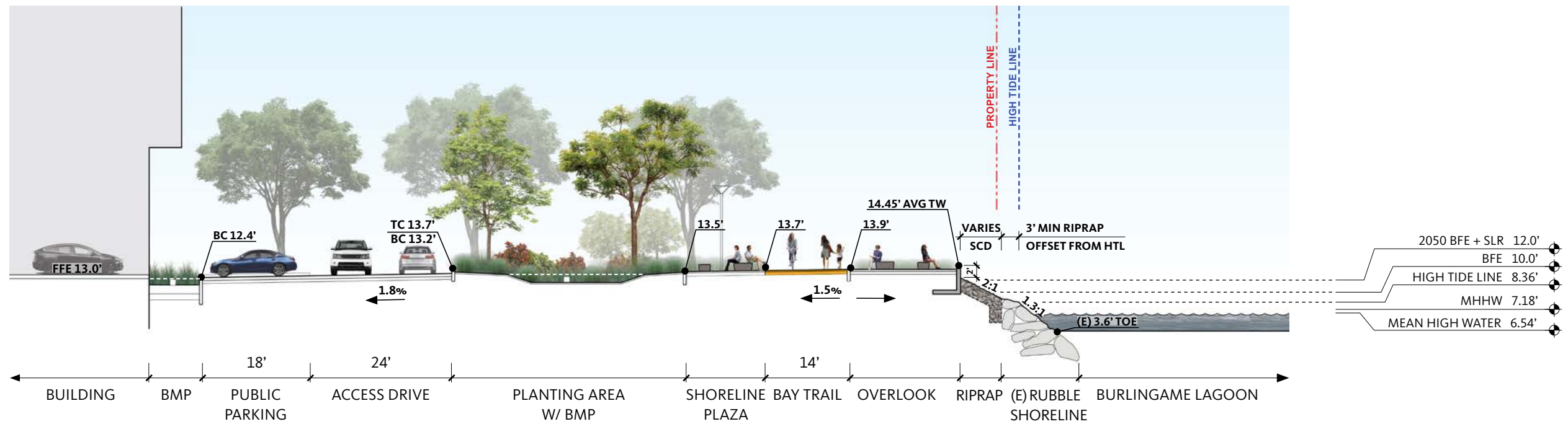
SECTION (A)



SECTION (B)



KEY PLAN



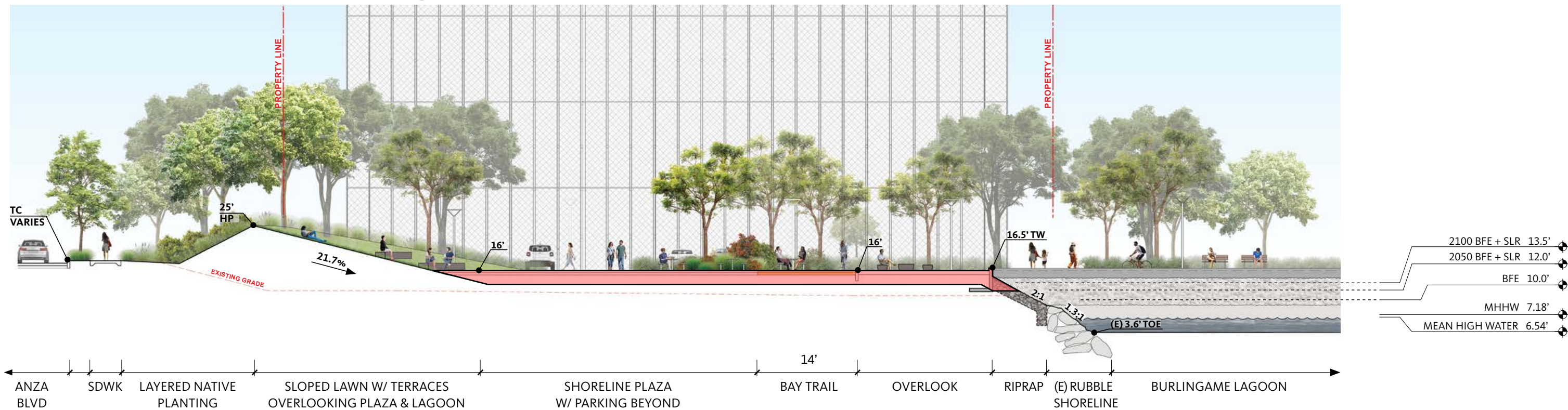
Elevations are based on NAVD88 Datum.

*Proposed shoreline revetment will provide long-term resiliency and flood protection per City and BCDC requirements.

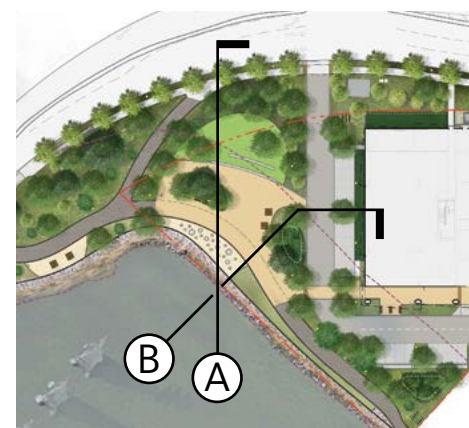
0' 20'

777 AIRPORT BLVD | SHORELINE SECTION: ADAPTATION TO 16FT MINIMUM SHORELINE ELEVATION

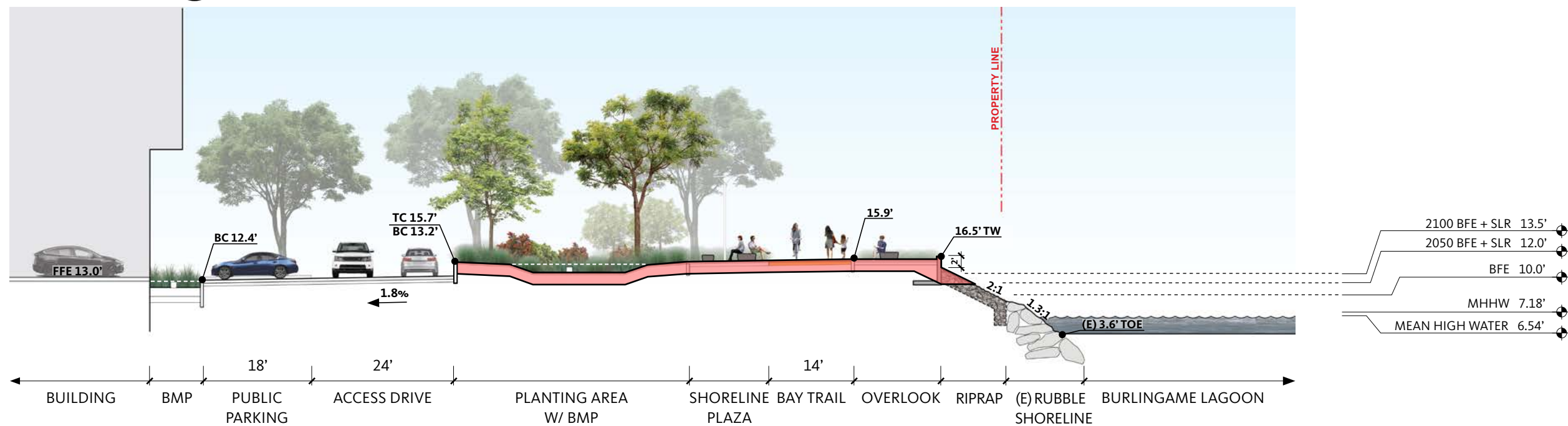
SECTION (A)



SECTION (B)



KEY PLAN



Elevations are based on NAVD88 Datum.

*Proposed shoreline revetment will provide long-term resiliency and flood protection per City and BCDC requirements.

0' 20'

777 AIRPORT BLVD | SITE FURNISHINGS



① SHORELINE BENCHES & TABLES



② SHORELINE LIGHTING



③ BIKE RACKS



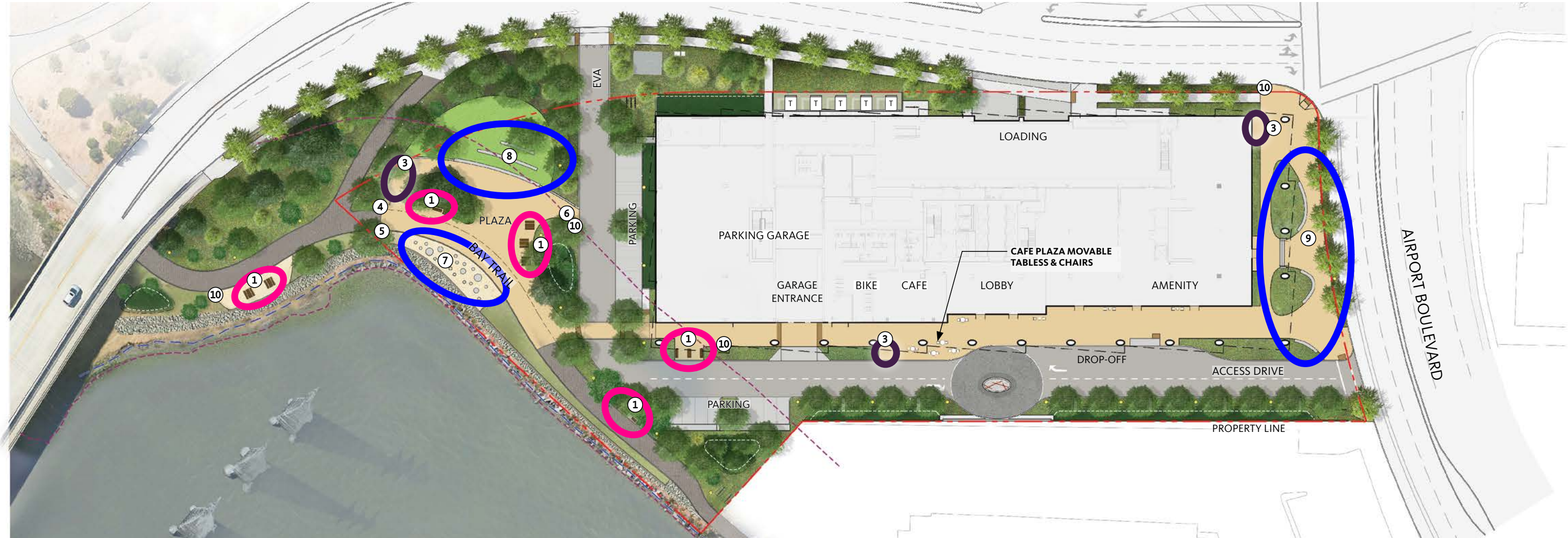
④ DRINKING FOUNTAIN



⑤ BINOCULARS



⑥ DOG BAG DISPENSER



⑦ PRECAST CONCRETE SEATING



⑧ PRECAST CONCRETE SEATING AT LAWN

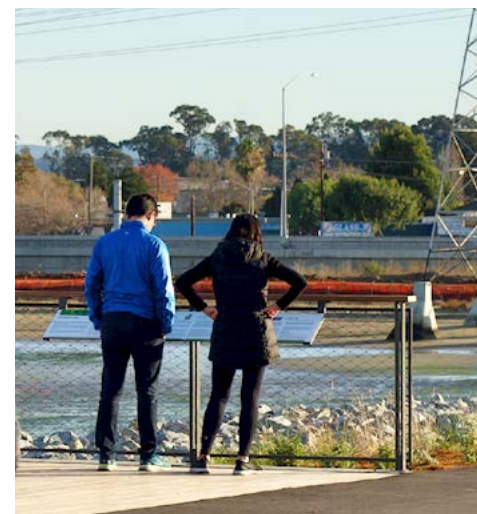


⑨ PRECAST CONCRETE SEATING AT PLAZA



⑩ TRASH & RECYCLING RECEPTACLES

777 AIRPORT BLVD | SHORELINE FURNISHING CHARACTER



777 AIRPORT BLVD | SITE LIGHTING DIAGRAM



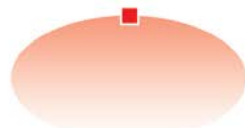
LEGEND



BAY TRAIL
PEDESTRIAN
POLE LIGHT



ACCESS DRIVE &
PARKING
POLE LIGHT



STREET LIGHT



PLAZA
SOFFIT LIGHT
(BUILDING MOUNTED)



GARDEN
ACCENT
LIGHTING



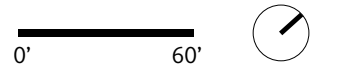
ART ACCENT
LIGHTING



WALL LIGHTS



BOLLARD LIGHT





THANK YOU