

BAY ADAPT

REGIONAL STRATEGY FOR A RISING BAY

BCDC Commission Briefing and Consideration of Contracts

January 19, 2023

Dana Brechwald, Assistant Planning Director for Climate
Adaptation

San Francisco Bay Conservation and Development Commission
dana.brechwald@bcdc.ca.gov

1

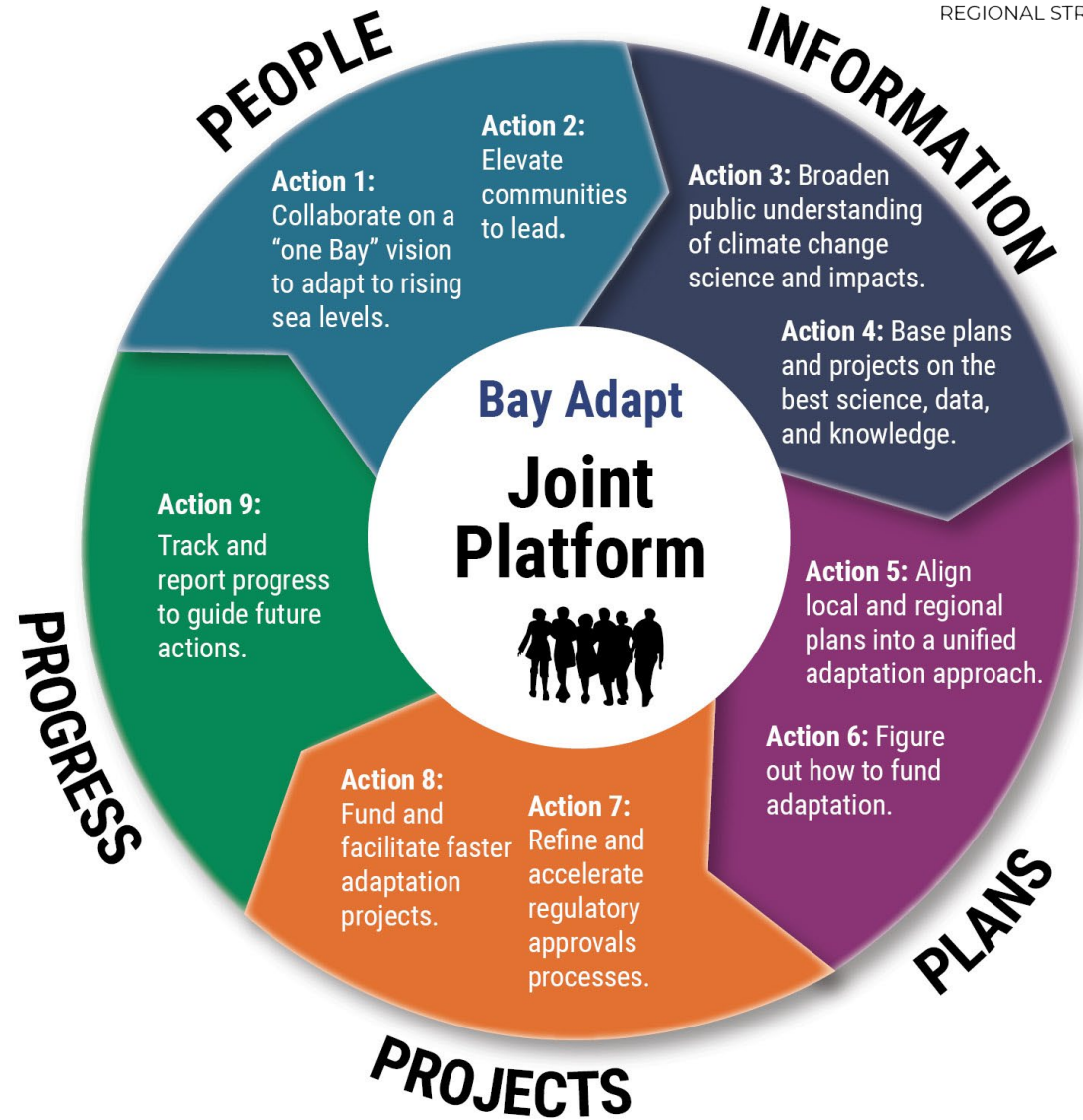
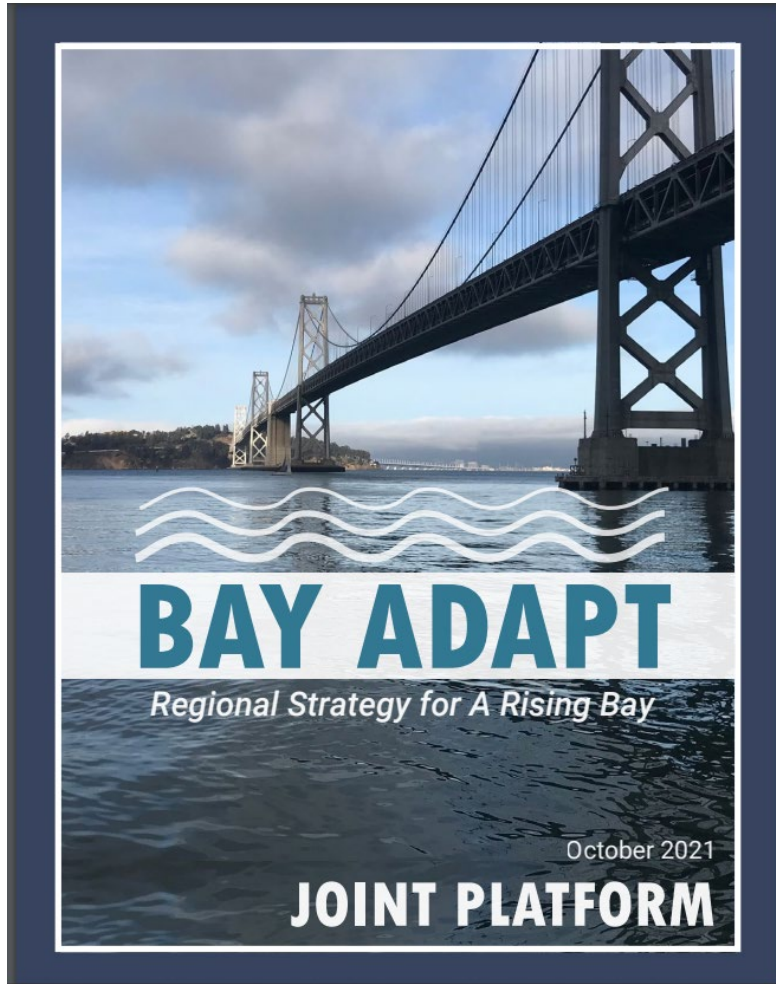
Background

2

Adaptation Plan
Contract

3

Backbone
Strategy Contract



BCDC Implementation **Initiatives**

1

Increasing
**Community
Capacity**

2

Regional
**Shoreline
Adaptation
Plan**

3

Regulatory
**Improve-
ments**

4

**Backbone
Agency
Strategy**

Increase in Bay Adapt Capacity



2,084,437 over 3 years from Ocean Protection Council



3,011,000 over 3 years from State Coastal Conservancy



Planning Assistant Director



Regulatory Assistant Director



Senior Environmental Scientist Specialist



Environmental Justice Lead



Data and Mapping Lead



Adaptation Analyst



EJ Advisors



Technical Mapping Support



Planning and Engagement Support



Communications and Facilitation

1

Background

2

Adaptation Plan
Contract

3

Backbone
Strategy Concept

Regional Shoreline **Adaptation** **Plan**

Regional **Shoreline Adaptation Plan**



Develop Regional Sea Level Rise
Adaptation Planning Guidelines



Guide creation of Sub-Regional
Implementation Plans with Local
Jurisdictions



Expand Online Platform for Regional
Shoreline Adaptation Plan and Project
Map

Adaptation Plan **Tasks**

1

Develop Regional Shoreline Adaptation Plan

- Background Research
- Regional Vision and Goals
- Regional Guidelines Topics
- Subregional Implementation Plan Structure and Incentives
- Final Regional Guidelines
- Subregional Implementation Plan Evaluation and Tracking

2

Community and Stakeholder Communications, Outreach, and Engagement

- Communications and Outreach Plan
- Meeting Development and Facilitation

3

Project Management and Coordination

- Equity Strategy
- Project Management Support

Mithun **Team**

- **Mithun:** team lead, with focus on physical/spatial planning, visualization, equity strategies, and project management
- **ERG:** regional-scale planning, policy, and governance through an equity-based lens
- **ESA:** technical planning and engineering, with project implementation pathway focus
- **Greenbelt Alliance:** community engagement, outreach, and relationship building

MITHŪN



Staff Recommendation (1)

Authorize the Executive Director to:

- Enter into an *up to* \$480,000 contract with Mithun to provide the Commission planning, communications, and outreach support to support the Bay Adapt Regional Shoreline Adaptation Plan over a period from January 20, 2023 (or upon approval) through June 30, 2024.
- Amend the contract if the amendment does not involve substantial changes in scope or exceed 10% of the total amount of the contract.

1

Background

2

Adaptation Plan
Contract

3

Backbone
Strategy Contract

Backbone Agency **Strategy**

1



Leadership and engagement

- Leadership Groups
- Working Groups to advance tasks
- Annual or semi-annual Regional Forums

2



Building **long-term equity** into processes and outcomes

3

Using **transparent metrics** to track progress and success

4



Communicating stories, metrics, and maintaining the Bay Adapt “brand”

Backbone **Tasks**



Greenbelt **Alliance Team**

- Provides skills in equitable climate resilience, convening diverse stakeholders, project management, facilitation, and equitable community engagement.
- Skilled in-house marketing and communications team that oversees marketing, branding, and social media.
- Sub-contract with **Connected to Place** to assist with strategic planning and meeting facilitation



Staff Recommendation (2)

Authorize the Executive Director to:

- Enter into an *up to* \$330,000 contract with Greenbelt Alliance to provide the Commission strategic leadership, communication, tracking, convening, metrics, and organization to support Bay Adapt backbone functions over a period from January 20, 2023 (or upon approval) through January 20, 2026.
- Amend the contract if the amendment does not involve substantial changes in scope or exceed 10% of the total amount of the contract.