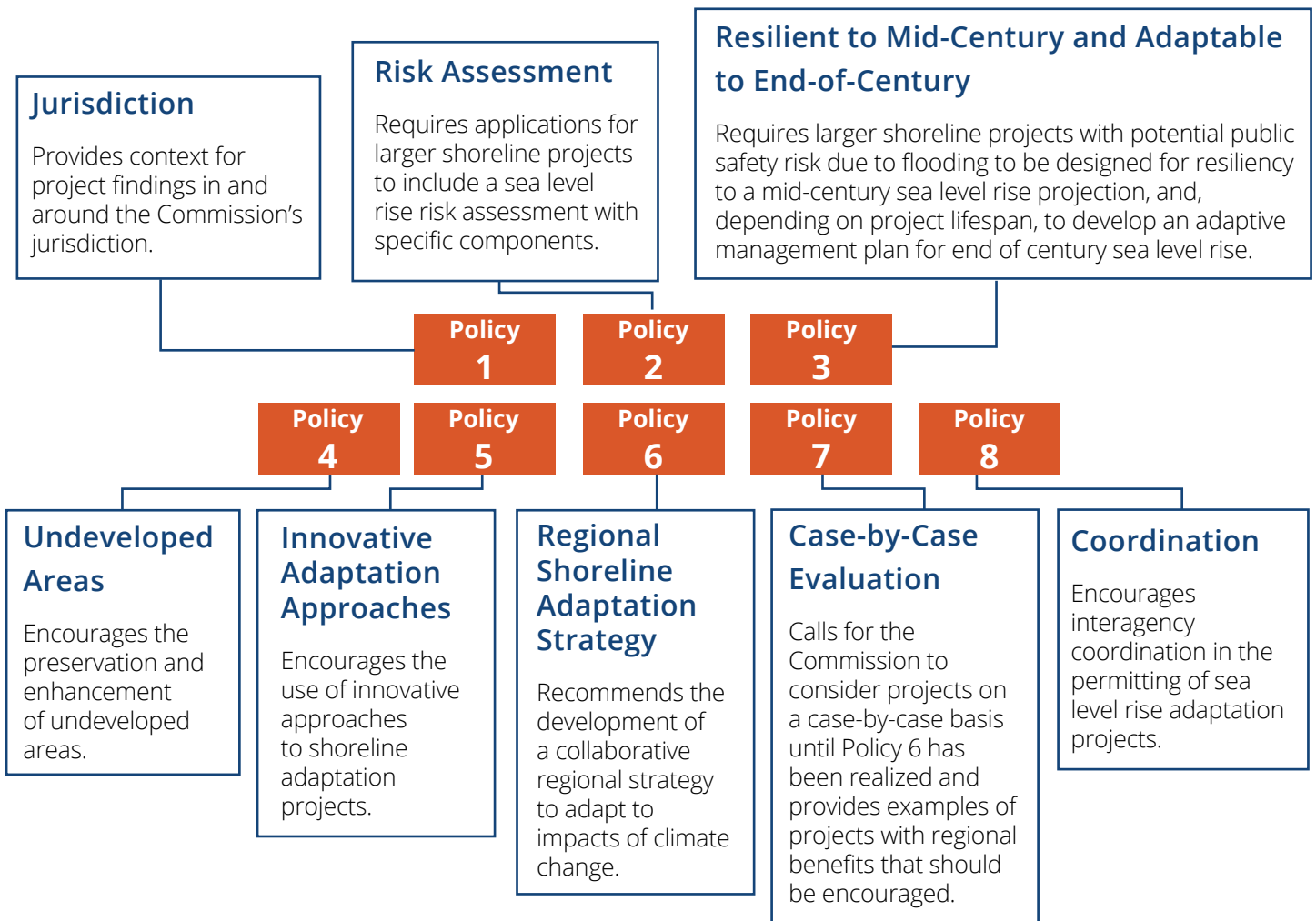


KEY TAKEAWAYS

THE BAY PLAN CLIMATE CHANGE AMENDMENT ADDRESSED THE NEED TO PLAN AND PREPARE FOR SEA LEVEL RISE

Climate change and sea level rise in particular will reshape the San Francisco Bay and its surrounding region. Sea level rise threatens the Bay's unique and critical ecosystems, public access to the shore and water, and developed areas including homes, ports, businesses, and other uses. In 2011, BCDC amended the San Francisco Bay Plan to add new policies and amend existing policies to include the authority to require climate change and sea level rise considerations for applicable projects, among other changes. The amendment addresses the need for resilience and adaptation on the San Francisco Bay and its shoreline through BCDC's permitting and planning authorities.



BAY PLAN POLICIES RELEVANT TO SEA LEVEL RISE ADAPTATION ARE PROVIDED AND DISCUSSED IN THE FOLLOWING CHAPTERS

The Climate Change Policies are summarized above and discussed in detail in [Section 2.3](#). Other related Policies are discussed in [Section 2.4](#). These related Policies allow for additional sea level rise considerations such as shoreline protection, public access resiliency, special considerations for habitat projects, or nature-based feasibility assessments.

THE CLIMATE CHANGE POLICIES DIRECT BCDC'S APPROACH TO ADAPTATION

The Climate Change Policies and the amended Policies in other sections of the Bay Plan range widely in scope. All Policies referenced in this report may be applied on a case-by-case basis to any project requiring a permit from BCDC. In most cases, the materials required as part of the permit application process will be adequate to enable BCDC staff to make the requisite findings and a recommendation to the Commission regarding a proposed project's consistency with respect to the Climate Change Policies. Contact BCDC staff to determine if a pre-application consultation is appropriate for your project.



The marina at Fisherman's Wharf. Source: BCDC Staff.

THIS GUIDANCE IS BASED ON A DECADE'S WORTH OF APPLICATION OF THE CLIMATE CHANGE POLICIES

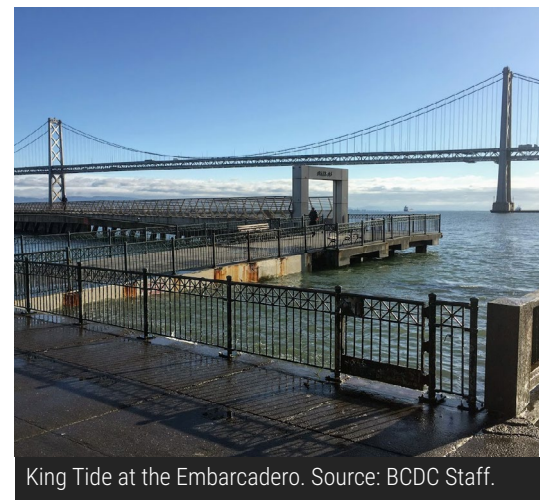
BCDC regulates a range of activities, from residential improvements to public access improvements, habitat restoration, dredging, and development of complex shoreline infrastructure; see [BCDC's Permitting Program](#). This guidance document is not a source of new regulations or processes, nor does it describe a step-by-step process for obtaining a permit. Prospective applicants are encouraged to consult BCDC staff to determine which Policies may apply to any project. A decade's worth of BCDC's permits were reviewed to provide example permit condition language for a variety of project types. Future projects may require new or innovative approaches to interpreting the policies and permitting projects that are not described in this Guidance. Readers are encouraged to review the examples to learn how the Commission has in past instances applied the Climate Change Policies in BCDC's permitting.



Wetland vegetation near the Bay. Source: BCDC Staff.

THIS GUIDANCE INCLUDES TECHNICAL RESOURCES AND INFORMATION FOR CONSIDERING SEA LEVEL RISE IMPACTS

This Guidance includes a range of resources that can be useful at various stages in adaptation planning and project design. It includes a primer on climate change science ([Appendix A](#)), as well as an overview of the advisory adaptation planning guidance, tools, and projects offered through BCDC's Adapting to Rising Tides Program ([Appendix B](#)). [Section 4](#) and [Section 5](#) provide an introduction to selecting climate scenarios based on the State of California's best available science, as well as information about different types of flooding and related coastal hazards.



King Tide at the Embarcadero. Source: BCDC Staff.