



2023 BCDC Summer Intern Presentation

SEPTEMBER 7, 2023

Ava Hawkins

Alessandra Mohar

Roxanne Wilkerson

Taleen Cochran

Olivia Reid

MEET THE INTERNS!



Ava Hawkins

4th Year at University of California, Berkeley

Environmental Justice Intern



Alessandra Mohar

2nd Year at Stanford University

Environmental Justice Intern



Roxanne Wilkerson

3rd Year at Sonoma State University

Adapting to Rising Tides Intern



Taleen Cochran

4th Year at University of California, Berkeley

GIS Intern



Olivia Reid

3rd Year at Syracuse University

Records Intern

AVA HAWKINS

EJ Team

Phoenix Armenta & Lita Brydie

Major: Environmental Policy
and Justice

Minor: Native American
Studies

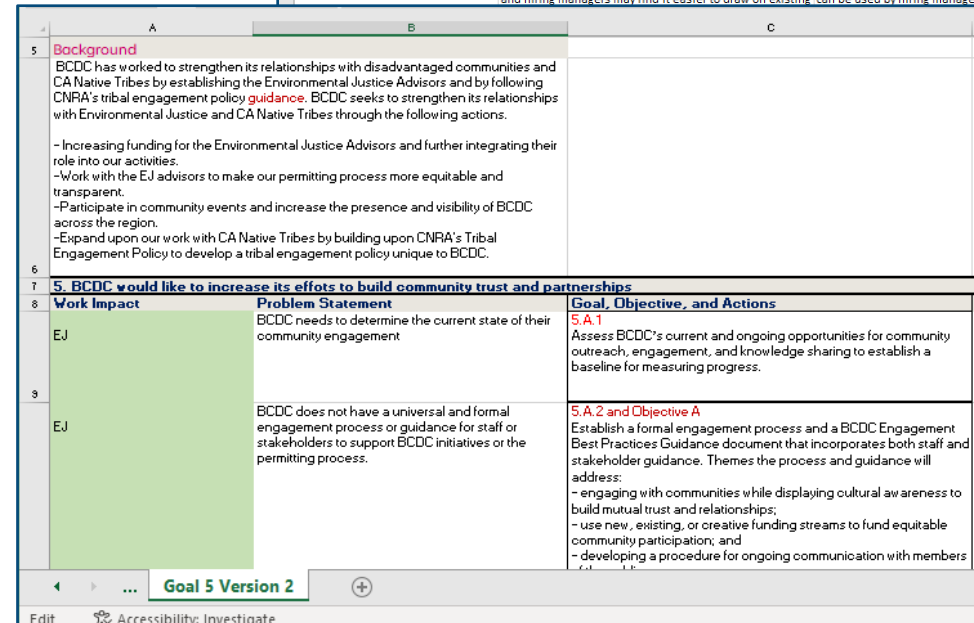
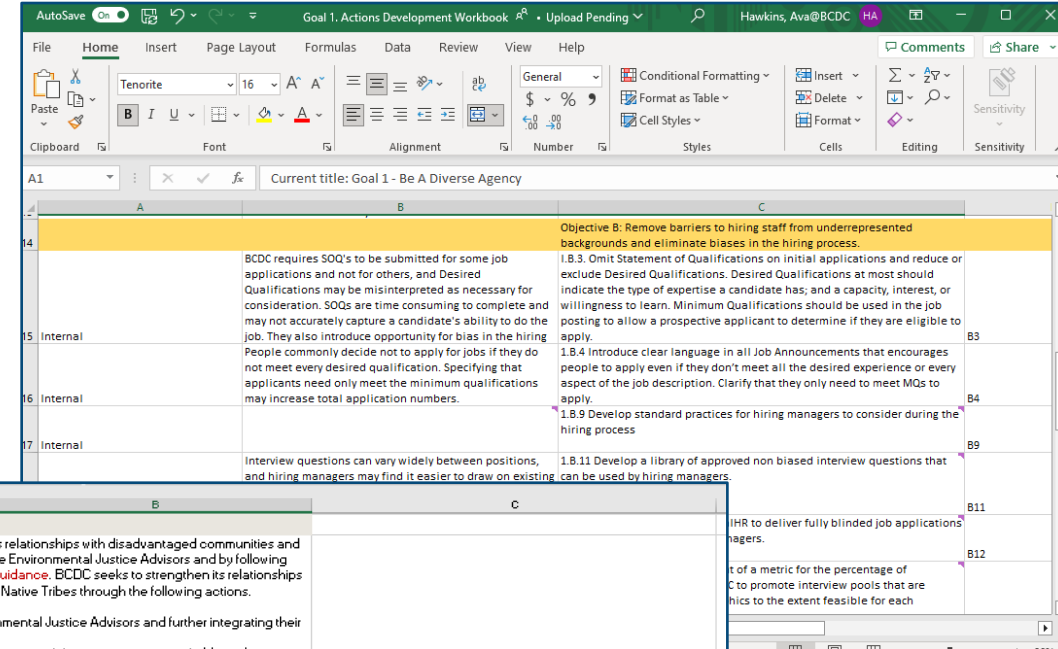
Interests: Traditional ecological
knowledge and environmental
racism

Hobbies: Cooking & baking,
hiking, watching the sunset



PROJECT 1: RACIAL EQUITY ACTION PLAN

- Streamlined plan through editing and combining of goals
- Summarized findings from commissioner workshop on racial equity and staff surveys to include in the introduction
- Cross checked goals and objectives with the embedding equity and strategic plans to prevent overlap



PROJECT 2: REGIONAL SHORELINE ADAPTATION PLAN



Working Agreements



UNDERSTAND THE DIFFERENCE BETWEEN INTENT AND IMPACT: Try to understand and acknowledge impact. Denying the impact of something said by focusing on intent is often more destructive than the initial interaction.



MOVE UP / MOVE BACK: Encourage full participation by all present. Take note of who is speaking and who is not. If you tend to speak often, consider "moving back" and vice versa.



PRACTICE MINDFUL LISTENING: Try to avoid planning what you'll say as you listen to others. Be willing to be surprised, to learn something new. Listen with your whole self.



SPEAK YOUR TRUTH IN WAYS THAT RESPECT OTHERS: Honor your own life experience by speaking your truth but recognize others may have different truths. Center your experience using "I" statements and trust other to do their own sifting and winnowing.



LEARN TO RESPOND TO OTHERS WITH HONEST, OPEN QUESTIONS: With such questions, we help "hear" each other into deeper speech.



YOU CHOOSE HOW YOU PARTICIPATE: You are invited to join this table in whatever capacity you are able, and to participate in whatever way is true for you.

- Worked with the RSAP equity subcommittee to develop working agreements
- Supported meeting planning and facilitation
- Attended advisory group meetings, giving me a general sense of the community's goals and desired outcomes for the plan

ALESSANDRA MOHAR

EJ Team

Phoenix Armenta & Lita Brydie

Major: Civil Engineering

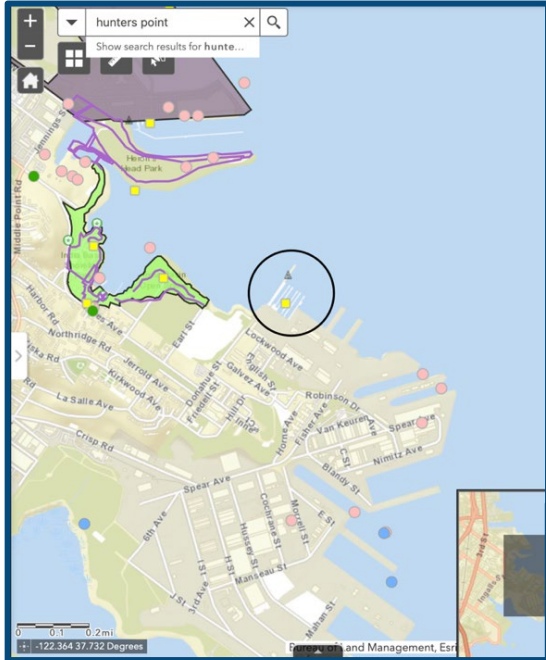
Interests: Sustainable Development and Equitable Housing

Hobbies: Music/Singing, Walking my dog, Watching Warriors' games, and Going to the beach with friends

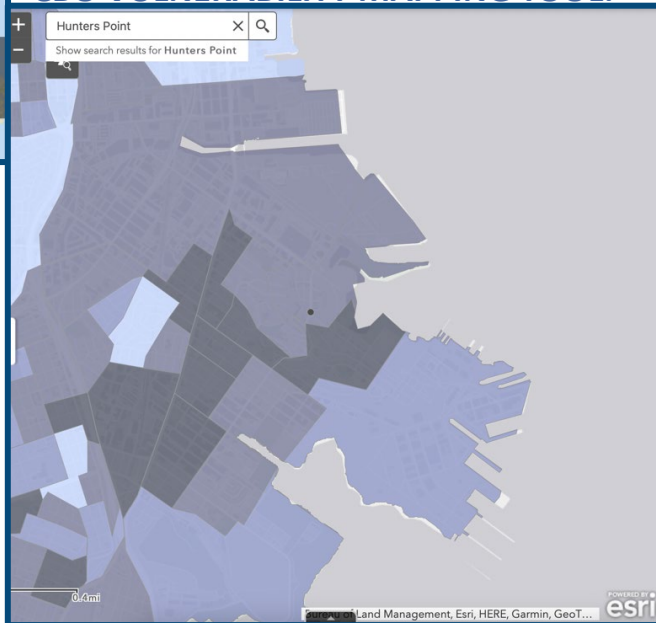


TOXIC TOUR RESEARCH

ENVIROSTOR:



CBO VULNERABILITY MAPPING TOOL:



Process:

- EJ Advisor Bios
- DTSC Envirostor
- CBO Vulnerability Mapping Tool
- Research Report (developed management questions)
- Presentation to EJ Advisors
- DTSC Outreach and being a point of contact between DTSC and EJ Advisor

OTHER PROJECTS AND HIGHLIGHTS

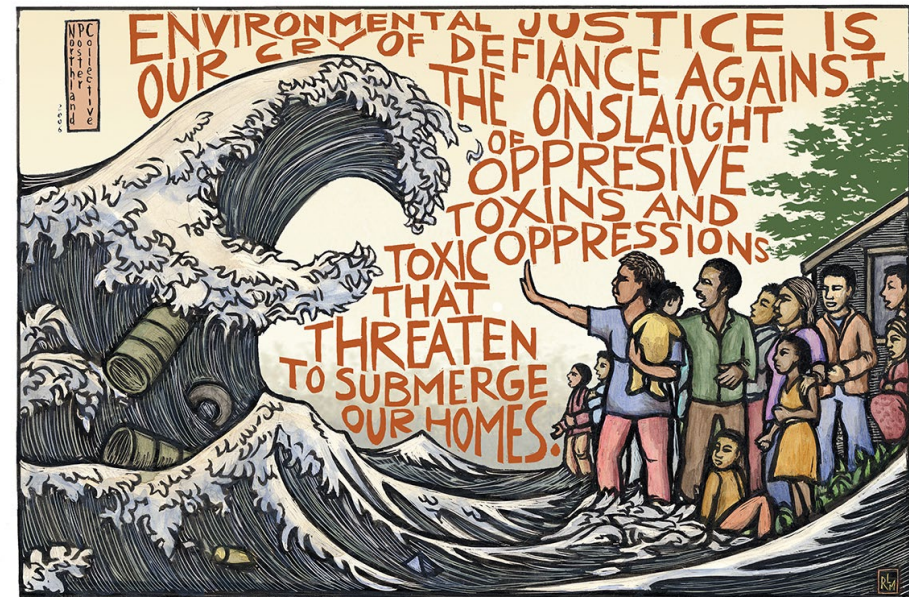
AVA

- Assisted with the beginning steps of implementing environmental justice procedures into the permitting process
- Drafted wording for a new translation services page on BCDC's website



ALLY

- Edited and organized outreach email templates for RSAP Tribal Engagement
- Drafted a PowerPoint presentation on the history of Environmental Justice for an All-Staff Training



EJ INTERNS: ALLY & AVA

- **Shoreline Leadership Academy**

- Reviewed previous Oakland Shoreline Leadership Academy curriculum
- Drafted outline of curriculum
- Coordinated site visits with partner organizations
 - Save the Bay Nursery
 - Judge John Sutter Park
- Created outreach materials

- **EJ Newsletter Template**



FLYER

REGIONAL SHORELINE LEADERSHIP ACADEMY

YOU'RE A COMMUNITY EXPERT, BECOME A SEA LEVEL RISE EXPERT

Oakland Shoreline Leadership Academy on a site visit to MLK Jr Shoreline (2021)

CONTACT
Phoenix Armenta @ BCDC
Email: phoenix.armenta@bcdc.ca.gov

• The Shoreline Leadership Academy is a six-month course designed to educate communities about sea level rise, groundwater rise, and shoreline rise, as well as other shoreline issues and potential solutions.

- Timeline: TBD
- Pay/benefits

QR code here

Use this QR Code to stay informed!

Screenshot of newsletter template on Canva

ROXANNE WILKERSON

ART Team

Todd Hallenbeck & Jaclyn Mandoske

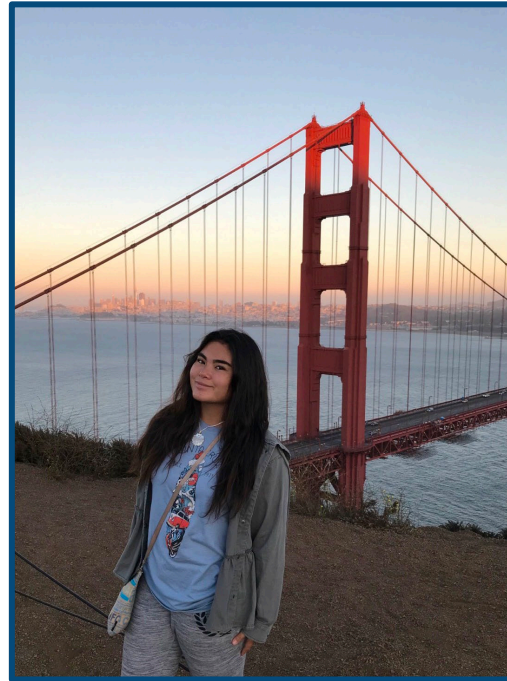
Major: Geography, Environmental Studies, & Planning

Focus: Environmental Systems

Minor: Sustainability

Interests: Restoration Ecology and Wildlife Conservation

Hobbies: Soccer, gardening, nature walks, & graphic design



REGIONAL SHORELINE ADAPTATION PLAN (RSAP) OUTREACH



• Researched Summer pop-up events

- Community demographics
- Recurring vs. one-time events
- Shoreline Adaptation Project Map (SAPMap)

• Researched table activity ideas

- Community engagement
- Effective communication strategies
- Collaborative mapping activity

RSAP Outreach Events - Summer 2023

	Event	Date(s)	Time	Location	Fee (\$)	Deadline	Tickets (\$)
1	Meet Me in the Street	Wed, Aug 9	5 - 8 pm	American Canyon	70	N/A	FREE
2	Oakland First Fridays	Fri, Sep 1	5 - 9 pm	Oakland	150	N/A	FREE
3	Art Walk SF Castro & Market St	Sat, Sep 2	12 - 5 pm	San Francisco	50	N/A	FREE
4	Chantey Sing at Hyde Street Pier	Sat, Sep 2	6 - 9 pm	San Francisco	N/A	N/A	FREE
5	Oakland Public Library Help For Renters	Sun, Sep 3	3 - 5 pm	Oakland	N/A	N/A	FREE
6	Pickleweed Library Ranger Storytime	Wed, Sep 6	10:30 am - 11:30 am	San Rafael	N/A	N/A	FREE
7	Vallejo Art Walk	Fri, Sep 8	5 pm - 9 pm	Vallejo	N/A	N/A	FREE
8	Dining Under the Lights	Fri, Sep 8	6 - 10 pm	San Rafael	100	N/A	FREE
9	Mare Island Dock of Bay Music Festival	Sat, Sep 9 & Sun, Sep 10	12:30 - 9:30 pm	Vallejo	N/A	N/A	95-250+Ferry
10	Ferry Building Gardeneur Plant Market	Sun, Sep 10	10 am - 4 pm	San Francisco	N/A	N/A	FREE

• My learning experience

- Expansion of geographical knowledge
- Understanding the value of time, place, and cost
- Simplifying and communicating complex concepts

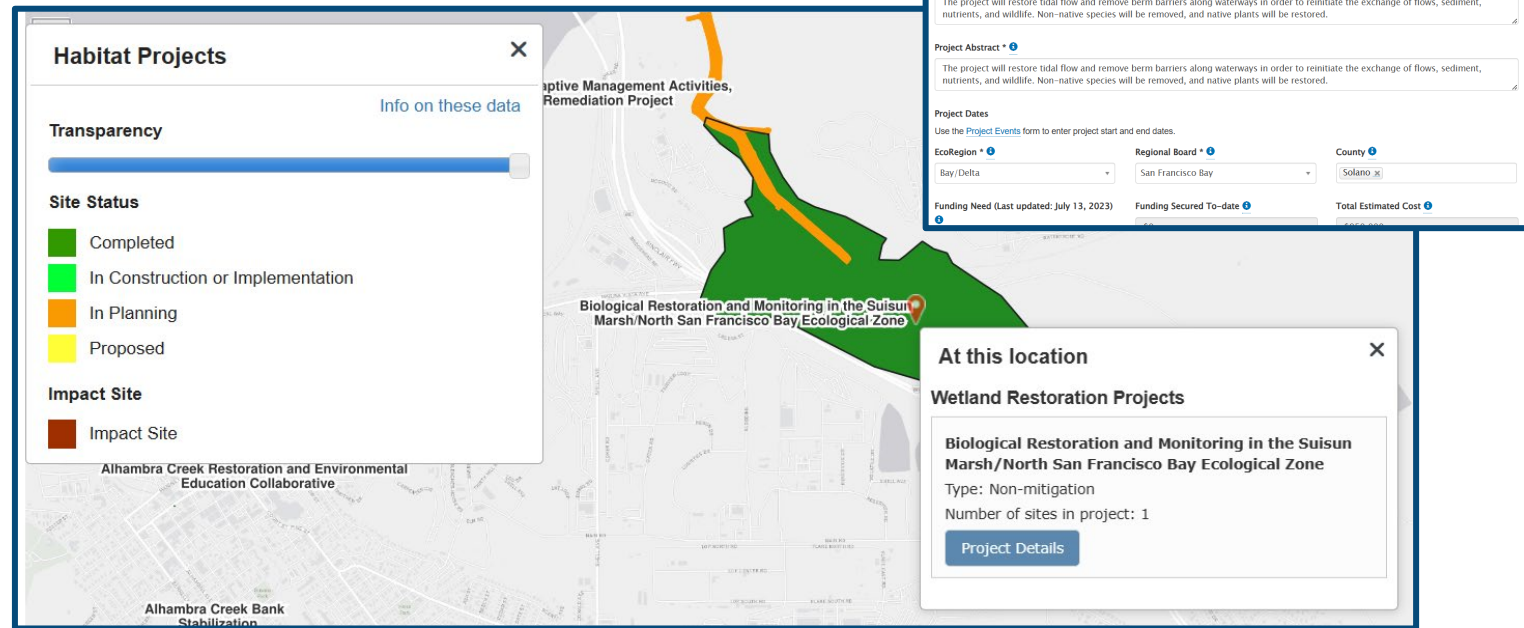
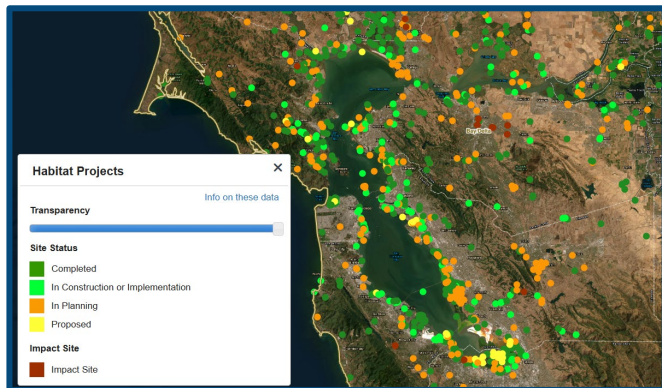
SHORELINE ADAPTATION PROJECT MAP (SAPMAP)

- Data entry for project updates
 - EcoAtlas Project Tracker
 - Uploaded site map files
 - Tracked progress and complications

- Communicated with partners
 - Identified project duplicates
 - Responded to feedback via email

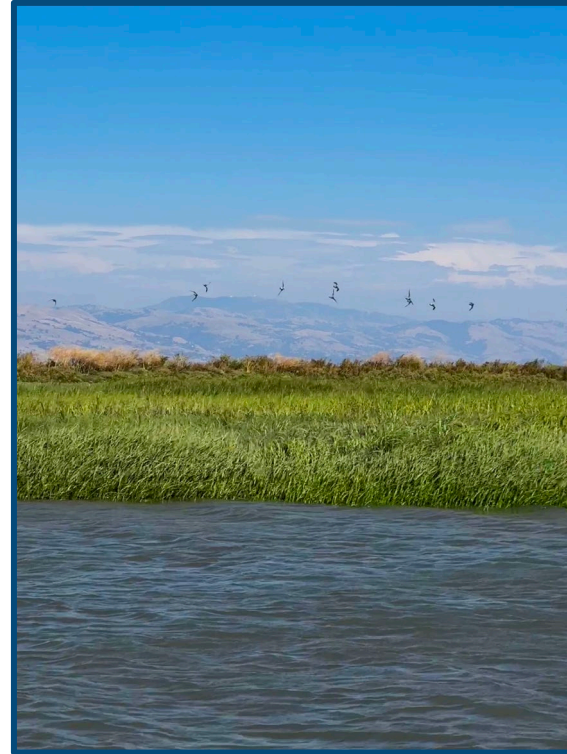
- My learning experience

- Increased spatial knowledge and attention to detail
- Concise project descriptions
- Improved with repetition



OTHER PROJECTS AND HIGHLIGHTS

- **Racial Equity Action Plan (REAP)**
 - Attended working meetings
 - Edited introduction text
- **Bay Adapt Blog Post**
 - Reflected on my experience at BCDC
 - Connected work with RSAP and SAPMap
- **UC Davis Policy Clinic**
 - Networking and Graduate school exploration
 - Excellent student presentations



UC DAVIS
Graduate Program of
Environmental Policy and Management



TALEEN COCHRAN

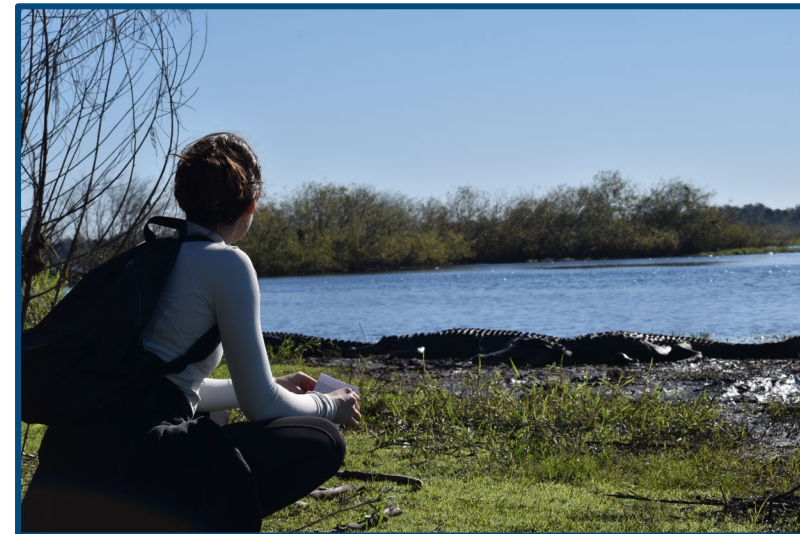
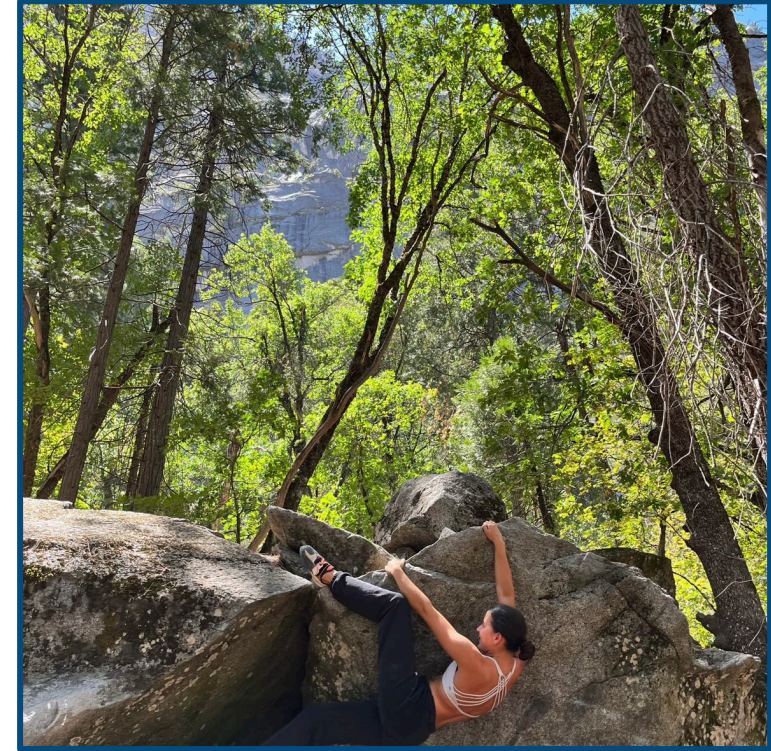
GIS Intern

Todd Hallenbeck

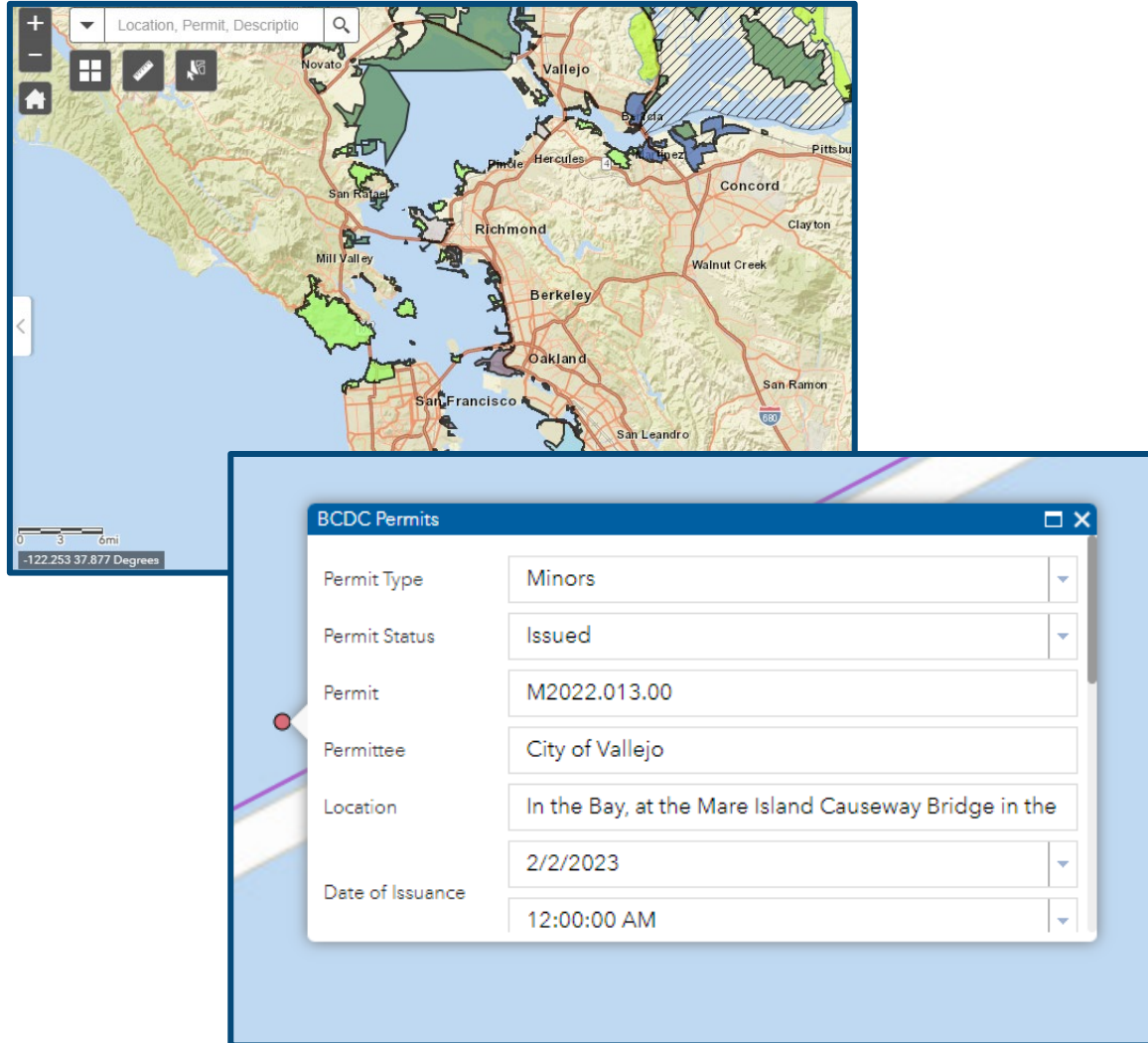
Major: Environmental
Engineering Science

Interests: Intersection of
technology and
environmentalism, habitat
restoration and conservation

Hobbies: Rock climbing, hiking,
traveling, eating



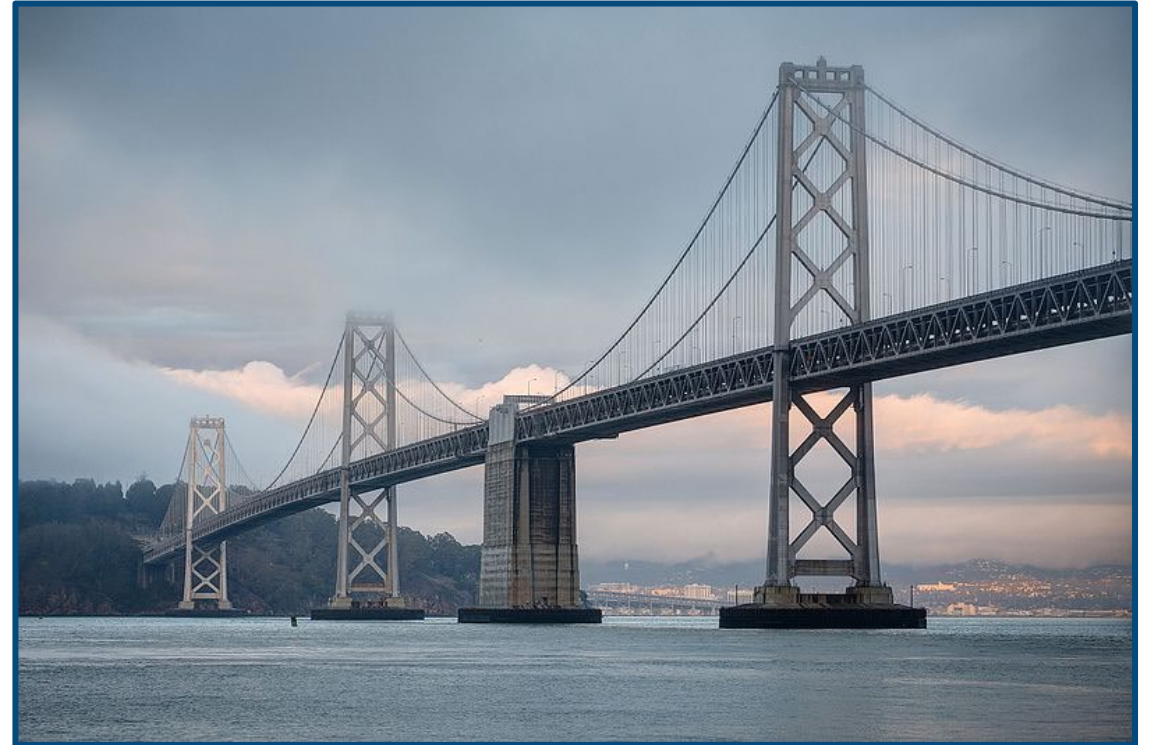
PROJECT 1: BAYRAT UPDATES



- BayRAT (Bay Resources Assessment Tool) is utilized by staff and contains permit & jurisdictional information
- Input issued permits into BayRAT to keep the map updated
- Identified errors and helped fill in missing attributes
- Learned basic GIS skills and familiarized myself with permit structure

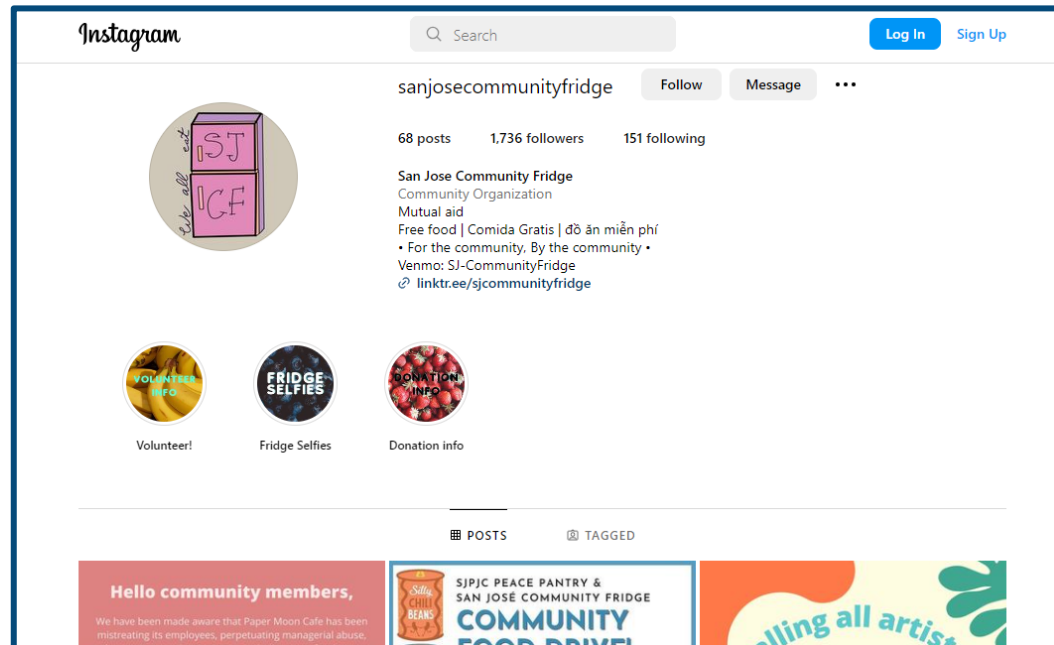
PROJECT 2: BAY FILL MAPPING INITIATIVE

- Focused on mapping projects with large amounts of bay fill
- Involves conducting research on older permits and tracking down projects that fit the criteria
- Contribute to jurisdictional mapping project SFEI is supporting
- Potential to lay groundwork for collecting this data in the future



OTHER PROJECTS AND HIGHLIGHTS

- CBO Directory updating with Ally
 - Involved a lot of Instagram and Facebook stalking
- Vallejo site visit and public access exploration



OLIVIA REID

Records Intern

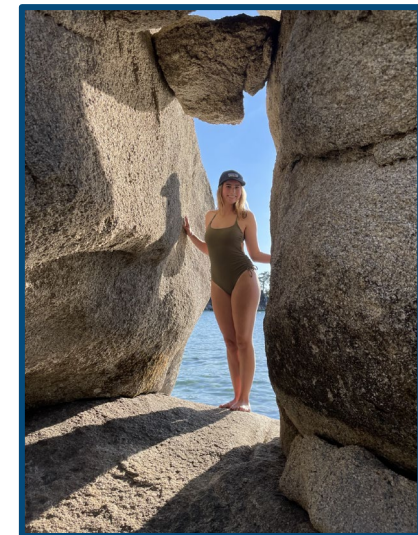
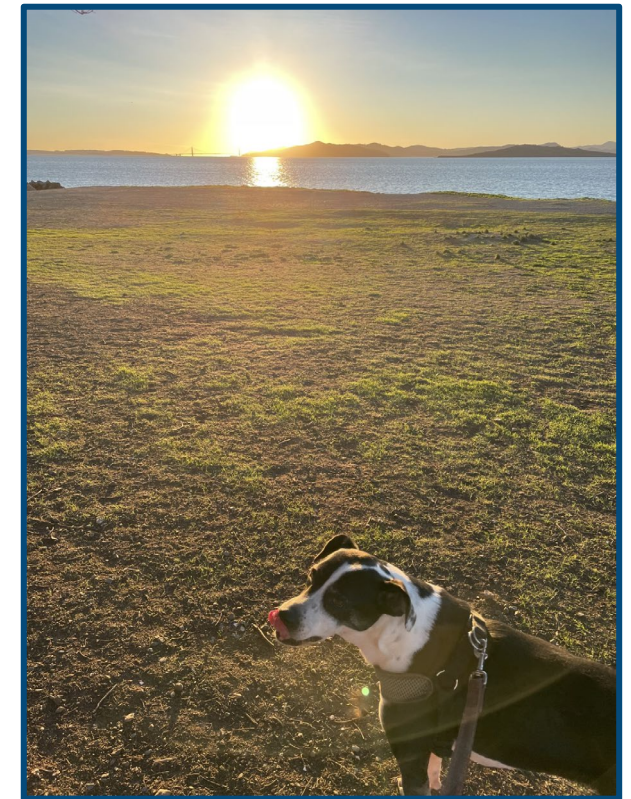
Angela Noble

Major: Policy Studies

Minor: Business

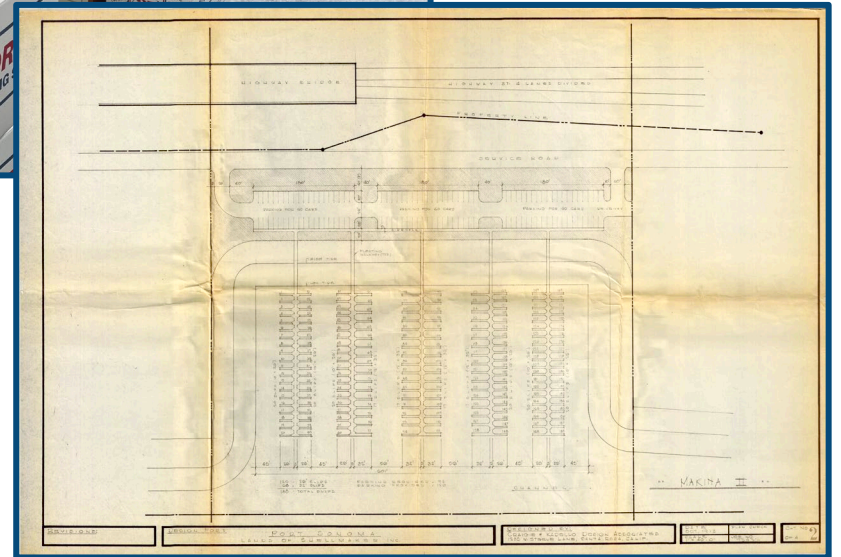
Interest: Sustainable
Development

Hobbies: Hiking, reading,
walking my dog, and going to
the beach



CLAIMS OF EXEMPTION

- Digitized and catalogued Claims of Exemption Records
- Ensured documents met Section 508 accessibility standards
- Created specific metadata for staff to easily navigate files



OTHER PROJECTS AND HIGHLIGHTS

- Updating Retention Schedules
- Intern Twitter Post



August 15, 2023

2/8/2021 Std. 73 - Governor's Office of Business and Economic Development Retention Schedule

**STATE OF CALIFORNIA - SECRETARY OF STATE
RECORDS RETENTION SCHEDULE**
STD. 73 (COMPUTER GENERATED 12/2020)

STATE RECORDS PROGRAM

(35) APPROVAL NUMBER S.237 GOVERNOR'S OFFICE OF BUSINESS AND ECONOMIC DEVELOPMENT										(36) 2021-02-08	
ITEM # (37)	CUBIC FEET (38)	CA. STATE ARCHIVES USE ONLY (39)	TITLE AND DESCRIPTION OF RECORDS (Double spaces between items) (40)	MEDIA (41)	VITAL (42)	RETENTION				PRA & IPA (47)	REMARKS (48)
						OFFICE (43)	DEPT. (44)	SRC (45)	TOTAL (46)		
(1) IS-39f-57	0	NOTIFY ARCHIVES	Test Inventory 1 Test Desc 1	P					1		Retention period starts when the record is first created or received.
(2) IS-0a8-92	1		Test Inventory 2 Test Desc 2	E					2.50		Retention period starts when the record is first created or received.
(3) IS-2ad-c7	2		Test Inventory 3 Test Desc 3	E					3		Retention period starts when the record is first created or received.
(4) IS-e8f-f5	3		Test Inventory 4 Test Desc 4	E					4		Retention period starts when the record is first created or received.

https://calrim-juliet-dev-jonivy330091.codeanyapp.com 1/3



PROGRAM HIGHLIGHTS

Staff
Retreat



Commission
Meetings

Lunch on the
Embarcadero



Salt
Marsh
Boat Trip



PROFESSIONAL DEVELOPMENT

Meet and Greets with commissioners and distinguished CNRA staff

Resume Reviews and Drafting an Elevator Pitch with Larry

Informational Interviews (coffee chats & lunches) with BCDC staff

PROGRAM STRENGTHS

1

**Professional
Development
Opportunities**

2

**Intern
Collaboration**

3

**BCDC Training in
Various
Departments**

PROGRAM RECOMMENDATIONS

1

**More Extensive
and Timely
Onboarding
Process**

2

**Increase Off-Site
Opportunities**

3

**Ensure Clear
Channels of
Communication
and Consistent
Check-Ins**

THANK YOU, BCDC!

Any Questions?



CONTACT INFORMATION



Ava Hawkins

Hawkiava000
@berkeley.edu

LinkedIn:
www.linkedin.com/in/avahawkins



Alessandra Mohar

mohar@stanford.edu

LinkedIn:
<https://www.linkedin.com/in/alessandra-moh>



Roxanne Wilkerson

roxakai18@gmail.com

LinkedIn:
www.linkedin.com/in/r-wilk



Taleen Cochran

taleencochran
@berkeley.edu

LinkedIn:
<http://linkedin.com/in/taleen-cochran>



Olivia Reid

oliviareid112@gmail.com

LinkedIn:
<http://linkedin.com/in/olivia-reid-95891621b>

CITATIONS

- Slide 12 – *Bay/delta* . EcoAtlas. (n.d.). <https://www.ecoatlas.org/regions/ecoregion/bay-delta>
- Slide 15 – *BayRAT Homepage & Edit Attributes Feature*. BayRAT. (n.d.). Retrieved July 24, 2023, from <https://bcdg.maps.arcgis.com/apps/webappviewer/index.html?id=84540b11ed0142dfb68c7997154519e5>
- Slide 16 – Wikimedia Commons. (2013, November 26). *Oakland Bay Bridge Western Part*. Wikipedia. Retrieved July 27, 2023, from https://commons.wikimedia.org/wiki/File:Oakland_Bay_Bridge_Western_Part.jpg
- Slide 20 - Ivy, J. (n.d.). *About CalRIM.app*. Retrieved July 27, 2023, from <https://www.calrim.app/about.php>