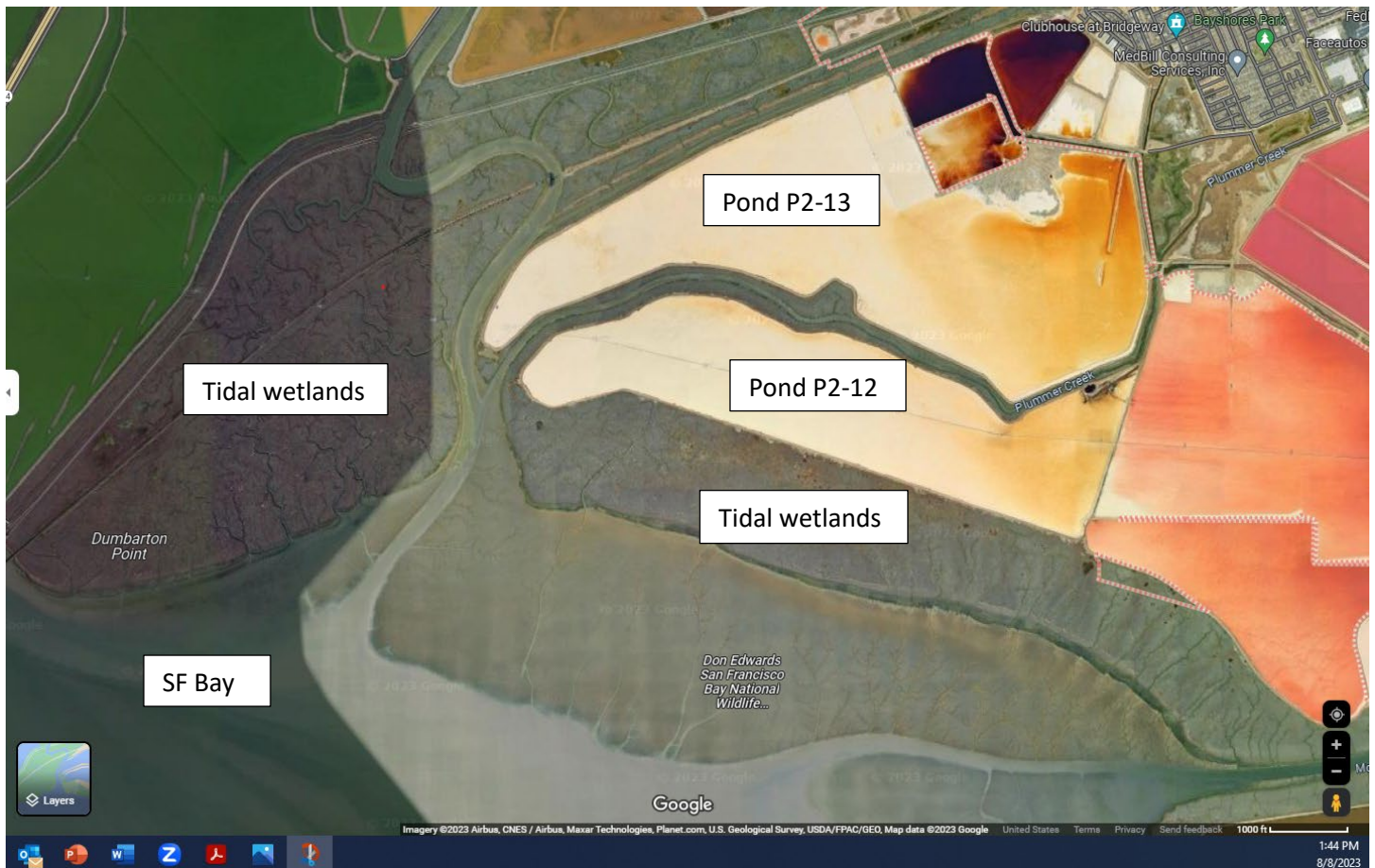


# ATTACHMENT A – PHOTOS TAKEN JUNE 7, 2023 BY JENN HYMAN, BCDC OF PONDS P2-12 AND P2-13

Photo 1. This aerial photo, downloaded from Google Maps on 8/8/23, shows the tidal wetlands surrounding Ponds P2-12 and P2-13, probably at low tide.



**POND P2-13 PHOTOS**

Photo 2. East end of canal on the north side of Pond P2-13, with pond berm on the right. The black pipeline is a Cargill process pipeline.





Photo 3. Looking east with the former barge canal on the left and Pond P2-13 on the right. This berm is drivable only during dry weather.





Photo 4. The brown bare spot in the wetland previously showed potential indications of a seep through the berm of Pond P2-13, which Cargill addressed through keying (berm coring).





Photo 5. This photo shows the side cast from keying (berm coring) placed on the pond side of the berm at Pond P2-13. The pond has rainwater in it from the previous very rainy winter. The crystallized, solid mixed sea salts are visible at the edge and a few inches under the surface of the pond.





Photo 6. Example of interior berm riprap in Pond P2-13.





Photo 7. The Pond P2-13 lock, circled in blue. It has not been used in a very long time and has been taken over by tidal marsh.





**POND P2-12**

Photo 8. The outboard berm of Pond P2-12. It is drivable only during dry weather.





Photo 9. The outboard berm at Pond P2-12 showing the extensive tidal wetlands.

