

TOXICS TOUR VISIONING

BCDC EJ Advisors





**BY INVITING BCDC STAKEHOLDERS INTO
OUR COMMUNITIES, WE ARE EMBODYING
LEADERSHIP AND LEVELING THE PLAYING
FIELD OF PERCEIVED POWER DYNAMICS.**

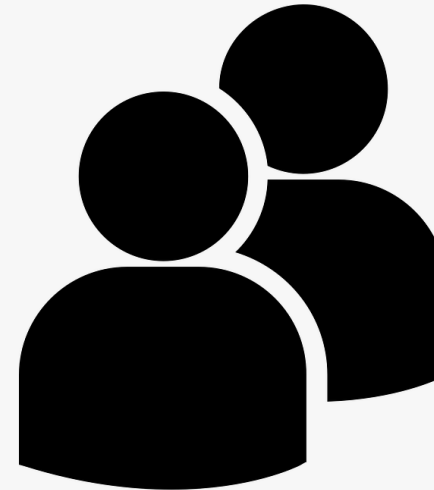
THE TOXICS TOUR SHOULD BE...

**A pilot
Institutional
Devoid of tokenization**

WHO ATTENDS?

Pilot - Phase I

Phase II



BCDC

Commissioners

BCDC

Senior Staff

BAQMD, CARB

Officials

CBOS

Leadership

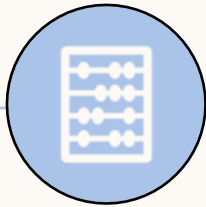
WHEN FOLKS ATTEND THE TOXICS TOUR, WE WANT THEM TO FEEL.....

- What the community is going through
- Like they have forgotten certain areas of cities
- Empathy
- A sense of accountability
- Compassion
- Like they CAN do something
- They HAVE to do something about this
- Embarrassed
- Aware
- Responsible
- Inspired

CONTINUING A LEGACY

- All Positives Possible – Vallejo
- Literacy for Environmental Justice – South San Francisco
- Youth United for Climate Action – East Palo Alto
- West Oakland Environmental Indicators Project – West Oakland
- West County Toxics Coalition – Richmond
- Bay Area Air Quality Management District + CARB - Vallejo

HOW WE GET THERE



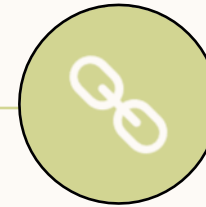
BUILD ON OUR VISION

- What are the parameters of this tour?
- Given funding, what is possible?



LEARN BEST PRACTICES FROM EJ LEADERSHIP

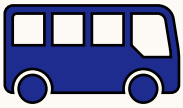
- Tap into conversations with EJ leaders who have hosted similar tours in the past—what went well? What could be improved for BCDC?



LAND FUNDING

- We'll need \$\$\$ in order to fund our time, staff time, and/or external support time to make this happen. The coordination of a Toxics Tour is outside the work of our & Phoenix's role.

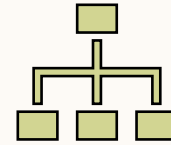
COST CONSIDERATIONS



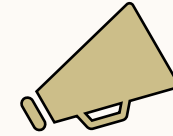
Transportation



Meals



Staff, Event Planning
fees



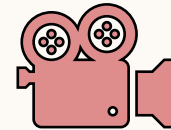
Speakers, Community
Org Honoraria



Accessibility



Liability Insurance



Film, Photography



Marketing

NEXT STEPS

- **Format exploration**
 - Ability to span a wide swath of geographic area
 - Live broadcasts
 - Diversity of sites
 - Multiple formats – speakers, panels, conversations
- **Pursue funding**

THE EJ ADVISORS PROGRAM: ORGANIZATIONAL DEVELOPMENT UPDATE

PHOENIX ARMENTA

EJWG JUNE 1, 2023

CONTEXT

- The EJ Advisors Program has accomplished two years of programming.
- The EJ Advisors Program has seen many successes and challenges over those 2 years.
- BCDC is seeking an Organizational Development Consultant to conduct an analysis of the EJ Advisor Program and help to design the program for maximum impact.

GAPS IN THE RELATIONSHIP BETWEEN EJ ADVISORS AND BCDC

- Communication
- Understanding BCDC
- How to Make an Impact
- Lacking Support

DESIRED OUTCOMES

- Clearly define the EJ Advisors role and authority within the BCDC and Commission process.
- Collaboratively develop operating protocols that work for the group.
- Effectively engage with BCDC in order to make change at the agency.
- An independent review and facilitation can help BCDC, Commissioners, and EJ Advisors effectively move our shared goals forward.

CONSULTANT QUALIFICATIONS

- Experience with organizational development within the context of a government agency
- An understanding of Equity and JEDI principles
- Knowledge of Environmental Justice and experience working with EJ communities, CBOs, and institutions
- Good facilitation skills

SCOPE OF WORK

- Work with EJ Advisors, BCDC Staff, and Commissioners in order to evaluate the gaps and needs for the program going forward.
- Co-develop and facilitate organizational development workshop(s).
- Develop a set of systems and procedures to more effectively engage in our work as a team.
- Develop solutions to strengthen the relationships between the EJ Advisors, BCDC staff, and Commissioners.
- Produce a report with recommendations at the end of the process and present it to the EJ Advisors and the Commission.

QUESTIONS TO CONSIDER

- Are we missing anything?
- Did we identify the right qualifications for the consultant?
- Does the initial list in the Scope of Work reflect the feedback you've given BCDC staff?

THANK YOU



Phoenix.Armenta@bccdc.ca.gov



www.bccdc.ca