

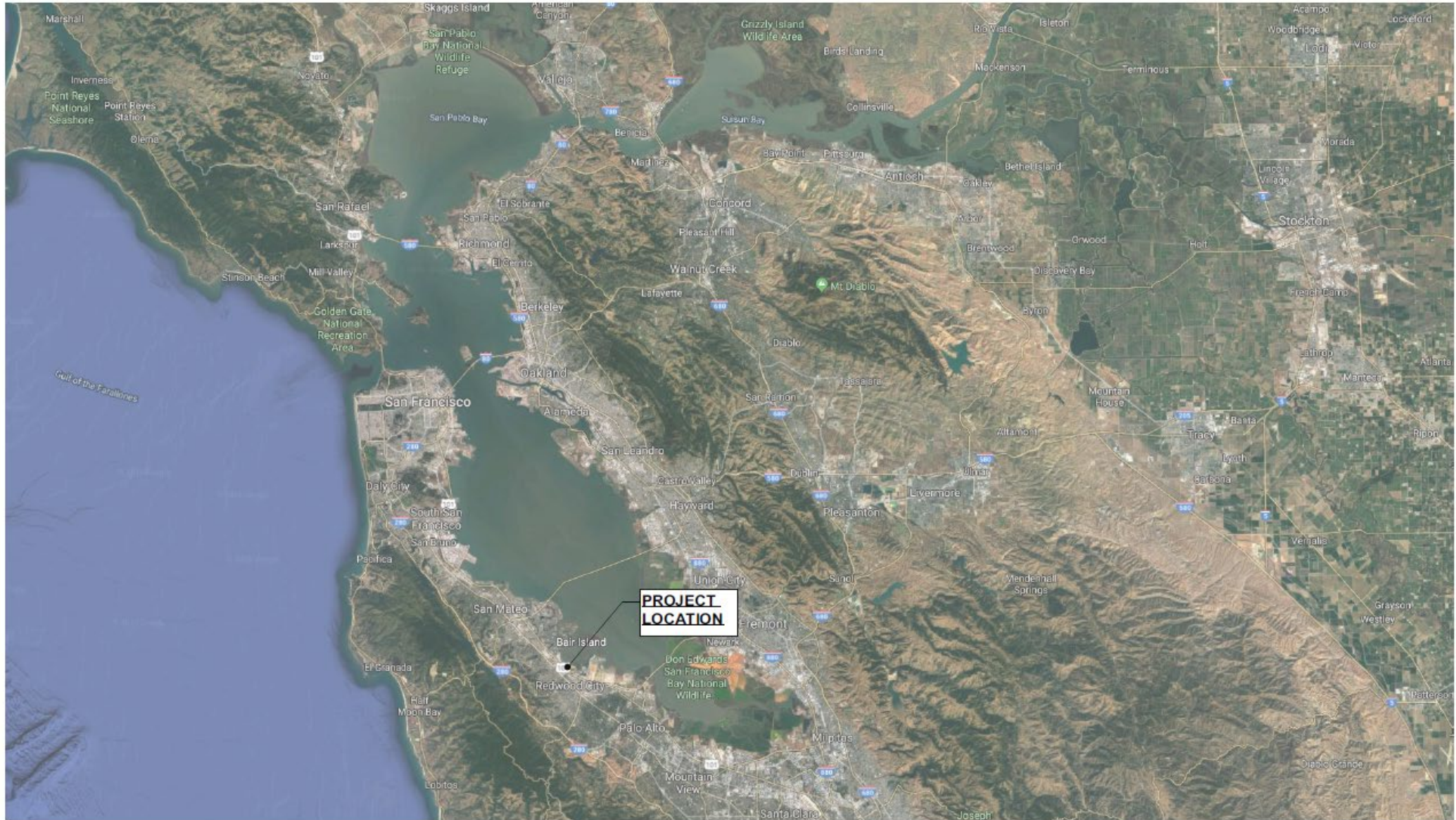
BCDC Presentation

June 1, 2023

557 East Bayshore Road
Redwood City



REGIONAL VICINITY MAP



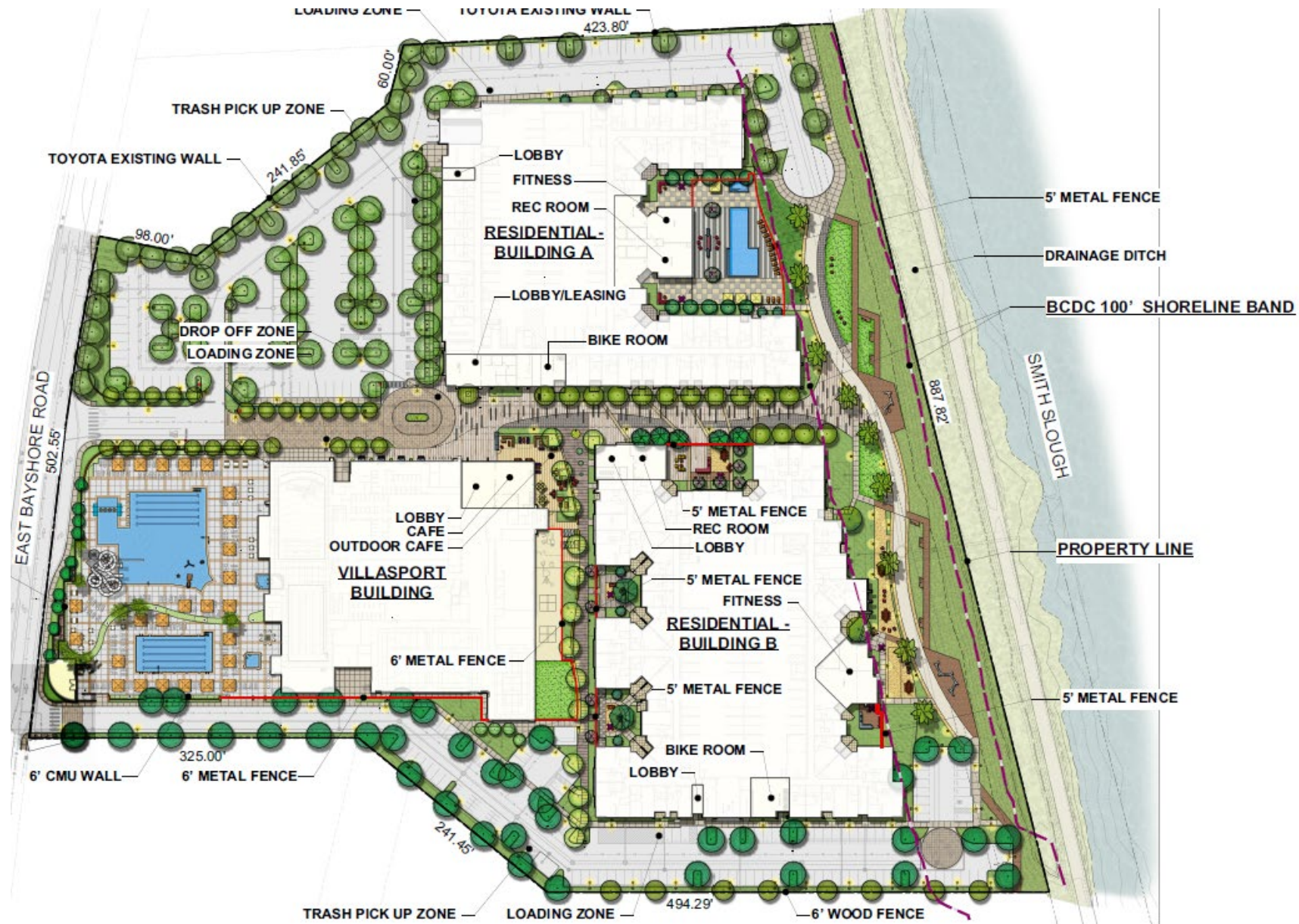
SITE ADJACENCIES



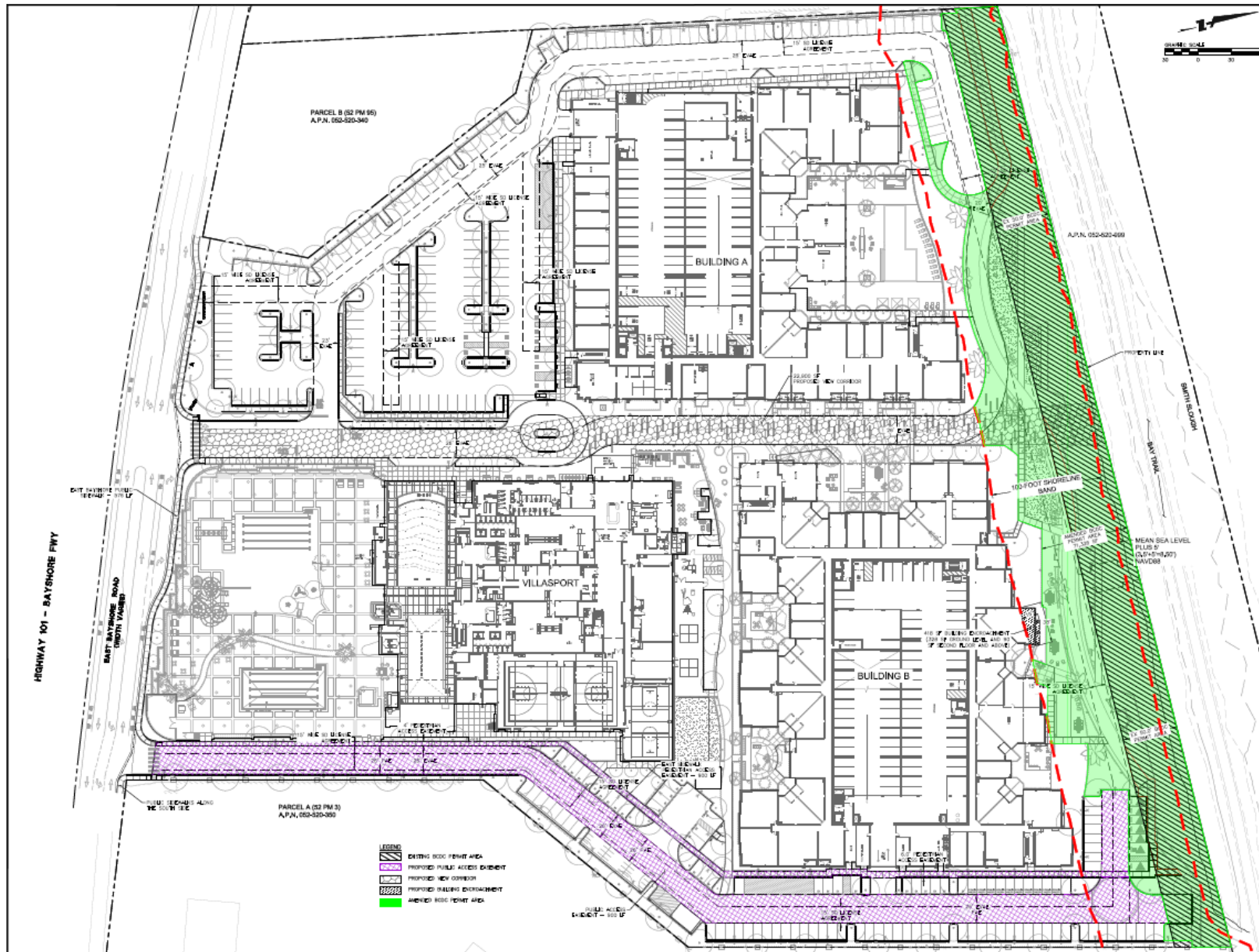
EXISTING SITE MAP



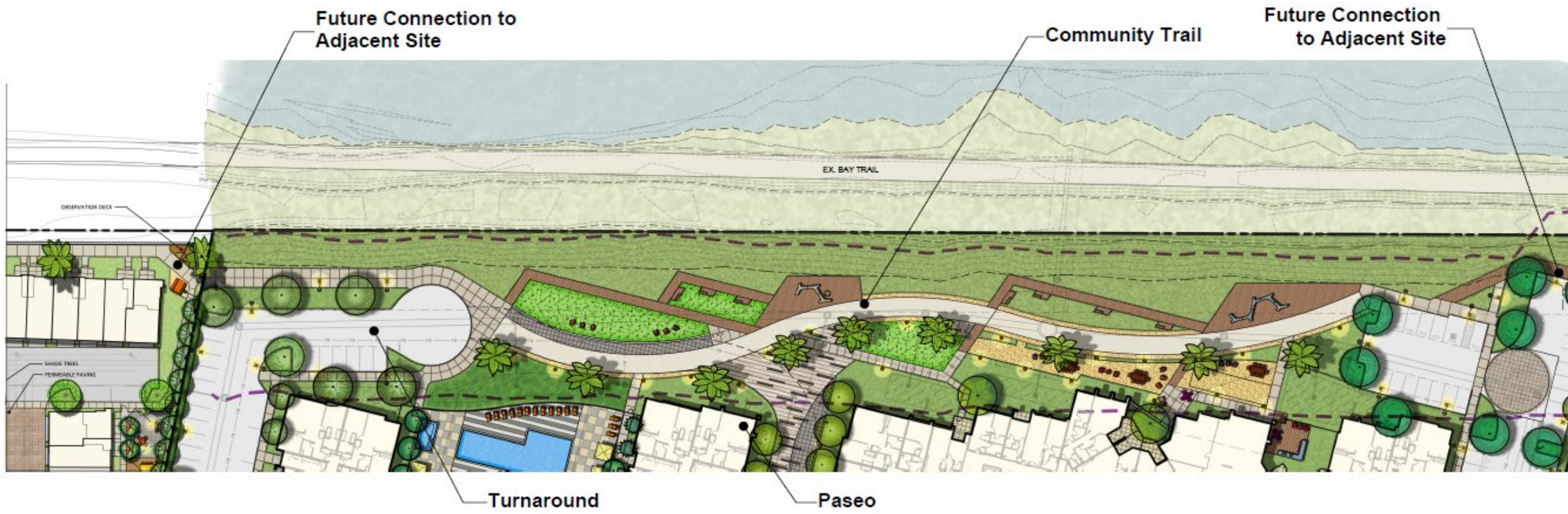
SITE AND LANDSCAPE PLAN



BCDC DEDICATED AREA AND ACCESS EASEMENTS



FUTURE CONNECTIONS TO COMMUNITY TRAIL

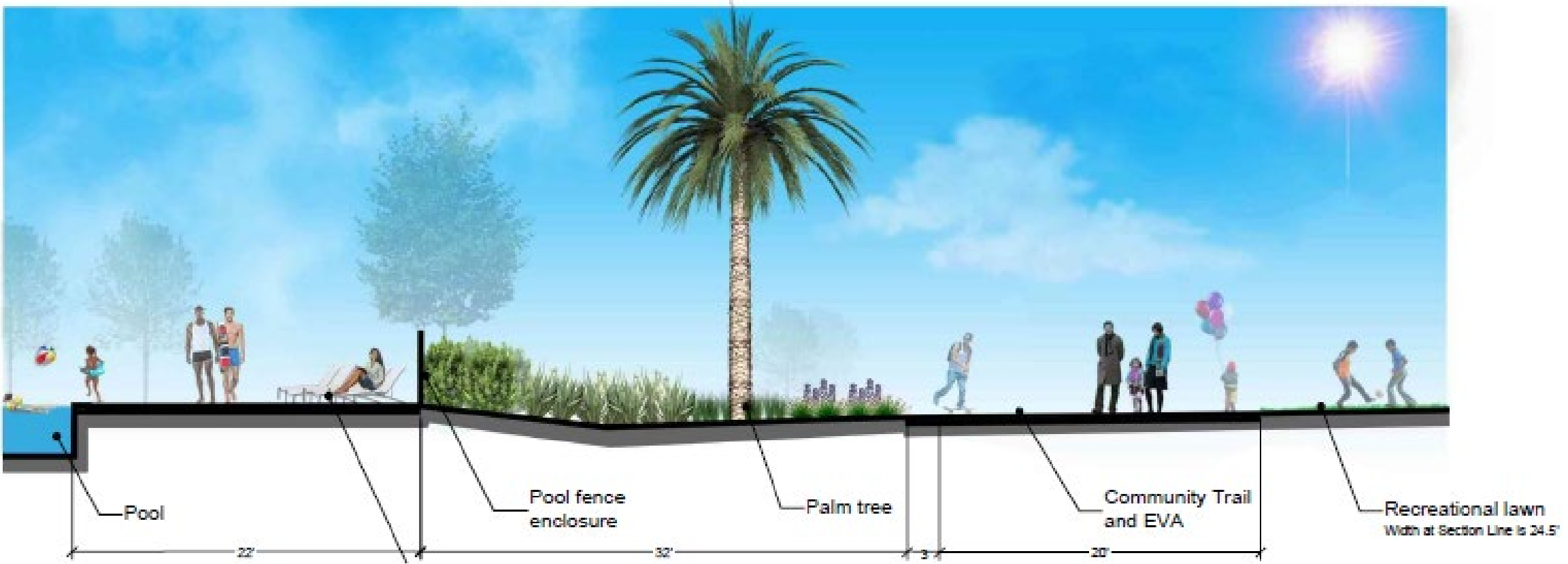


SHORELENE PLAN – DETAILED VIEW 1





SHORELINE CROSS SECTION 1

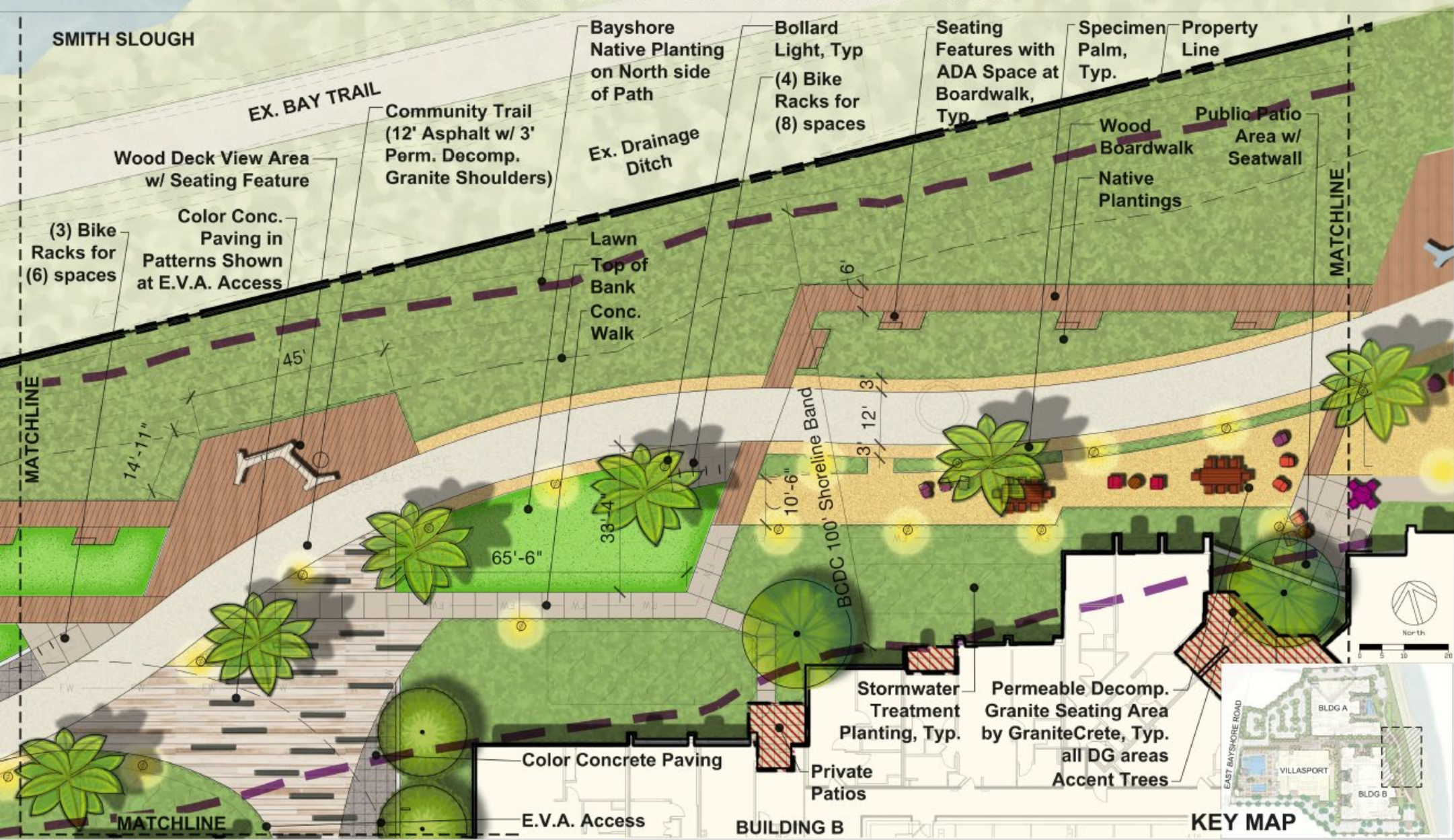




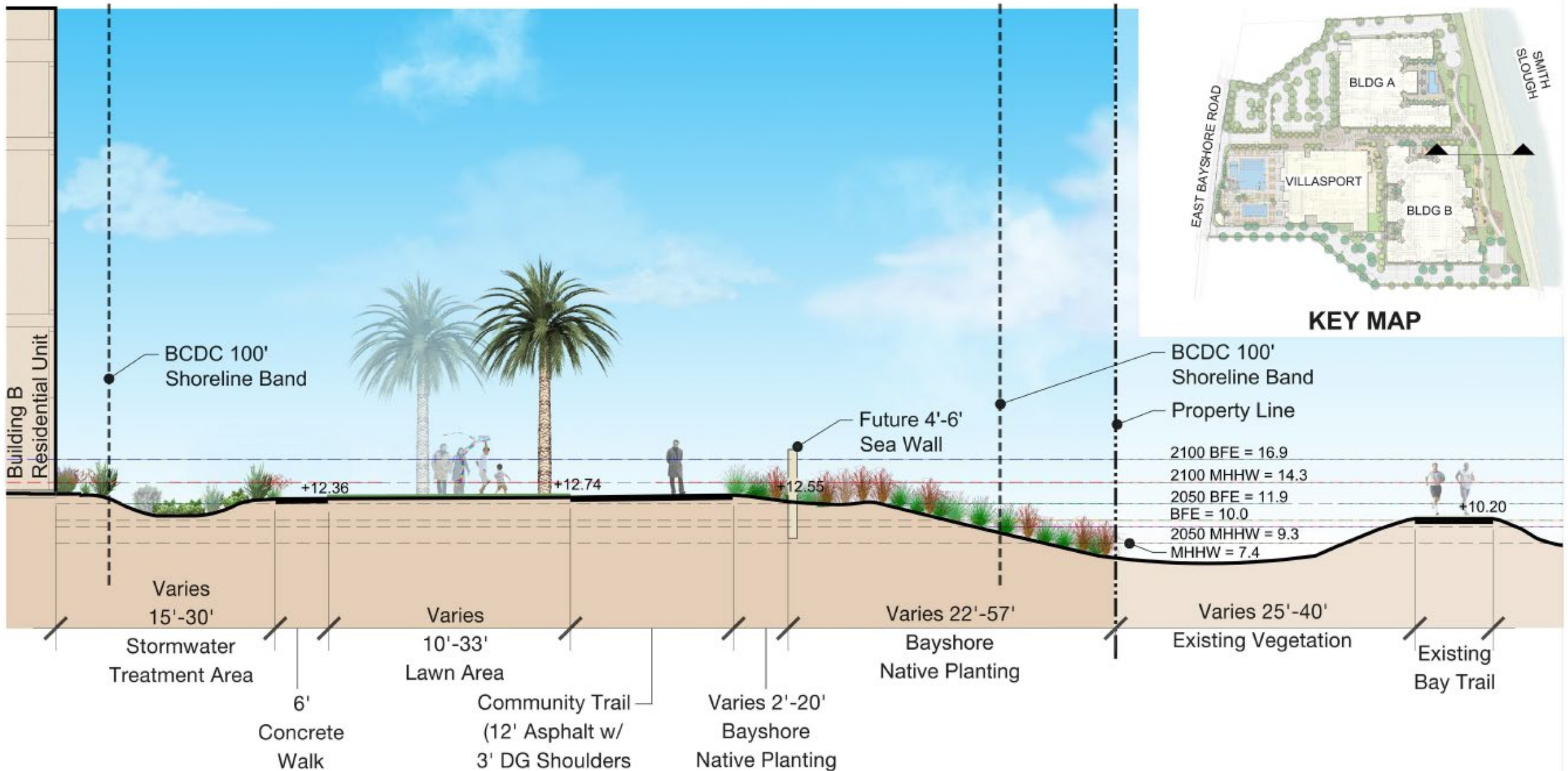
VIEW OF BUILDING A ALONG SHORELINE OPEN SPACE



SHORELENE PLAN – DETAILED VIEW 2



SHORELINE CROSS SECTION 2





SHORELINE VIEW 2



SHORELENE PLAN – DETAILED VIEW 3

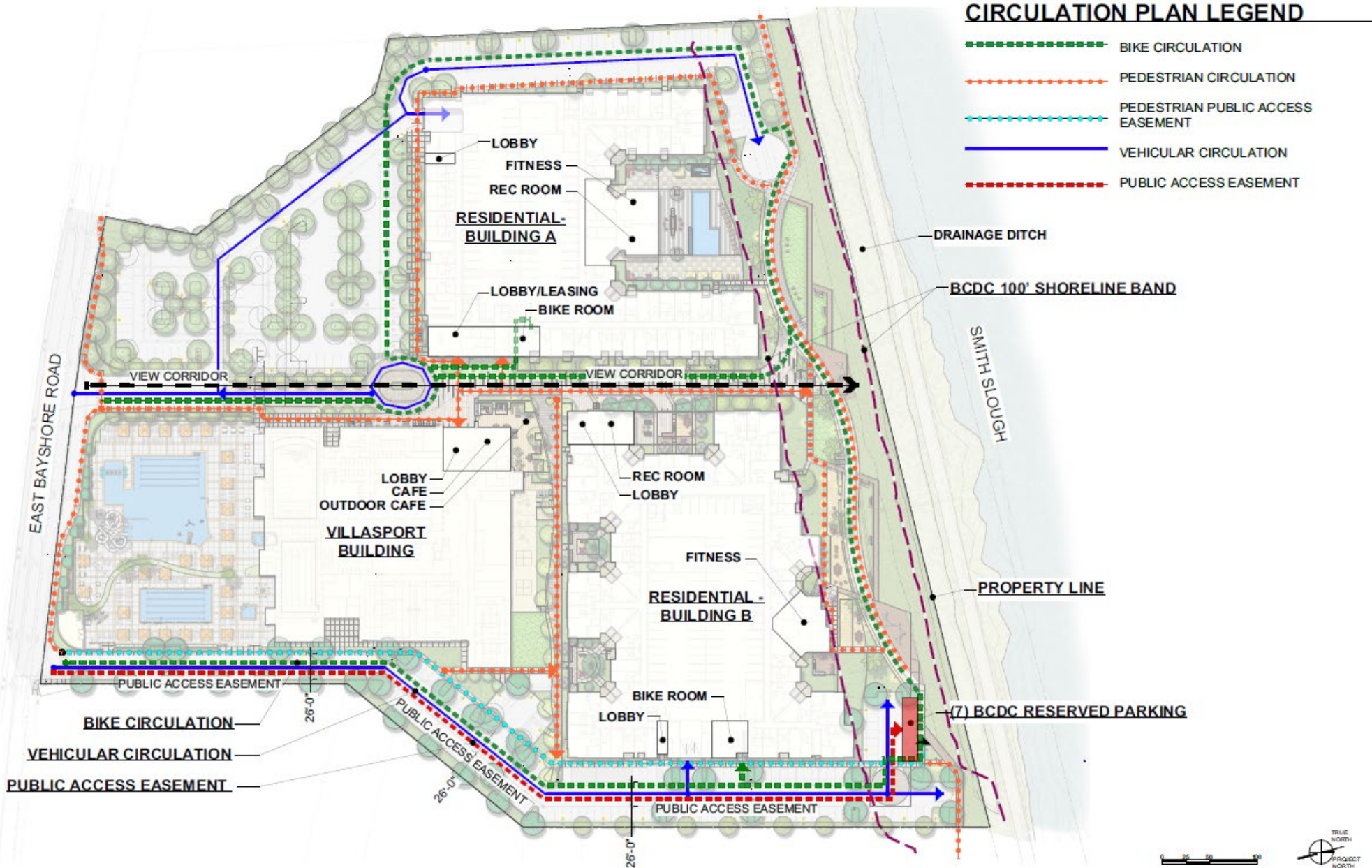




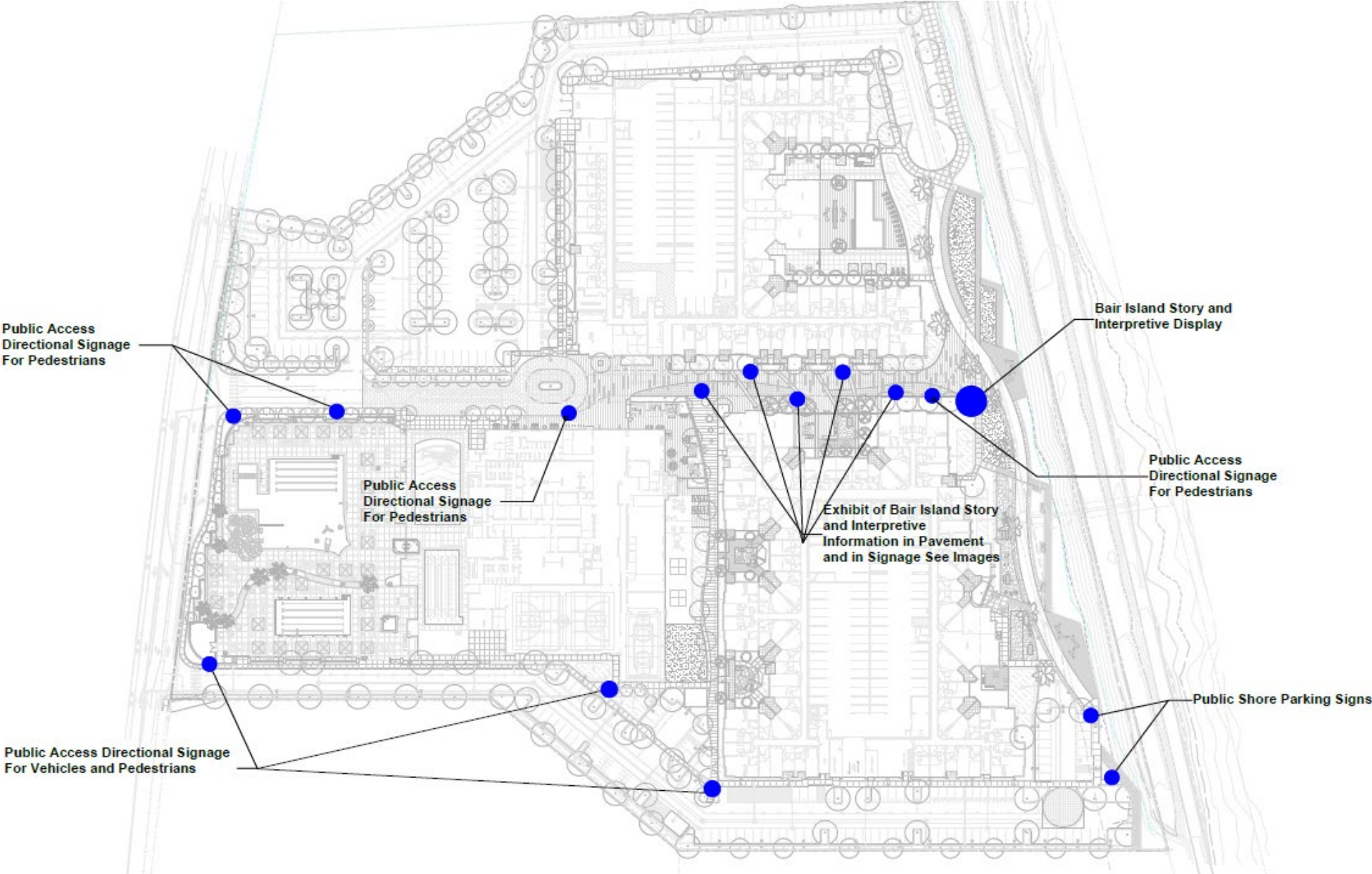
VIEW OF BUILDING B ALONG SHORELINE OPEN SPACE



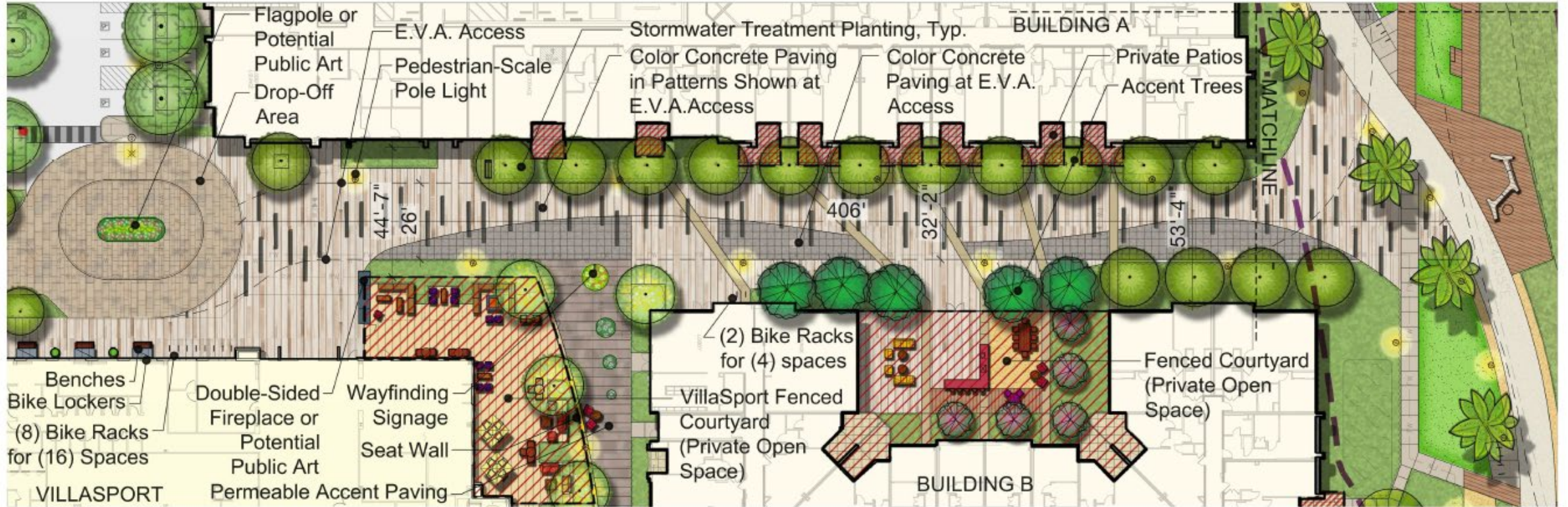
SITE ACCESS



BCDC ACCESS WAYFINDING SIGNAGE CONCEPT PLAN

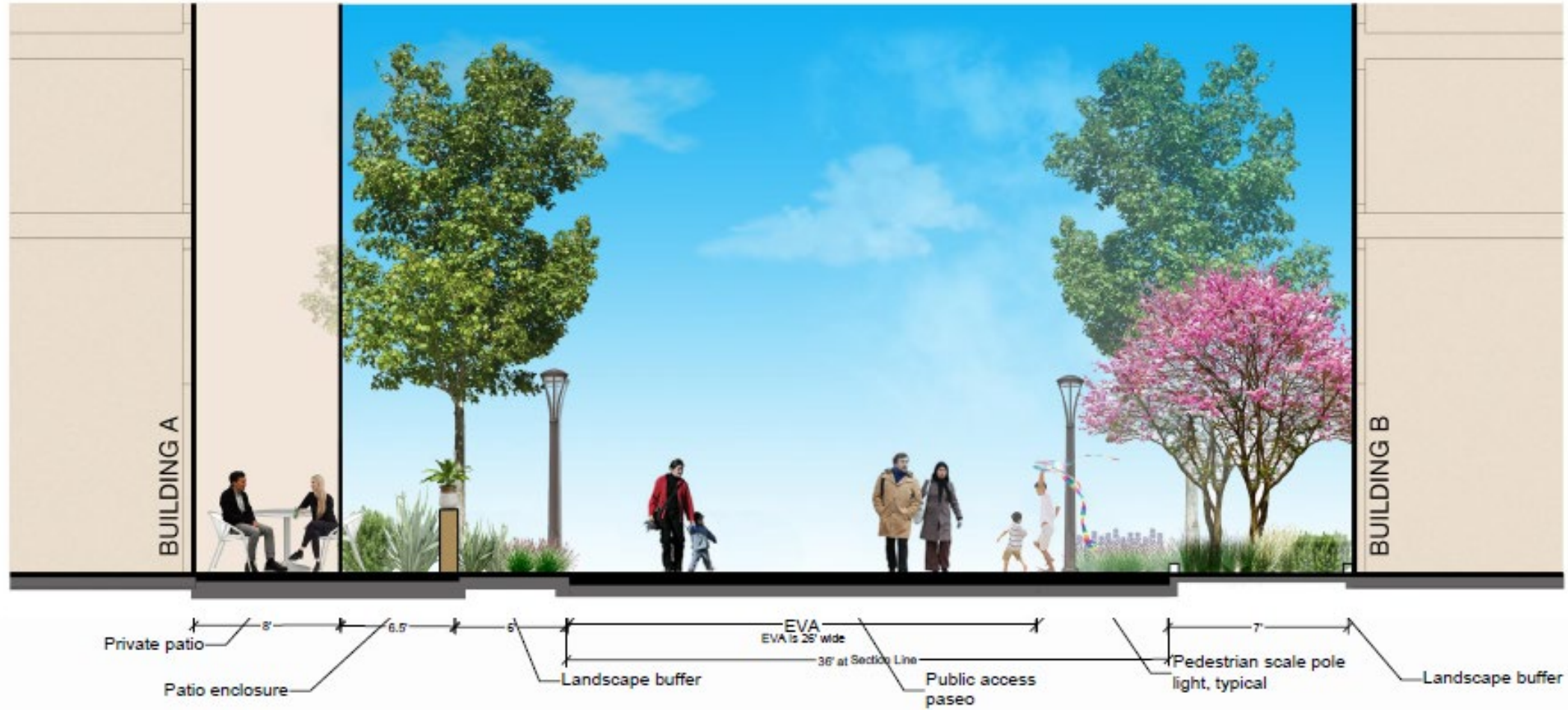


PASEO PLAN





PASEO SECTION





PASEO VIEW CORRIDOR 1





PASEO VIEW CORRIDOR 2



SHORELINE INTERPRETIVE SIGNAGE CONCEPT

Locations for Bair Island Story and Interpretive Information in Pavement and/or in Signage

Large Scale Exhibit with Bair Island wildlife



PLANTING DIAGRAM



AREA 1

BAYSHORE NATIVE PLANTING

A combination of mostly native and some adapted low water use plantings. Plants tolerant of near-Bay conditions and consist of a variety of low and mid-height grasses, scattered shrubs, and native groundcover. Trees will be few only at parking areas and will be wind and salt tolerant.

Planting is intended to both improve habitat and restore lost habitat from development and urbanization. Invasive plants are not included as they can choke native species and may be detrimental to wildlife. Planting will be designed in large masses to improve habitat benefits and planted buffers will separate people from critical wildlife habitat. Management will be carried out in a way that minimizes disturbance to wildlife. For example, grasses will not be mowed in order to encourage nesting birds and their young to inhabit the area. Plantings will serve the needs of particular wildlife in the area by species selection and maintenance practices.

Shoreline appearance will be enhanced to beautify the landscape and improve the visual experience for visitors. Low plantings will help preserve views to Bair Island and beyond as well as reinforce a sense of place that help identify the San Francisco Bay Area shoreline.



AREA 3

LAWN

An active use lawn along the Community Trail will consist of fescue sod to allow for informal uses such as sitting, yoga, informal ball playing. A lawn adjacent to the Villasport Play Area will consist of artificial turf.



AREA 2

PROMENADE PLANTING

An alley of accent trees will dominate the paseos and specimen palms will frame the Community Trail, helping to lead pedestrians to the new recreational area. Attractive hedges will help to delineate the public/private interface.

A variety of shrubs, flowering perennials, and grasses will define the pathways and the active use areas. The planting will be a vibrant mixture of native, and adapted species.





PLANTING IMAGERY



Trachycarpus fortunei



Quercus virginiana



Laurus nobilis 'Saratoga'



Buxus 'Green Beauty'



Leptospermum 'Snow White'



Arbutus 'Marina'



Podocarpus gracilior



Agonis flexuosa



Calamagrostis 'Stricta'



Phormium 'Sea Jade'



Aeonium decorum



Dietes bicolor



Kniphofia 'Little Maid'



Limonium perezii



Phlomis fruticosa



Senecio mandraliscae



Fragaria chiloensis



Hesperaloe parvifolia



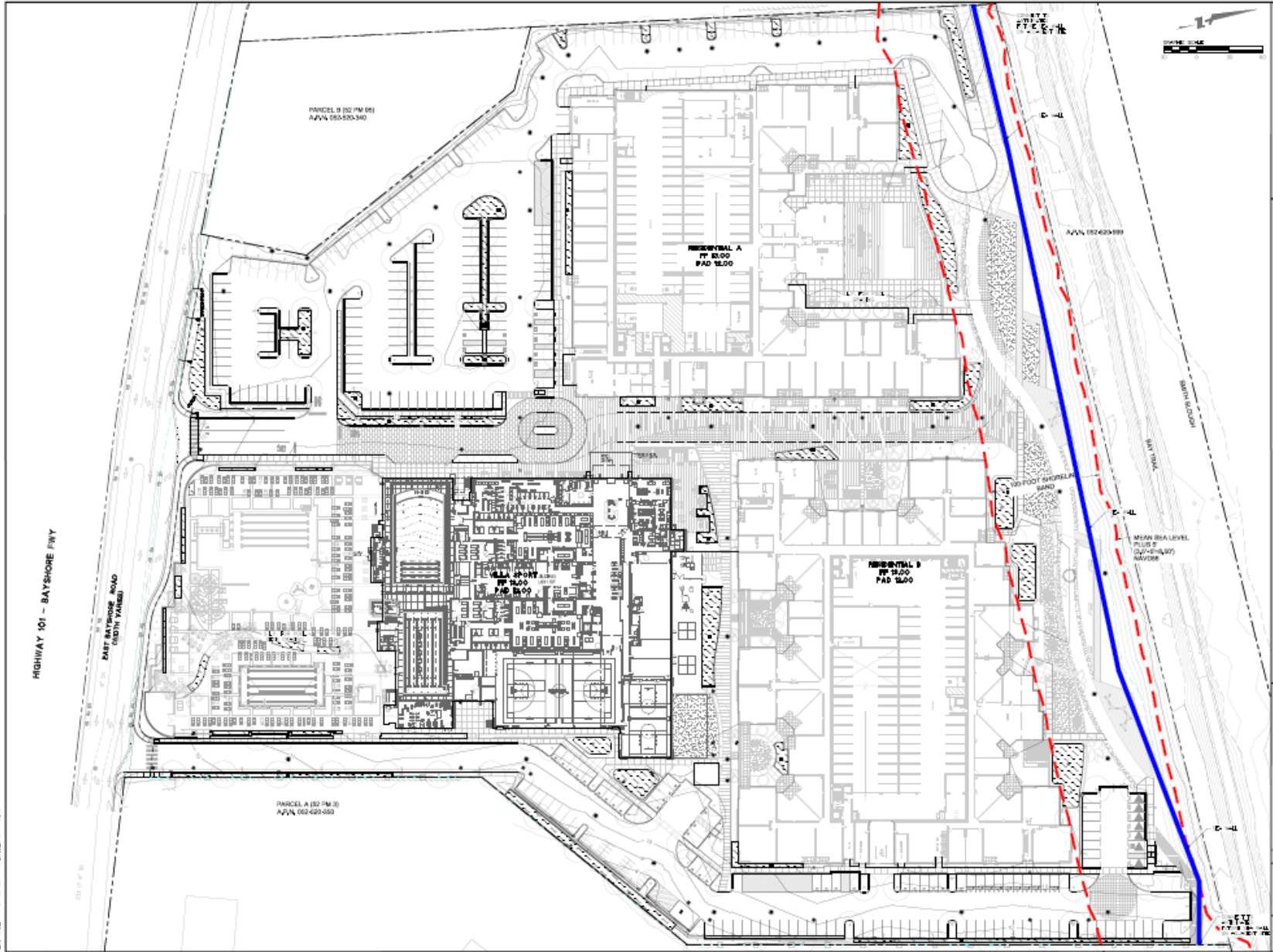
Bougainvillea 'Barbara Karst'



SHORELINE VIEW 1



SEA WALL EXHIBIT





PASEO VIEW CORRIDOR 1





PASEO VIEW CORRIDOR 2





VIEW OF BUILDING A ALONG SHORELINE OPEN SPACE





SHORELINE VIEW 2





SHORELINE VIEW 1





VIEW OF BUILDING B ALONG SHORELINE OPEN SPACE

